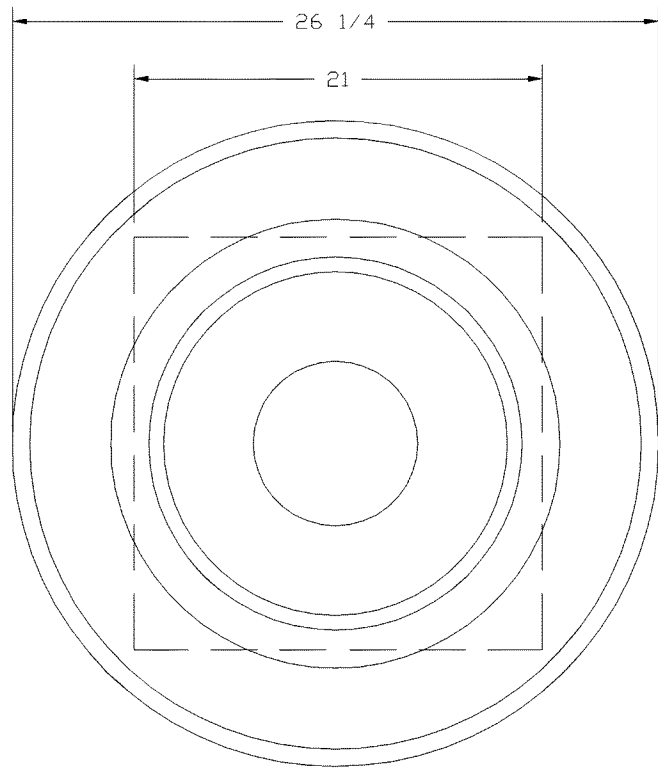
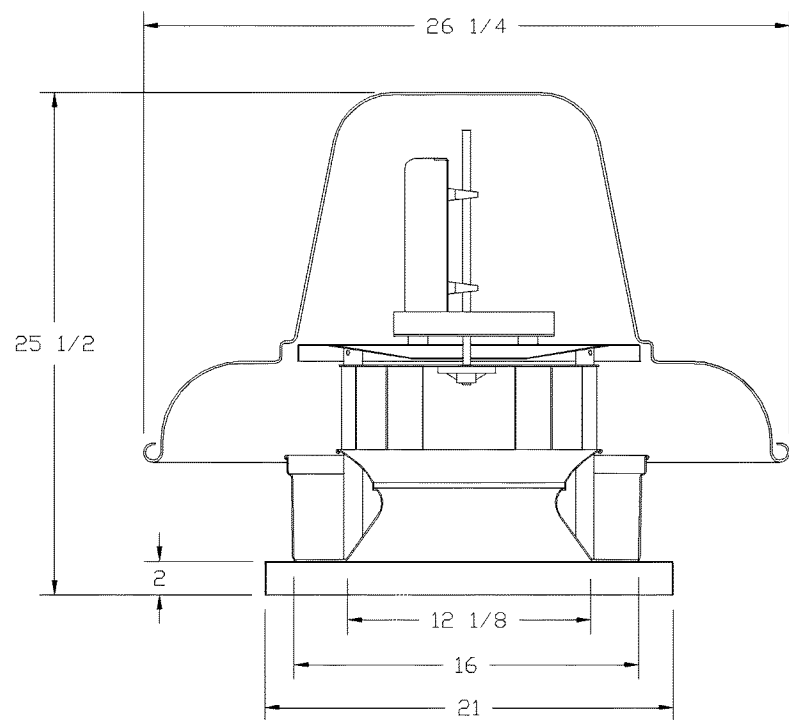


FAN #3 FARDCR7 - EXHAUST FAN



TOP VIEW

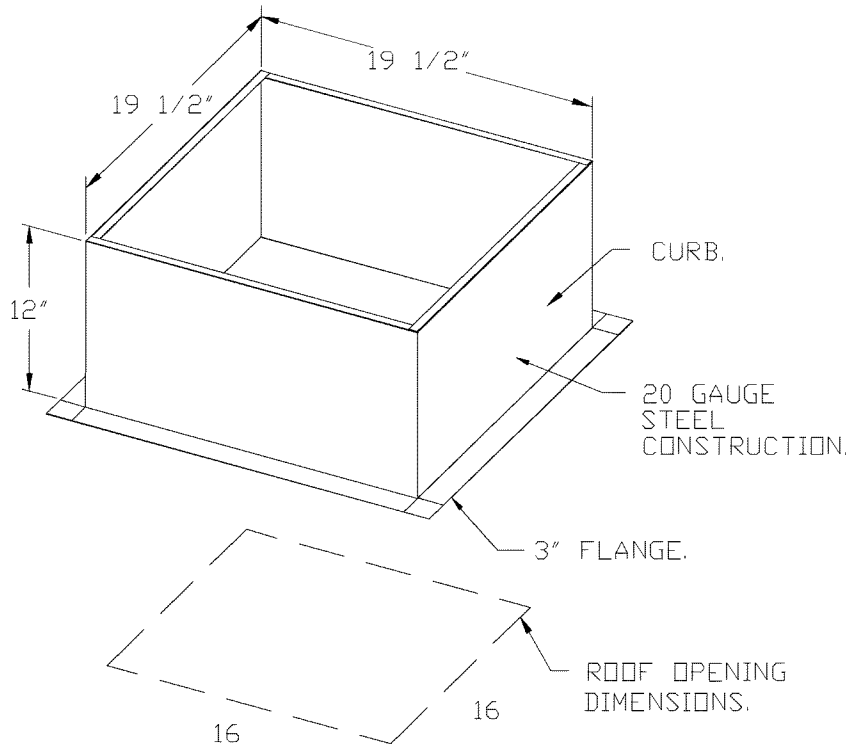


FEATURES:

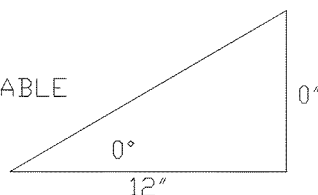
- ROOF MOUNTED FANS.
- UL705.
- AMCA SOUND AND AIR CERTIFIED.
- WIRING FROM MOTOR TO DISCONNECT SWITCH.
- DISCONNECT SWITCH.
- STANDARD BIRD SCREEN.

OPTIONS

- 1 15" BDD DAMPER.
- 2 YEAR PARTS WARRANTY.

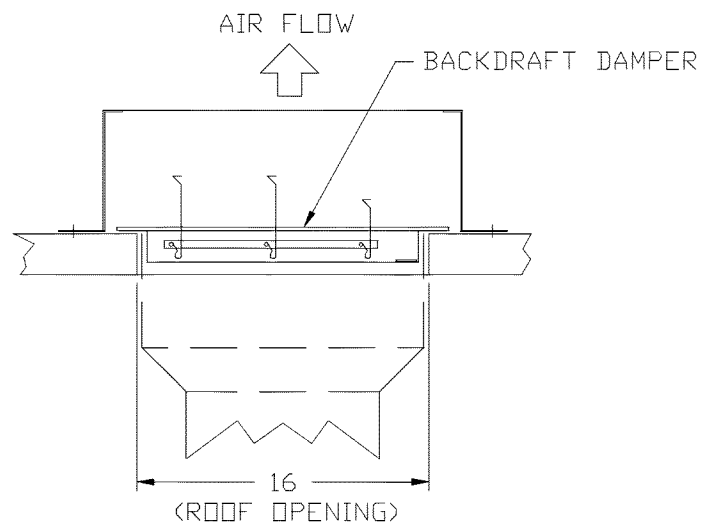


PITCHED CURBS ARE AVAILABLE FOR PITCHED ROOFS.



SPECIFY PITCH:  
EXAMPLE: 7/12 PITCH = 30° SLOPE.

BACKDRAFT DAMPER INSTALLATION



NOTE: UNLESS OTHERWISE STATED, PANDA RESTAURANT GROUP SHALL PROVIDE ALL EQUIPMENT ON THE FOLLOWING CAPTIVEAIRE SHEETS, INCLUDING: HOODS, FIRE SYTEM, EXHAUST FANS, SUPPLY FAN, BATHROOM FAN AND ELECTRICAL INTERLOCK PACKAGE

DOUBLE WALL DUCT BY MECHANICAL PLEASE USE CONTACT BELOW FOR PRICING

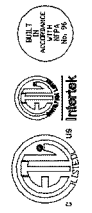
ANSUL GAS VALVE:

THE ANSUL GAS VALVE IS PROVIDED BY CAPTIVEAIRE SYSTEMS. CONTACT OUR OFFICE WITH THE VALVE SIZE 3 DAYS IN ADVANCE OF WHEN IT IS NEEDED ON SITE.

FOR QUESTIONS CALL THE CAPTIVEAIRE SOUTHERN CALIFORNIA OFFICE

3002 DOW AVENUE, SUITE 410  
TUSTIN, CA 92780  
TEL: 714-957-1500 EMAIL: REG086@CAPTIVEAIRE.COM

REVISIONS	
DESCRIPTION	DATE



**CAPTIVEAIRE**

Southern California Office

3002 Dow Ave., Suite 410, Tustin, CA 92780 PHONE: (714) 957-1500 FAX: (919) 227-5975 EMAIL: reg086@captiveaire.com

PX - 2316 - ACPSP - HEAT DX - EXTREME COLD - R2

DATE: 2/25/2021

DWG. #:  
4438143

DRAWN BY: AH-86

SCALE:  
3/4" = 1'-0"

MASTER DRAWING

SHEET NO.  
5



PANDA EXPRESS, INC.  
1683 Walnut Grove Ave.  
Rosemead, California  
91770

Telephone: 626.799.9898  
Facsimile: 626.372.8288

All ideas, designs, arrangement and plans indicated or represented by this drawing are the property of Panda Express Inc. and were created for use on this specific project. None of these ideas, designs, arrangements or plans may be used by or disclosed to any person, firm, or corporation without the written permission of Panda Express Inc.

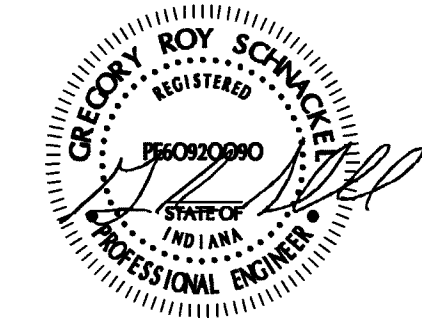
REVISIONS:

ISSUE DATE:

04/27/21 WALMART REVIEW  
05/05/21 ISSUE FOR PERMIT

DRAWN BY:

PANDA PROJECT #: S8-22-D8044  
PANDA STORE #: D8044  
ARCH PROJECT #: Q511070001



**Schnackel**  
engineers  
New York • Omaha • Los Angeles • Seattle • Honolulu  
800-581-0963 www.schnackel.com  
SEE JOB SPECIFICATIONS

PANDA EXPRESS

TRUE WARM & WELCOME  
STATE ST. & NEW RD.  
GREENFIELD, IN 46140

M-404

HOOD DETAIL PLAN

TRUE WARM & WELCOME 2300 R5