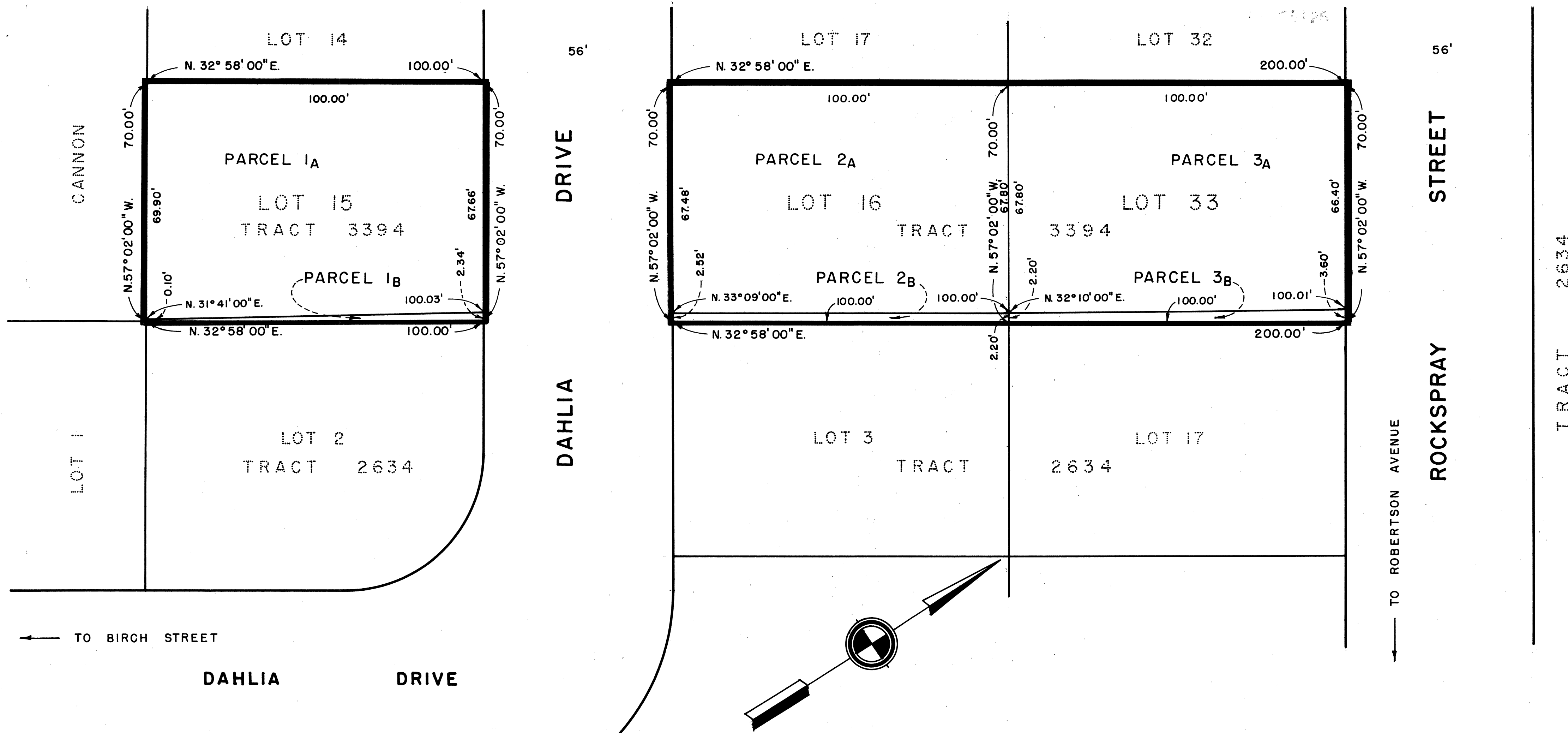


79/24



BASIS OF BEARINGS
The bearing N. 57°02'00" W. along the centerline of Birch Street as shown on Tract 2634 filed July 3, 1969 in Book 62 at Page 54 and 55, Alameda County Records, was taken as the basis of bearings for this map.

SURVEYOR'S CERTIFICATE
This map was prepared by me or under my direction and was compiled from record data in conformance with the requirements of the Subdivision Map Act at the request of Mulberry Homes Company in February, 1973. I hereby certify that all provisions of applicable State law and local ordinances have been complied with.
Leroy Martin
LEROY MARTIN, P.E.
R.C.E. No. 7996

CITY ENGINEER'S CERTIFICATE
This map has been examined this 16TH day of MARCH, 1973 for conformance with the requirements of Section 11575 of the Subdivision Map Act.
Paul H.B. Tong
PAUL H.B. TONG
R.C.E. No. 13052

RECORDER'S CERTIFICATE
Filed this 20TH day of MARCH, 1973, at 3:20 P.M. in Book 79 of Parcel Maps at Page 24 at the request of Mulberry Homes Company.
\$1500
#73-36126
JACK G. BLUE
County Recorder
By *James Campbell*
Deputy County Recorder

PARCEL MAP NO. 1103

FOR MULBERRY HOMES COMPANY

LOTS 15, 16 AND 33 OF TRACT 3394, FILED AUGUST 2, 1972 IN BOOK 75 OF MAPS AT PAGES 47 TO 50 INC., 72-105199, ALAMEDA COUNTY RECORDS
IN THE CITY OF NEWARK, ALAMEDA COUNTY, CALIFORNIA

AAA ENGINEERING COMPANY
LEROY MARTIN P.E. CONSULTING CIVIL ENGINEER
HAYWARD, CALIFORNIA

SCALE: 1" = 20'

FEBRUARY, 1973

PM 1103

SHEET 1 OF 1 SHEET

Map BK 79 Pg 24

#73-36126