

Witold

LUTOSŁAWSKI

LACRIMOSA

na sopran, chór i orkiestrę

partytura

for soprano, choir and orchestra

score

ORCHESTRA

2 flauti (fl.)
2 oboi (ob.)
corno inglese (cor. i.)
2 clarinetti in si \flat (cl.)
2 fagotti (fg.)
contrafagotto (cfg.)

3 trombe in do (trbe)
4 corni in fa (cor.)
trombone (trbne)
tuba

timpani (timp.)

soprano solo (sopr. solo)

coro: soprani (S.)
alti (A.)
tenori (T.)
bassi (B.)

violini I (vni I)
violini II (vni II)
violetti (vle)
violoncelli (vc.)
contrabbassi (cb.)

ca 3'

LACRIMOSA

WITOLD LUTOSŁAWSKI (1937)

Andante

$\frac{4}{4}$

$\frac{2}{4}$ *rit.*

$\frac{3}{4}$ *a tempo*

sopr.
solo

La -

- cri - mo - sa di-es

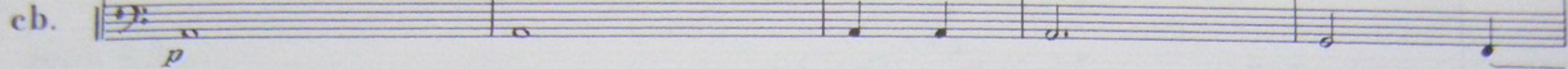
vni

vle

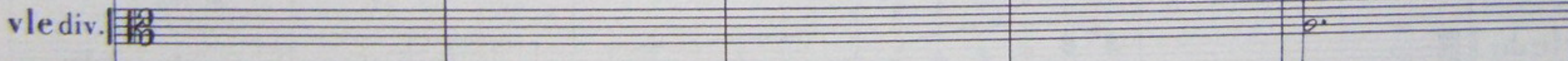
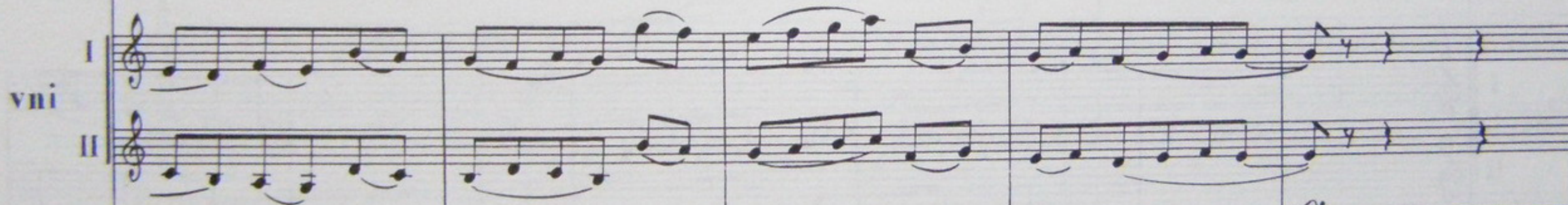
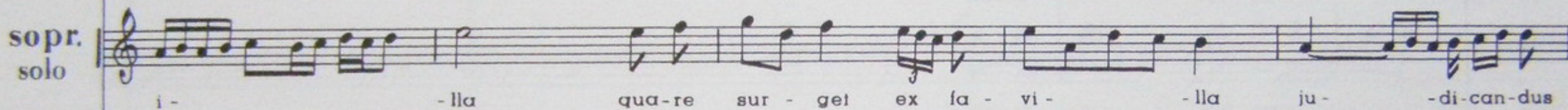
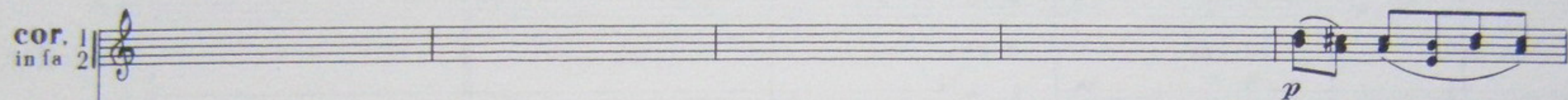
vc.

cb.

p



1



allarg. poco meno mosso

2

fl. 1

ob. 1

cor. i.

cl. 1
insp. 2

fg. 1
2

c. fg.

trbe 1
indo 2

cor. in fa

sopr. solo

S.

A.

ORO

T.

B.

vni I

vni II

vle div.

vc.

cb.

poco f

mf

mf cresc.

mf cresc.

cresc.

c. sord.

pp bouché

p bouché

mf

f

Hu - ic e - rgo pa - - rce, De -

Hu - ic e - rgo pa - - rce, De -

Hu - ic e - rgo pa - - rce, De -

Hu - ic e - rgo pa - - rce, De -

Hu - ic e - rgo pa - - rce, De -

Hu - ic e - rgo pa - - rce, De -

mf

mf

cresc.

cresc.

f

* Wewnątrz nawiasu | gra się tylko w razie wykonania bez chóru.

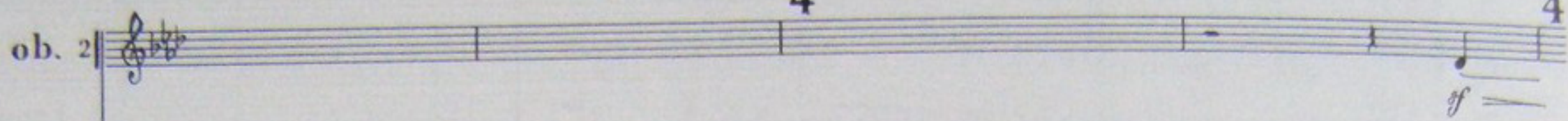
One plays the part within the brackets | only when the choir does not take part in the performance.

Tempo I

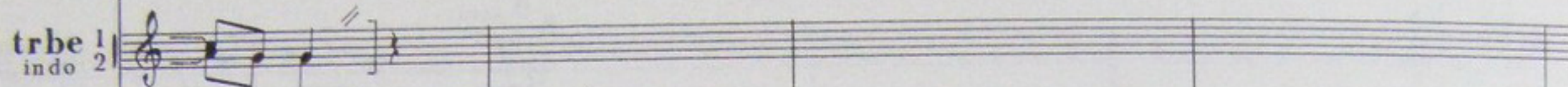
4
4

3
4

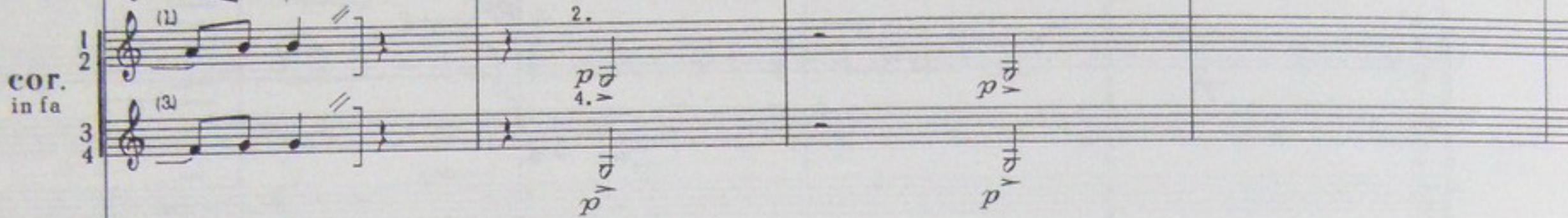
ob. 2



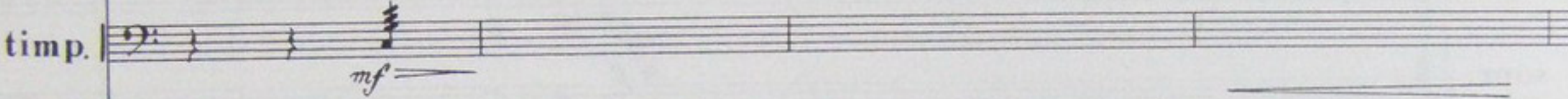
trbe 1
indo 2



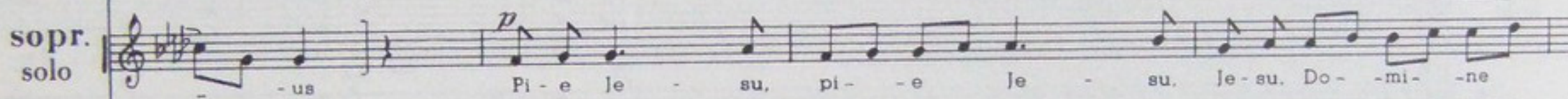
cor. in fa



timp.



sopr. solo



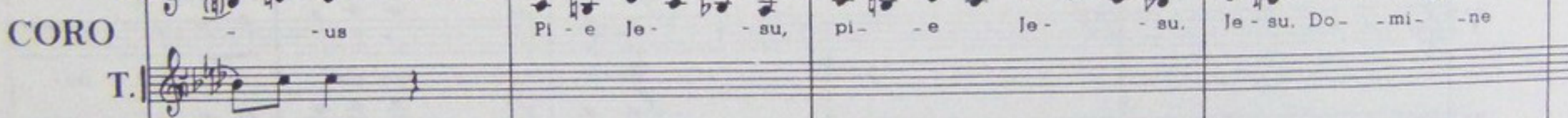
S.



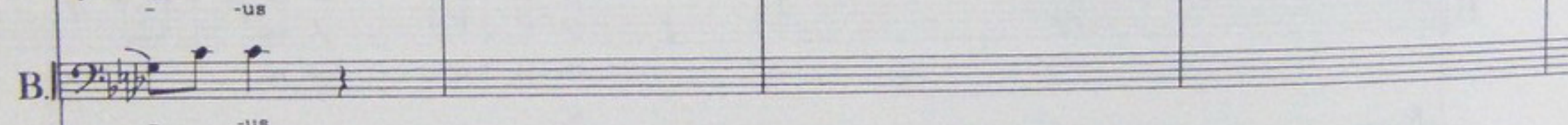
A.



CORO
T.



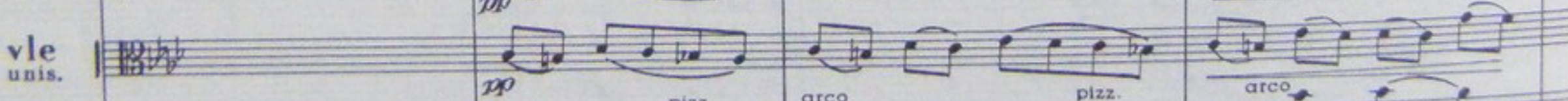
B.



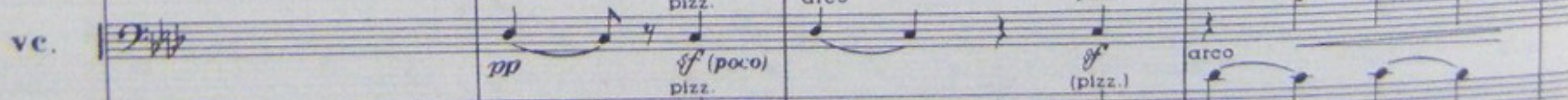
vni I
II



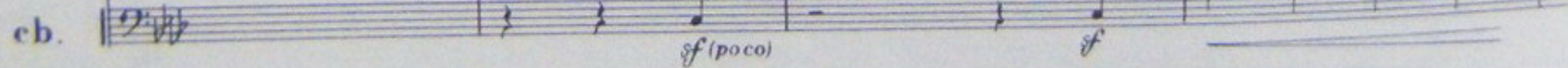
vle unis.



vc.



cb.



fl. 1/2

ob. 1/2

cor. i.

cl. 1/2
insib

fig. 1.2

cfig.

cor. in fa

trbne

p

cresc.

mf

mf

p

cresc.

mf

p

cresc.

mf

sopr. solo

S.

A.

T.

B.

CORO

p

cresc.

do - na e - is, do - na e - is, do - na e - is, do - na e - is

p

cresc.

do - na e - is, do - na e - is, do - na e - is, do - na e - is

p

cresc.

do - na e - is, do - na e - is, do - na e - is, do - na e - is

p

cresc.

do - na e - is, do - na e - is, do - na e - is, do - na e - is

p

cresc.

do - na, do - na e - is, do - na e - is, do - na e - is

vni I

vni II

vle

ve.

cb.

p

cresc.

p

cresc.

p

cresc.

pizz.

arco

pizz.

arco

pizz.

arco

cresc.

fl. 1/2

ob. 1/2

cor. i.

cl. 1/2
insib

fg. 1/2

cflg.

trbe 1/2
indo

cor. 1/2
in fa

trbne

tuba

timp.

sopr. solo

S.

A.

T.

B.

CORO

vni I

vni II

vle

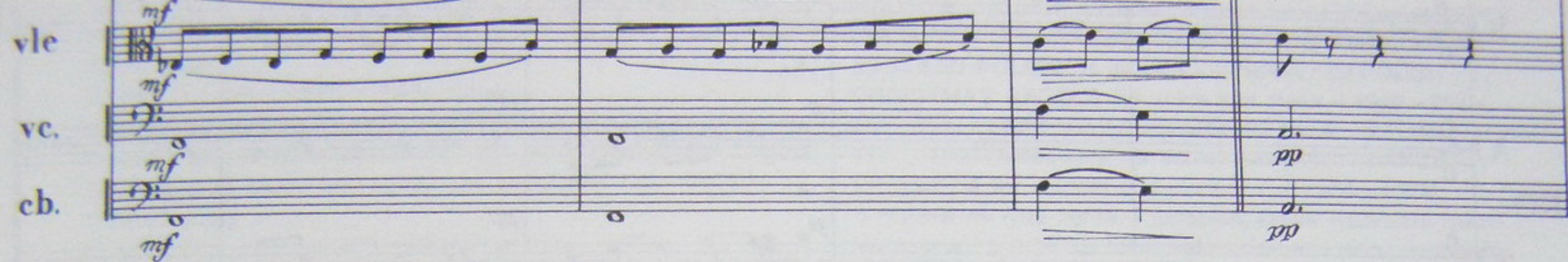
vc.

cb.

re - qui - em, re - qui - em, re - qui - em, re - qui - em

4

Score for Violin (vle), Viola (vc), and Cello (cb). The music is in 4/4 time and features a melodic line in the violin and a supporting bass line in the viola and cello. The dynamic markings are *mf* (mezzo-forte) and *pp* (pianissimo).



Score for Flute (fl.), Clarinet in B-flat (cl. in si b), Violin I (vni I), Violin II (vni II), Viola (vle), Viola (vc), and Cello (cb). The music is in 4/4 time and features a complex melodic line in the flute and clarinet, and a supporting bass line in the violins, viola, and cello. The dynamic marking is *pp* (pianissimo).

5



poco meno mosso

