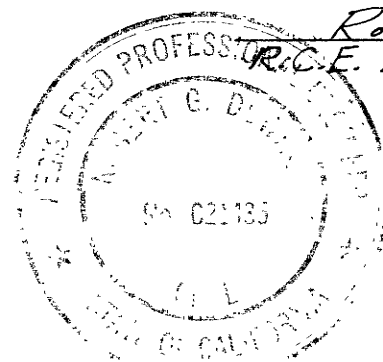


# SURVEYOR'S CERTIFICATE:

This map was prepared by me and is based upon a field survey in conformance with the requirements of the Subdivision Map Act at the request of Nelson Sciarani on Sept. 1974. I hereby certify that it conforms to the approved tentative map and the conditions of approval thereof.



## COUNTY SURVEYOR'S CERTIFICATE

This map conforms with the requirements of the Subdivision Map Act and local ordinances.

Dated: July 23rd 1979

Signed: *Robert M. Downer*  
Mono County Surveyor

(Chichester deed filed Oct. 14, 1940  
BK. 16 PG. 390)

## PLANNING COMMISSION CERTIFICATE

I hereby certify that this Land Division Map was approved by Mono County Planning Commission on 12th day of July 1979.

*Richard W. Stebbins*  
Planning Commission Chairman

There are no liens of any kind against this property, or any part thereof, for delinquent county, municipal or local taxes or special assessments.

*Shirley C. Berman*  
Tax Collector

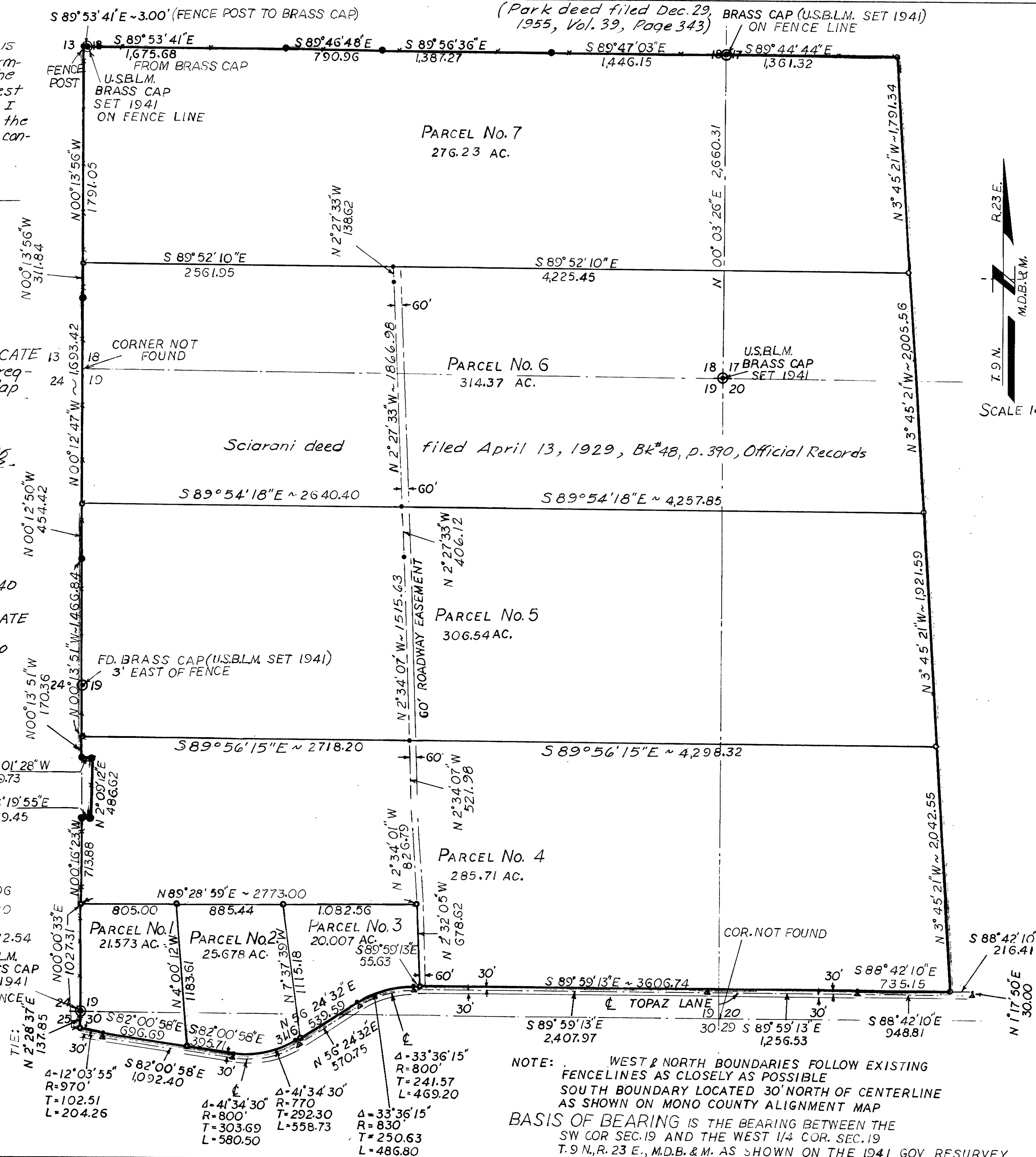
DISTANCE BETWEEN BRASS CAPS

24|19 TO 24|19 N00°14'W 2660.06  
REC. N00°14'W ~ 2,659.80

24|19 TO 13|18 N00°13'W ~ 5322.54

13|18 TO 18|17 S89°31'56"E 5300.05  
U.S.B.L.M. BRASS CAP SET 1941

6'E OF FENCE LINE



## OWNERS' CERTIFICATE:

We hereby certify that we are the sole owners of the real property included within the seven parcels shown on this map and that we are the only persons whose consent is necessary to pass a clear title to said property and we consent to the preparation and recordation of said map, and dedicate for public use the roadway easement shown between Topaz Lane and Parcel 7.

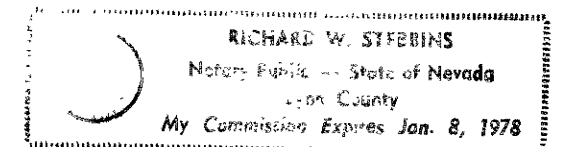
*Nelson Sciarani* *Arnold Sciarani Jr.*  
Nelson Sciarani Arnold Sciarani Jr.  
*John Sciarani* *Eugo Sciarani*  
John Sciarani Eugo Sciarani

State of Nevada ss  
County of Lyon ss  
On the 23rd day of July, 1975, before me, a notary public in and for said county and state, appeared Nelson Sciarani, Arnold Sciarani, John Sciarani, & Eugo Sciarani, who signed the above certificate in my presence.

SCALE 1"=600' Subscribed and sworn to before me this 23rd day of July 1975.

*Richard W. Stebbins*

Notary Public in and for Lyon Co., Nev.  
My commission expires: 8-78



## OFFER OF DEDICATION

I hereby certify that on 23rd day of July, 1979 the Board of Supervisors, Mono County, approved this Parcel Map No. 31-22 and the offer of dedication of the road as shown was rejected.

*Richard W. Stebbins*  
Clerk of Board

- ▲ FOUND 1/2" PIPE IN MONUMENT WELL
- FOUND FENCE POST
- FOUND GOV. BRASS CAP
- SET 1/2" PIPE STAMPED RE 21,435
- ▲ POINT NOT SET

## RECORDER'S CERTIFICATE:

Filed this 26th day of July 1979, at 2:13 PM. in Book 2 of Parcel Map at page 13, at the request of #0569

*Ruby L. Strait*  
County Recorder

PARCEL MAP No. 31-22  
IN THE UNINCORPORATED TERRITORY  
OF MONO COUNTY  
Portions of Sections 17, 18, 19, 20 & 30  
of T. 9 N., R. 23 E., and Sections 13 & 24  
of T. 9 N., R. 22 E., M.D.B. & M.

Scale: 1"=600'

DOWNER ENGINEERING, GARDNERVILLE, NEV.