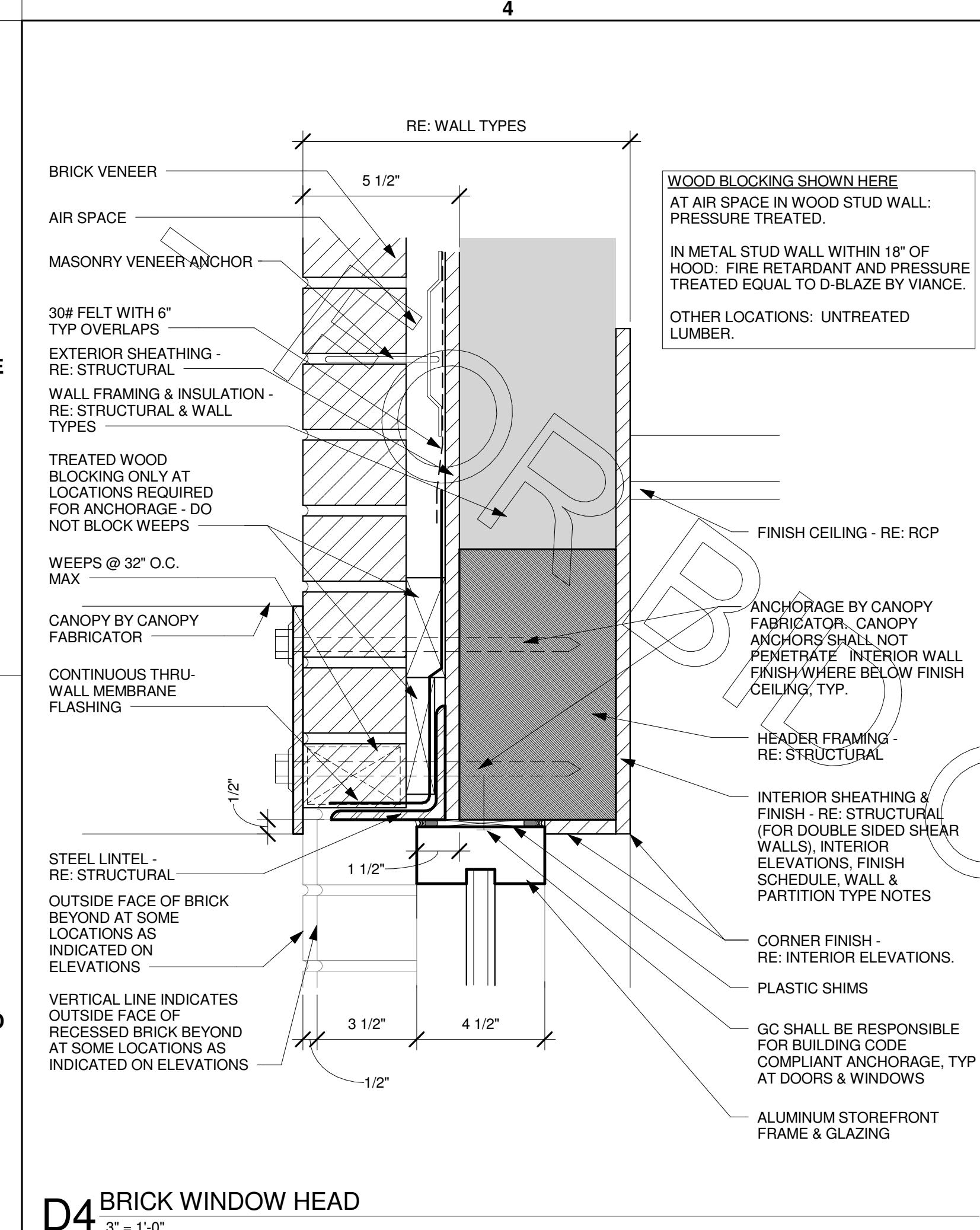
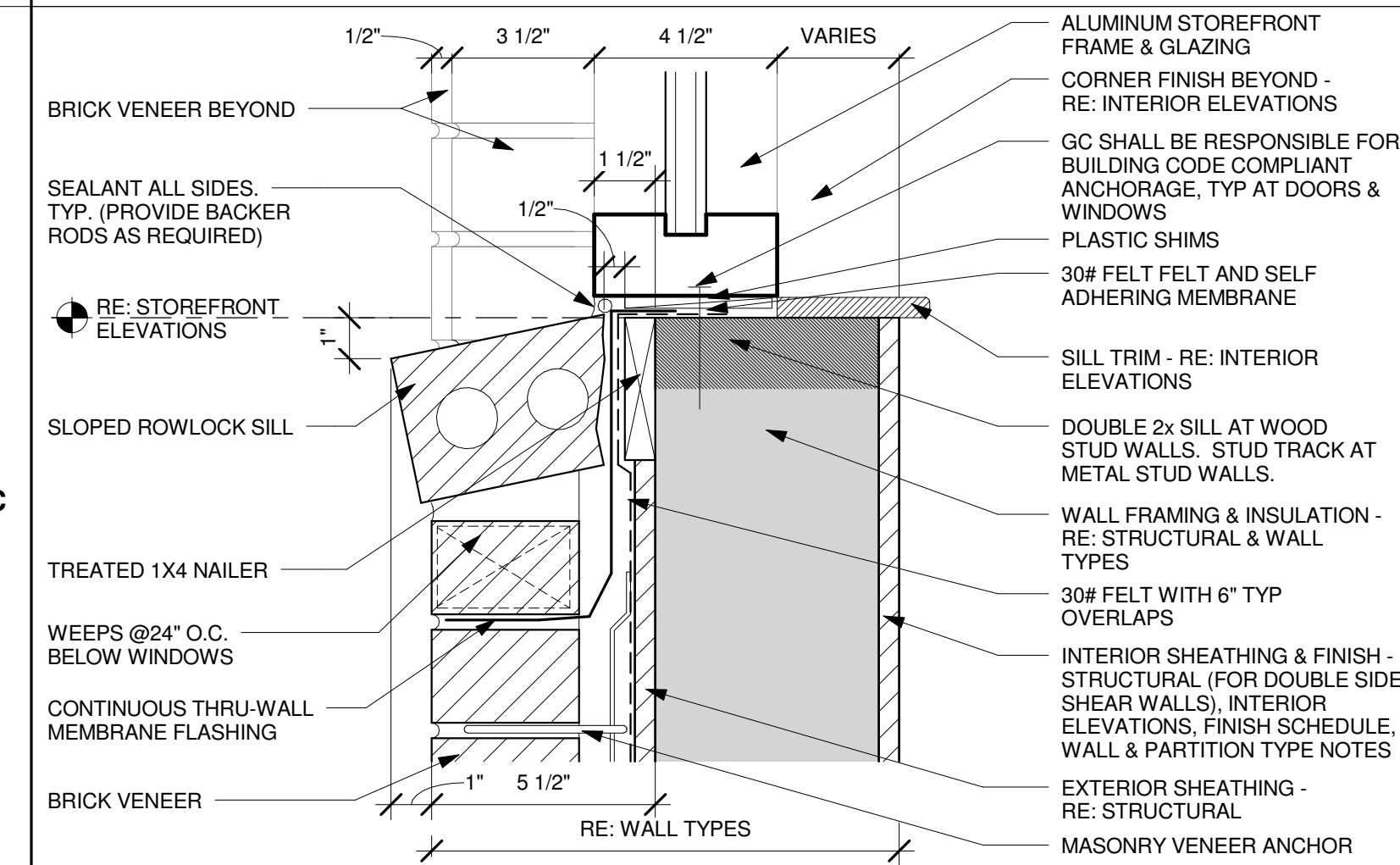


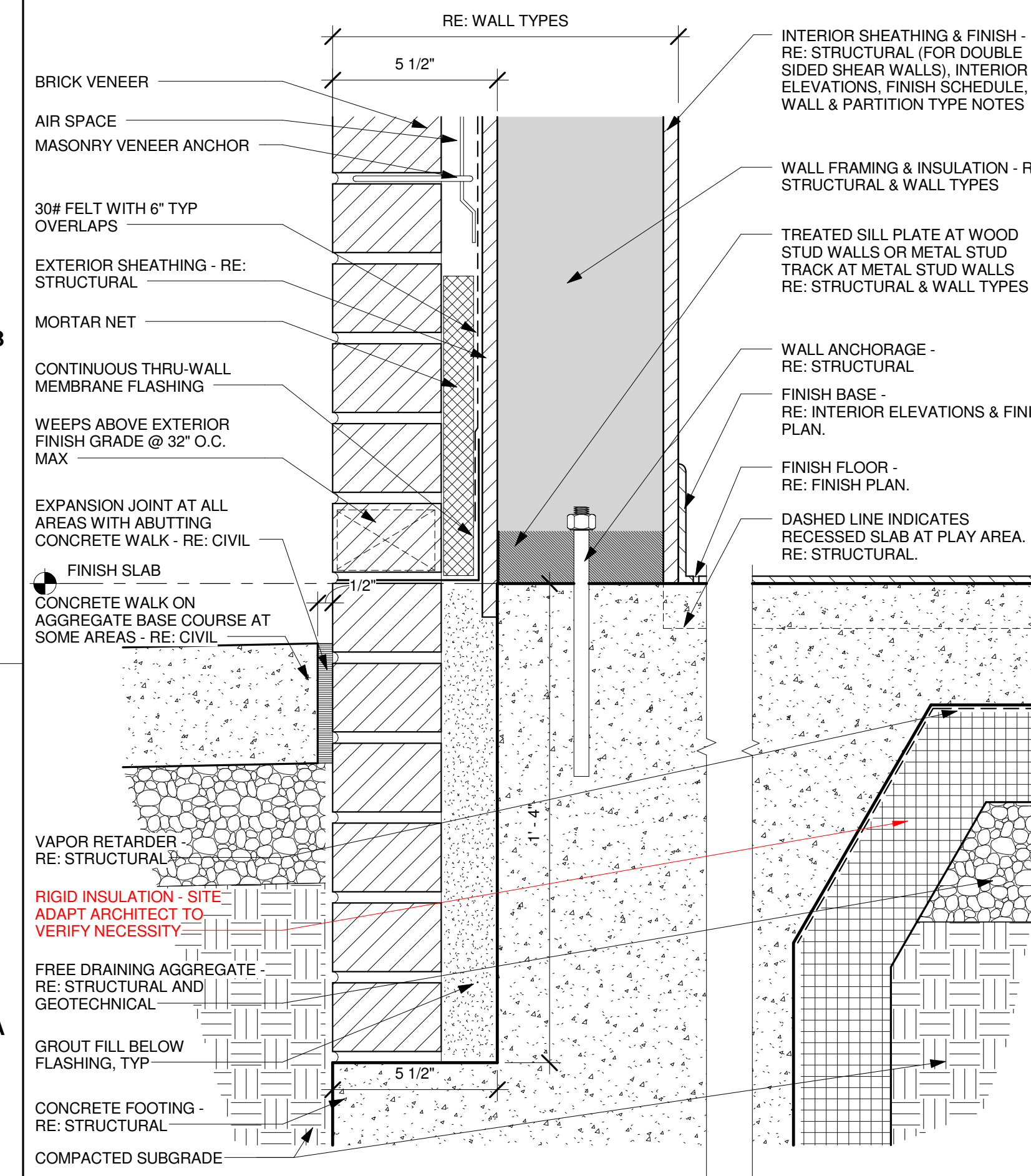
3/12/2018 10:59:42 AM



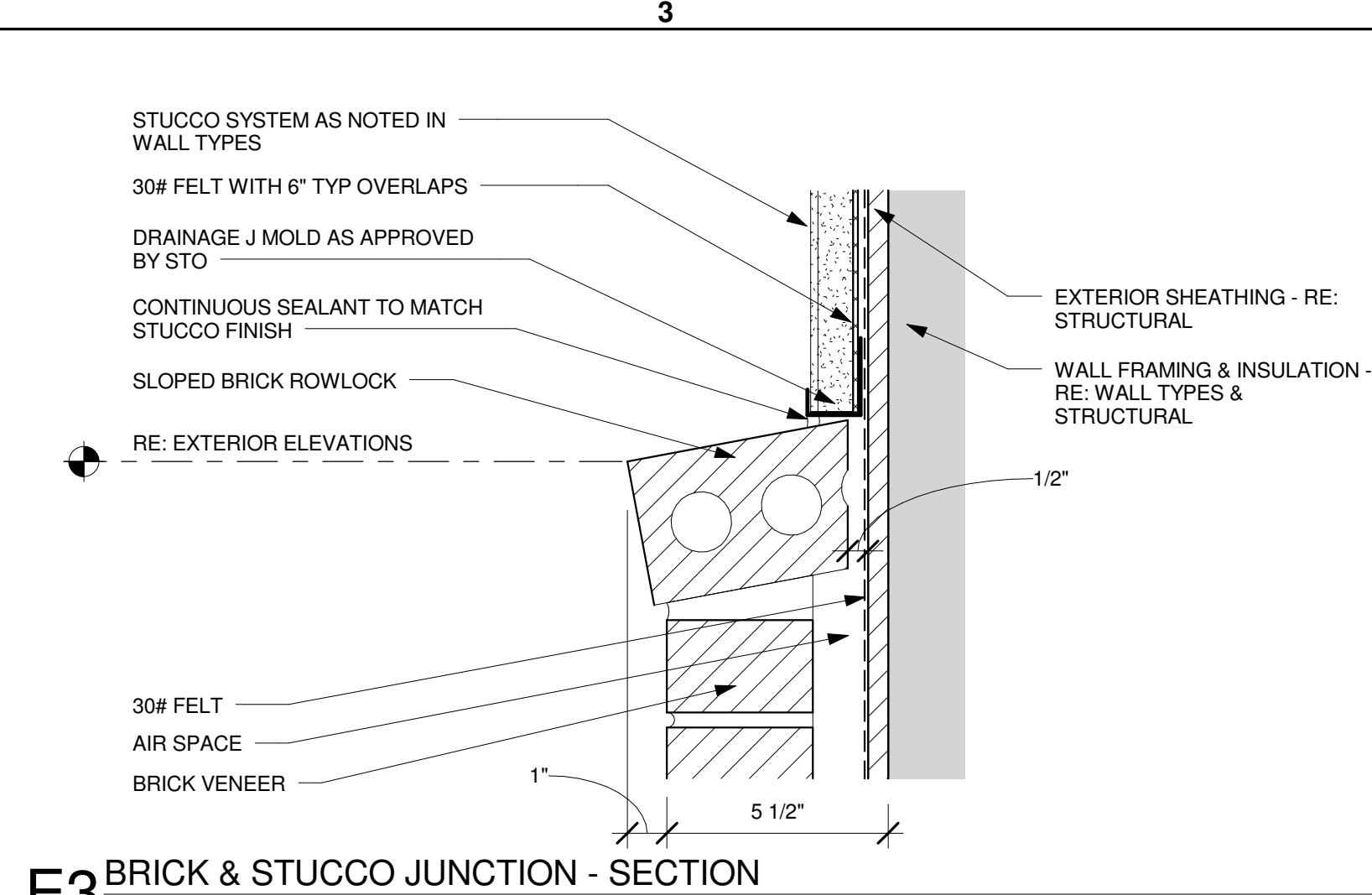
D4 BRICK WINDOW HEAD
3" = 1'-0"



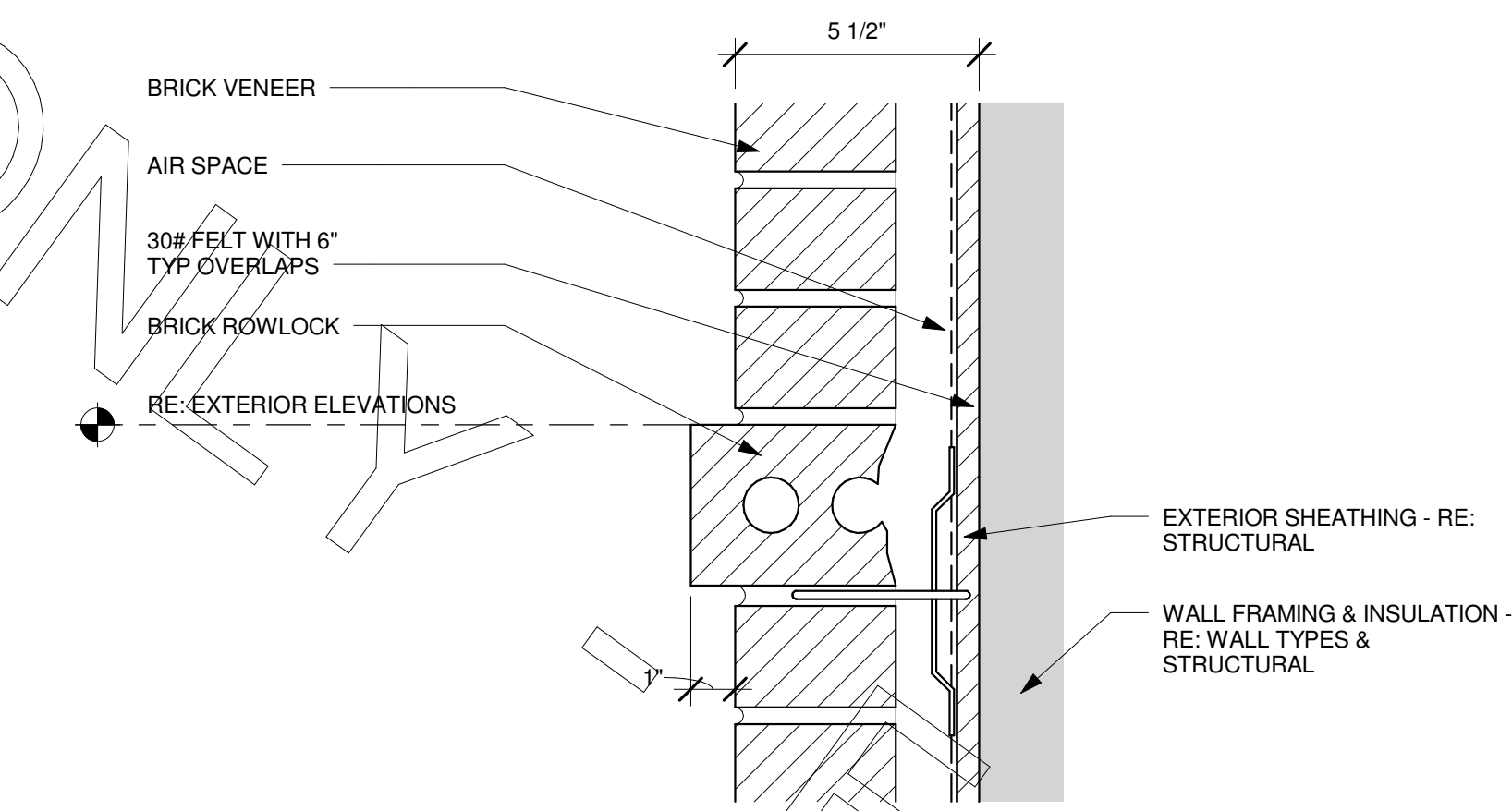
C4 BRICK WINDOW SILL
3" = 1'-0"



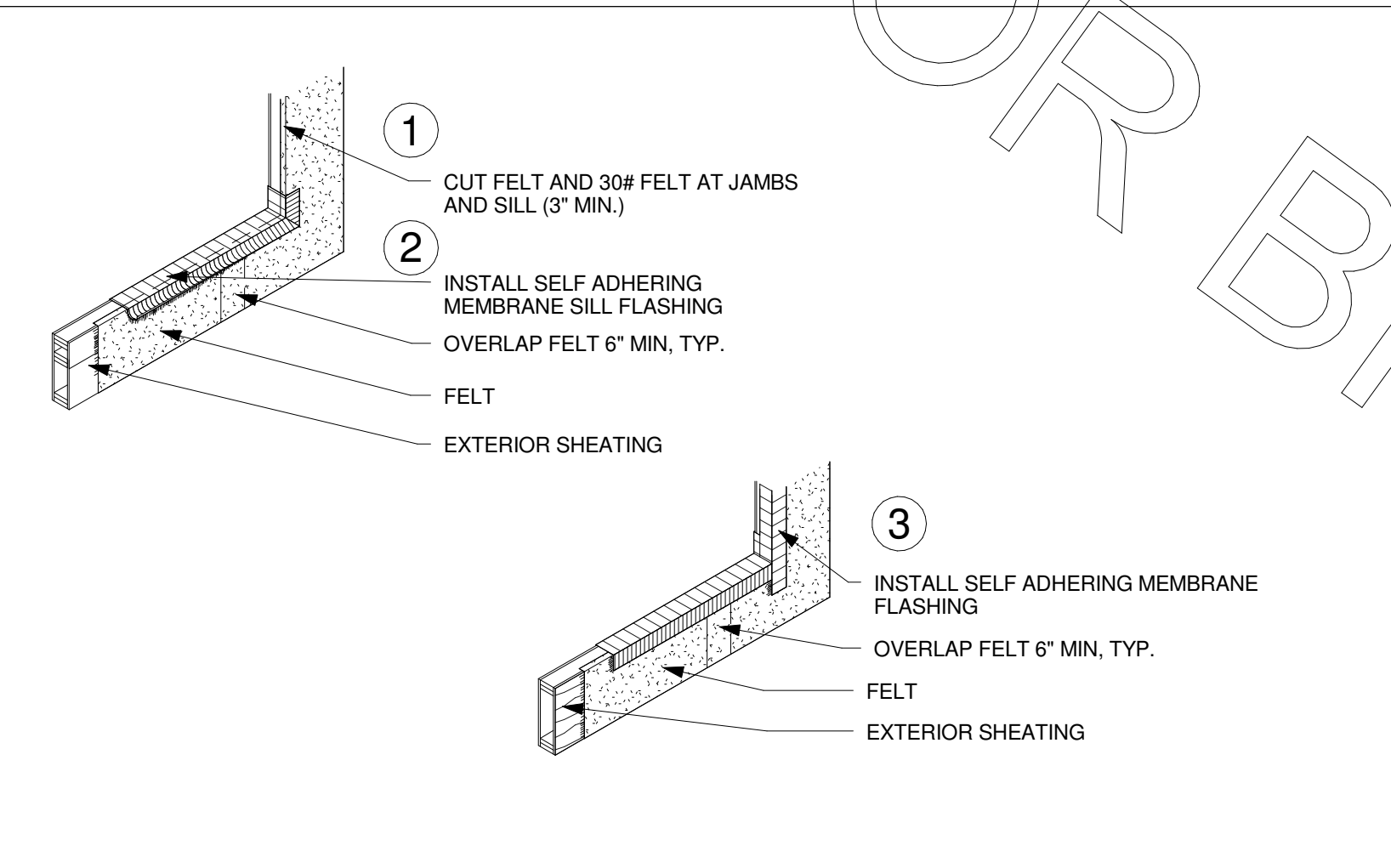
A4 BRICK WALL BASE
3" = 1'-0"



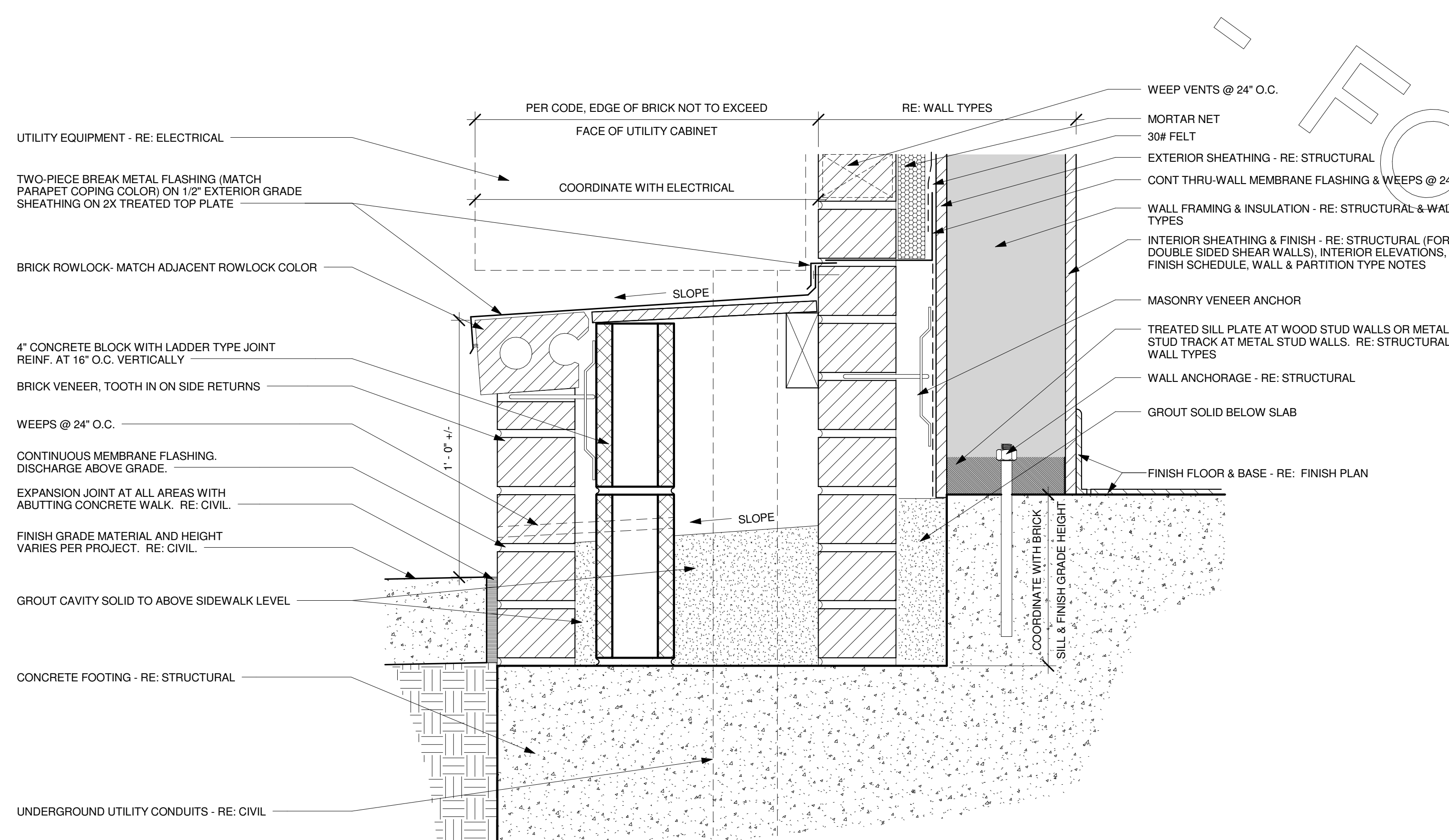
E3 BRICK & STUCCO JUNCTION - SECTION
3" = 1'-0"



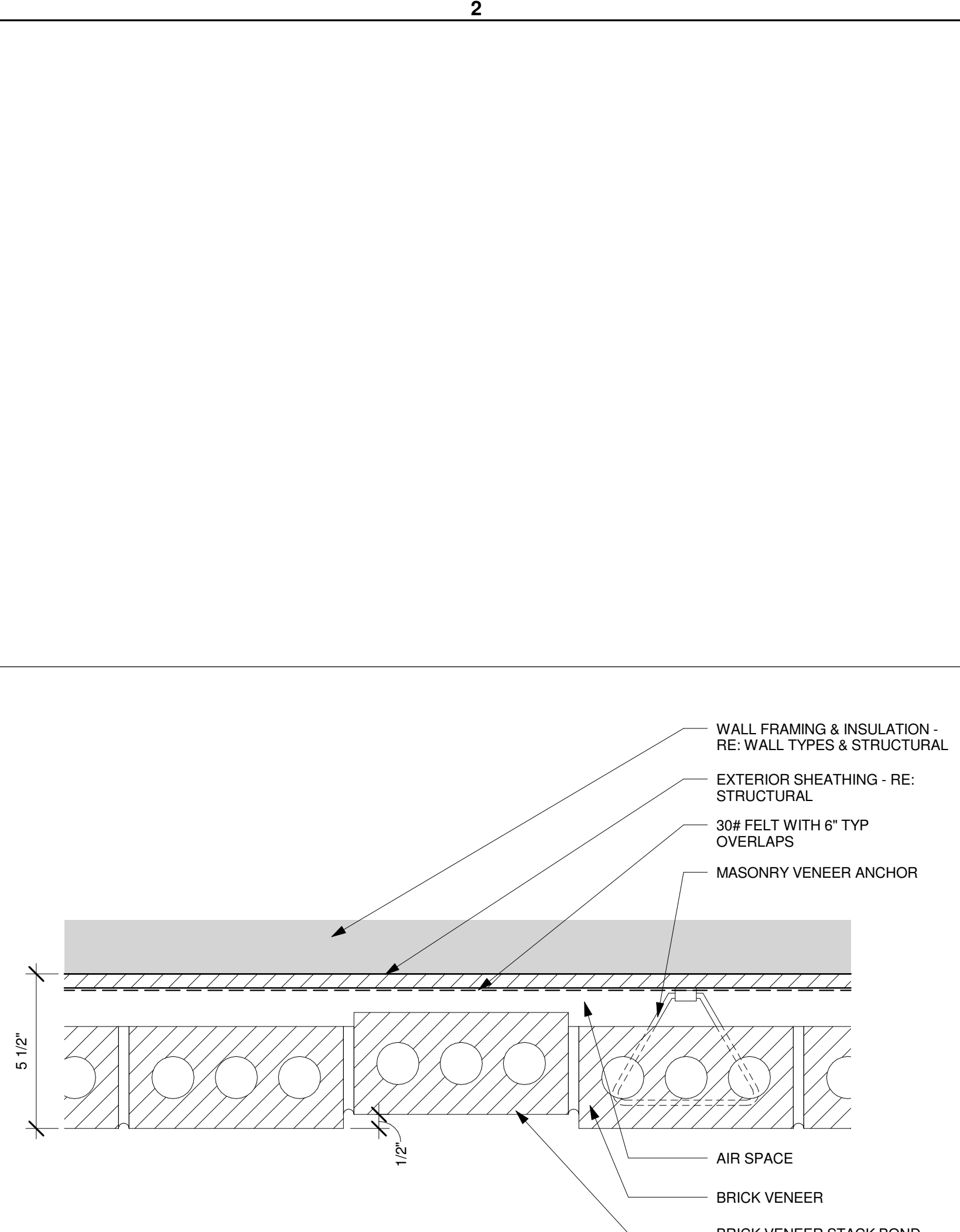
D3 BRICK WALL ROWLOCK SILL
3" = 1'-0"



C3 3-D TYP FLASHING AT BRICK JAMBS & SILL
1/4" = 1'-0"



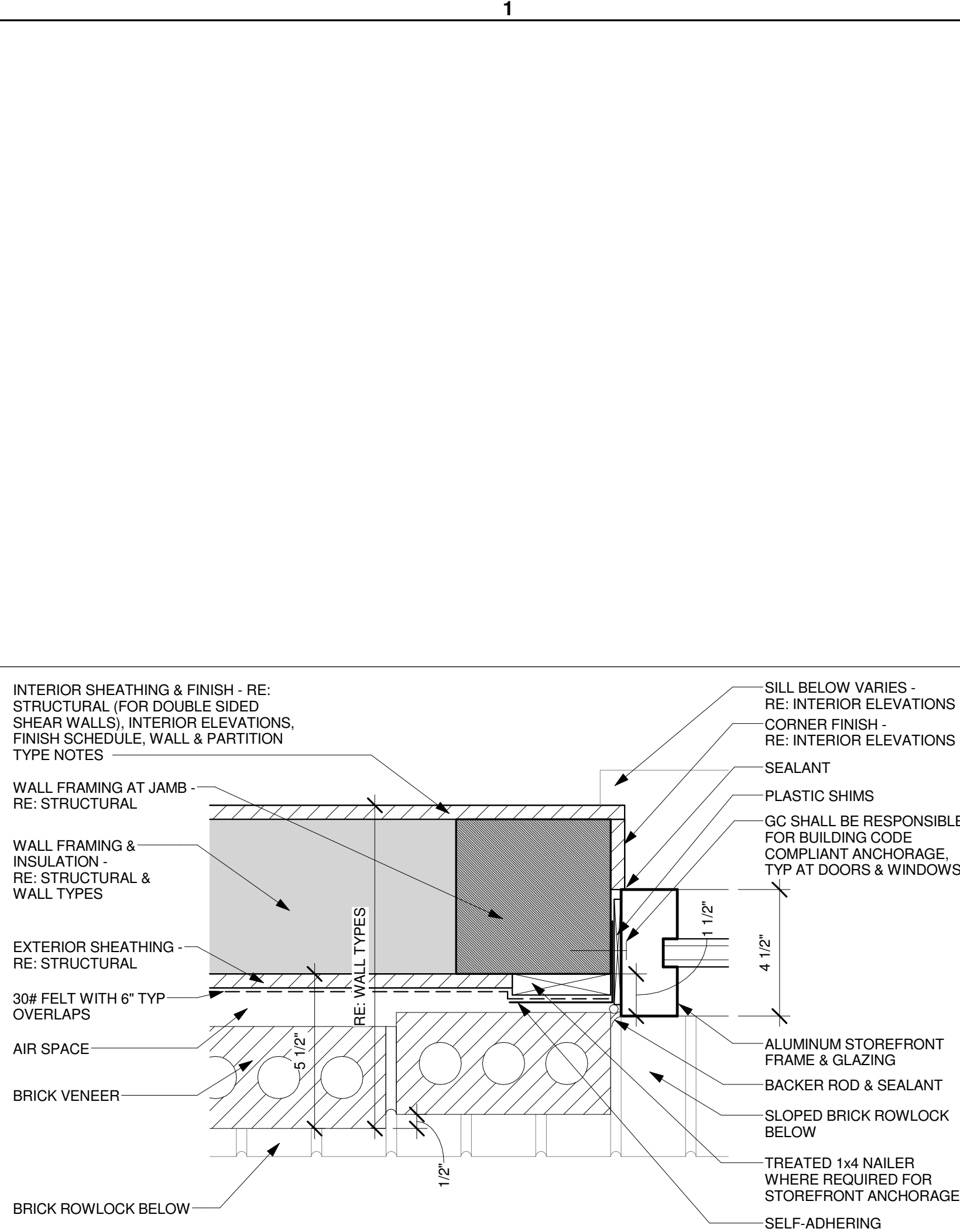
A2 UTILITY KNEE WALL
3" = 1'-0"



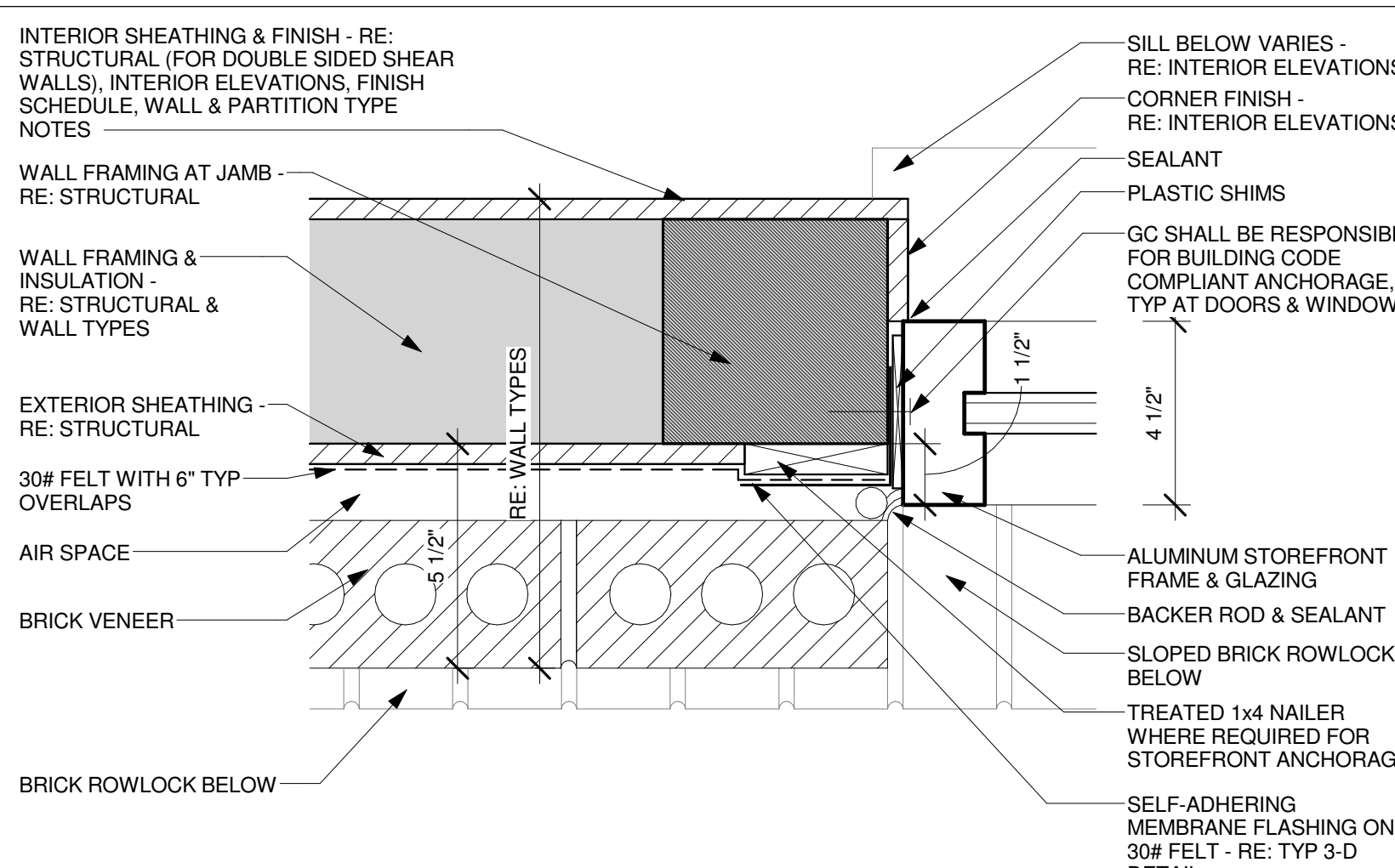
D2 BRICK RECESS PLAN DETAIL
3" = 1'-0"



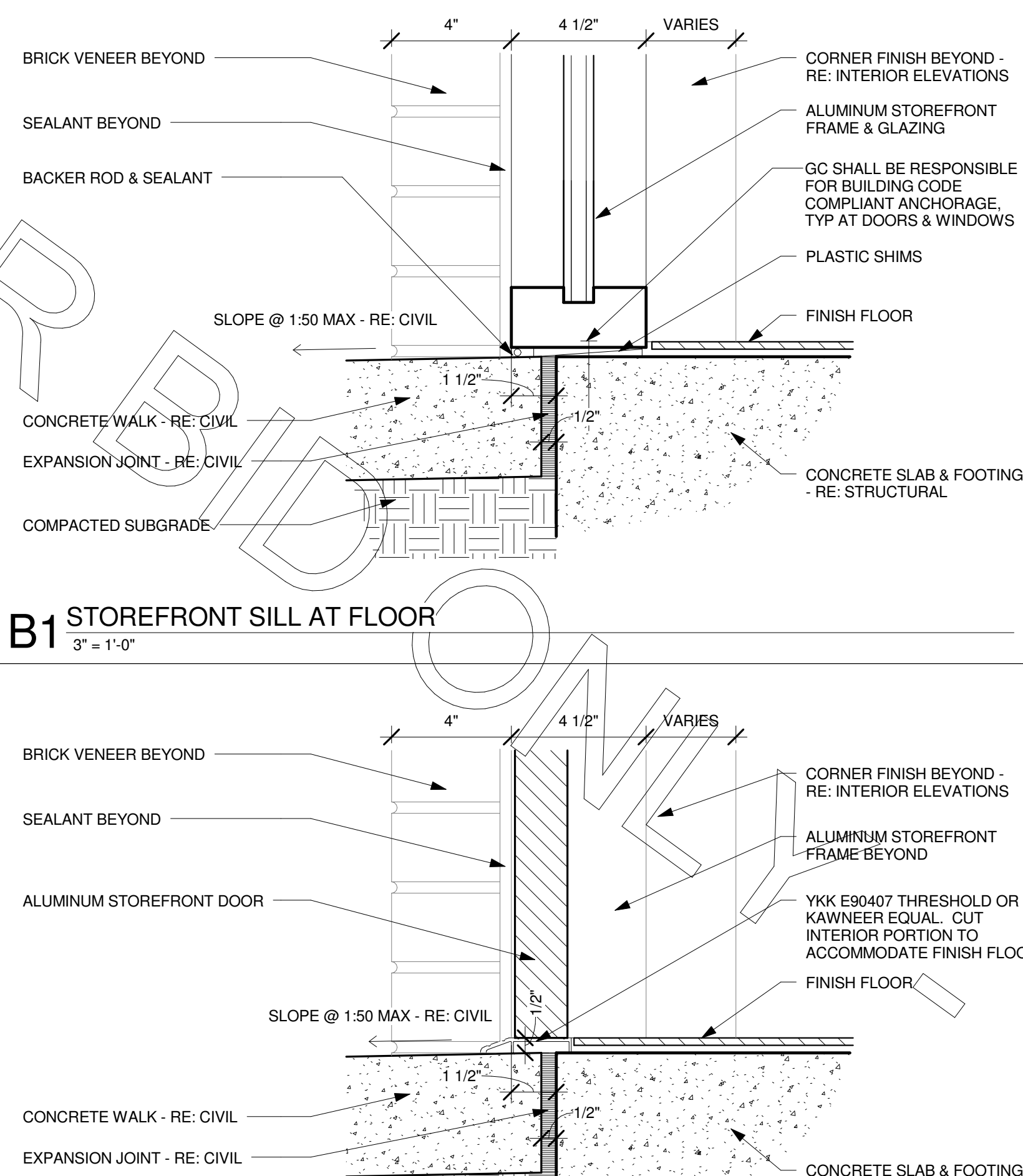
C1 WINDOW JAMB AT NON-RECESSED BRICK
3" = 1'-0"



D1 WINDOW JAMB AT BRICK RECESS
3" = 1'-0"



B1 STOREFRONT SILL AT FLOOR
3" = 1'-0"



A1 STOREFRONT DOOR THRESHOLD DETAIL
3" = 1'-0"



Chick-fil-A

Chick-fil-A
5200 Buffington Road
Atlanta, Georgia 30349-2998

INTERPLAN
ARCHITECTURE
ENGINEERING
INTERIOR DESIGN
PROJECT MANAGEMENT

604 COURTLAND STREET
SUITE 100
ORLANDO, FLORIDA 32804
PH 407.645.5008
FX 407.629.9124

SEAL: THIS DOCUMENT IS NOT FOR CONSTRUCTION UNLESS THE ARCHITECT OR ENGINEER'S SIGNATURE AND SEAL APPEAR BELOW

CHICK-FIL-A
Cherokee Place FSR
115 Cherokee Place, Cartersville, GA 30121

FSR# 00534

REVISION SCHEDULE
NO. DATE DESCRIPTION

CONSULTANT PROJECT # 2016.0430
PRINTED FOR Bid
DATE November 20, 2017
DRAWN BY Designer

Information contained on this drawing and in all digital files produced for above named project may not be reproduced in any manner without express written or verbal consent from Interplan LLC. RESERVES COPYRIGHT & OTHER RIGHTS RESPECTING THESE DOCUMENTS TO BE ORIGINAL SET OR PURPOSE. E201 WHICH THEY WERE PREPARED. REPRODUCTIONS, CHANGES OR ASSIGNMENTS ARE PROHIBITED.

EXTERIOR DETAILS

SHEET NUMBER

A-501