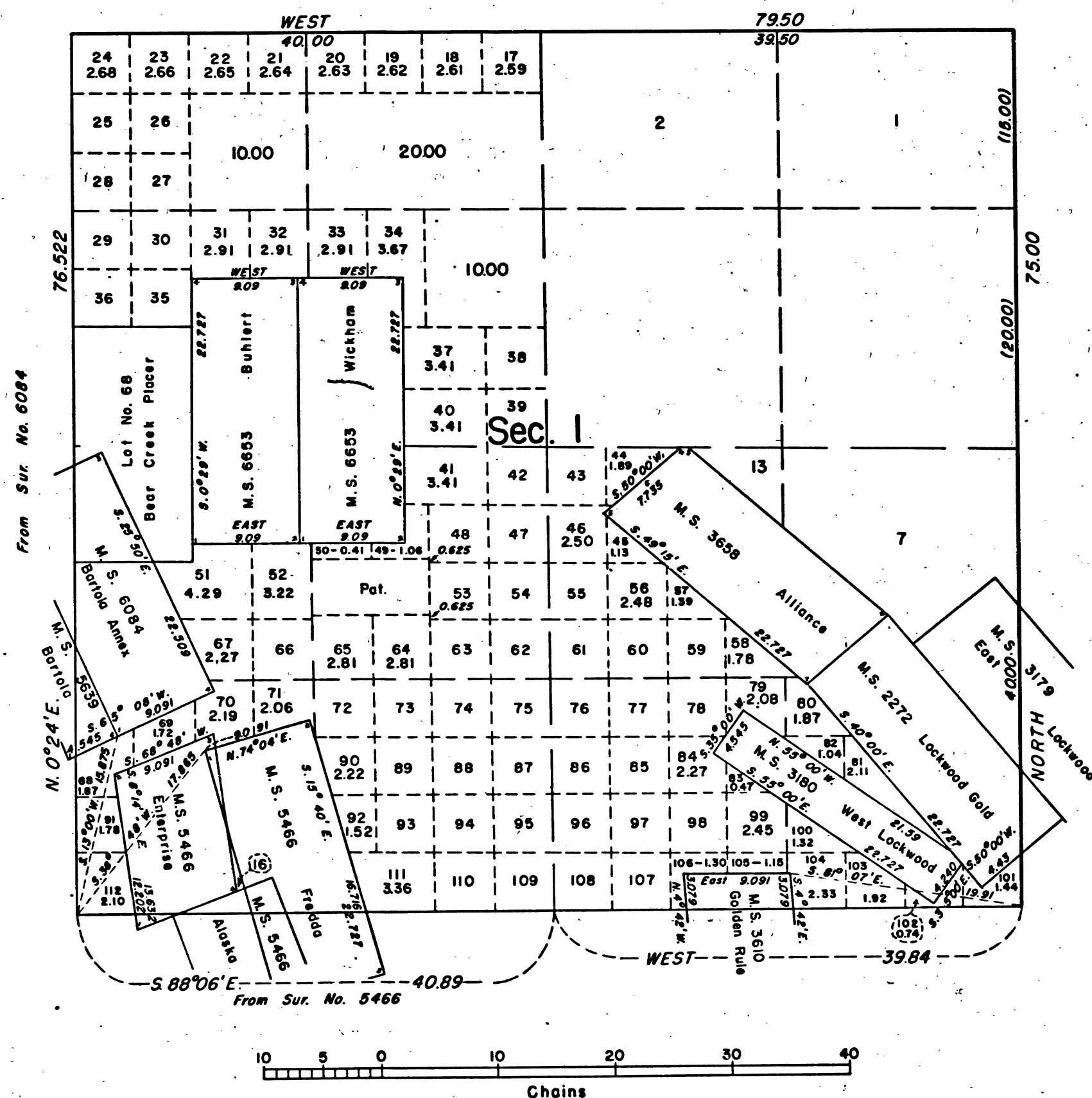


TOWNSHIP 6 NORTH, RANGE 13 EAST, OF THE MOUNT DIABLO MERIDIAN, CALIFORNIA. SUPPLEMENTAL PLAT



This plat, showing amended lottings in Section 1, T. 6 N., R. 13 E., Mount Diablo Meridian, California, is based upon the township plat accepted December 19, 1931 and plats approved May 2, 1871, April 25, 1893, April 8, 1899, and December 16, 1899, and mineral plats approved April 25, 1893 (two plats), November 20, 1884, January 18, 1899, August 28, 1899, September 21, 1920, December 19, 1922, and March 31, 1931.

Lots 25-30, 35, 36, 38, 39, 42, 43, 47, 48, 53, 54, 55, 59-63, 66, 72-78, 85-89, 93-98, and 107-110, contain 2.50 acres each.

UNITED STATES DEPARTMENT OF THE INTERIOR
BUREAU OF LAND MANAGEMENT
Washington, D.C. May 20, 1960

This plat, showing amended lottings, is based upon the official records, and having been correctly prepared in accordance with the regulations, is hereby accepted.

For the Director

Donald Clement

Cadastral Engineering Staff Officer

41 531-F

T. 6N. R. 13E. M.D.M.

BLM 289