

CORNER RECORD

Agency Index

BK 137 PG 68

Document Number

CR 14974

City of OAKLAND

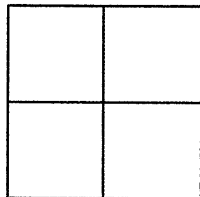
County of ALAMEDA, California

Brief Legal Description MONUMENT LOCATED WITHIN CHEROKEE AVE AND LAWLOR STREET

REFERENCE APN: 48-5609-15

CORNER TYPE

COORDINATES (Optional)



Government Corner ☐ Control ☒
Meander ☐ Property ☐
Rancho ☐ Other ☐

Date of Survey 11/23/2020

N. _____ E. _____

Elevation _____

Units Metric ☐ U.S. Survey Foot ☐

Horizontal Datum _____

Zone _____ Epoch Date _____

Vertical Datum _____

☐ Complies with Public Resources Code §§8801-8819☐ Complies with Public Resources Code §§8890-8902PLS Act Ref: ☐ 8765 (d) ☒ 8771 ☐ 8773 ☐ Other:

Corner/Monument: ☒ Left as found ☐ Established ☐ Rebuilt ☒ Pre-Construction
☐ Found and tagged ☐ Reestablished ☒ Referenced ☐ Post-Construction

Narrative of corner identified and monument as found, set, reset, replaced, or removed:

☐ See sheet #2 for description (s):

FOUND 1/2" BRASS PIN IN MONUMENT WELL

FOUND AND SET POINTS AS SHOWN ON PAGE 2.

THIS POINT WAS REFERENCED PRIOR TO A CONSTRUCTION PROJECT IN THE VICINITY.

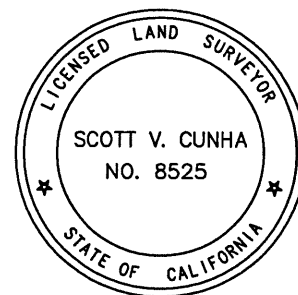
THE TIES SHOWN HEREON ARE FOR THE PURPOSE OF PERPETUATING FOUND MONUMENTATION.

NO CLAIM IS MADE AS TO THE RELATIONSHIP OF THE POINTS OR LINES SHOWN HEREON TO TRUE BOUNDARY LOCATION.

SURVEYOR'S STATEMENT

This Corner Record was prepared by me or under my direction in conformance with

the Professional Land Surveyors' Act on OCTOBER 24, 2020.

Signed SCOTT V. CUNHA P.L.S. or R.C.E. No. 8525

COUNTY SURVEYOR'S STATEMENT

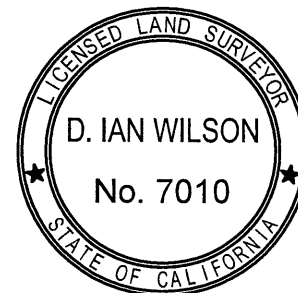
This Corner Record was received _____,

and examined and filed FEB 17 2021.

Signed D. Ian Wilson P.L.S. or R.C.E. No. 7010

Title COUNTY SURVEYOR

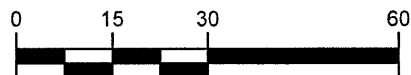
County Surveyor's Comment



LEGEND

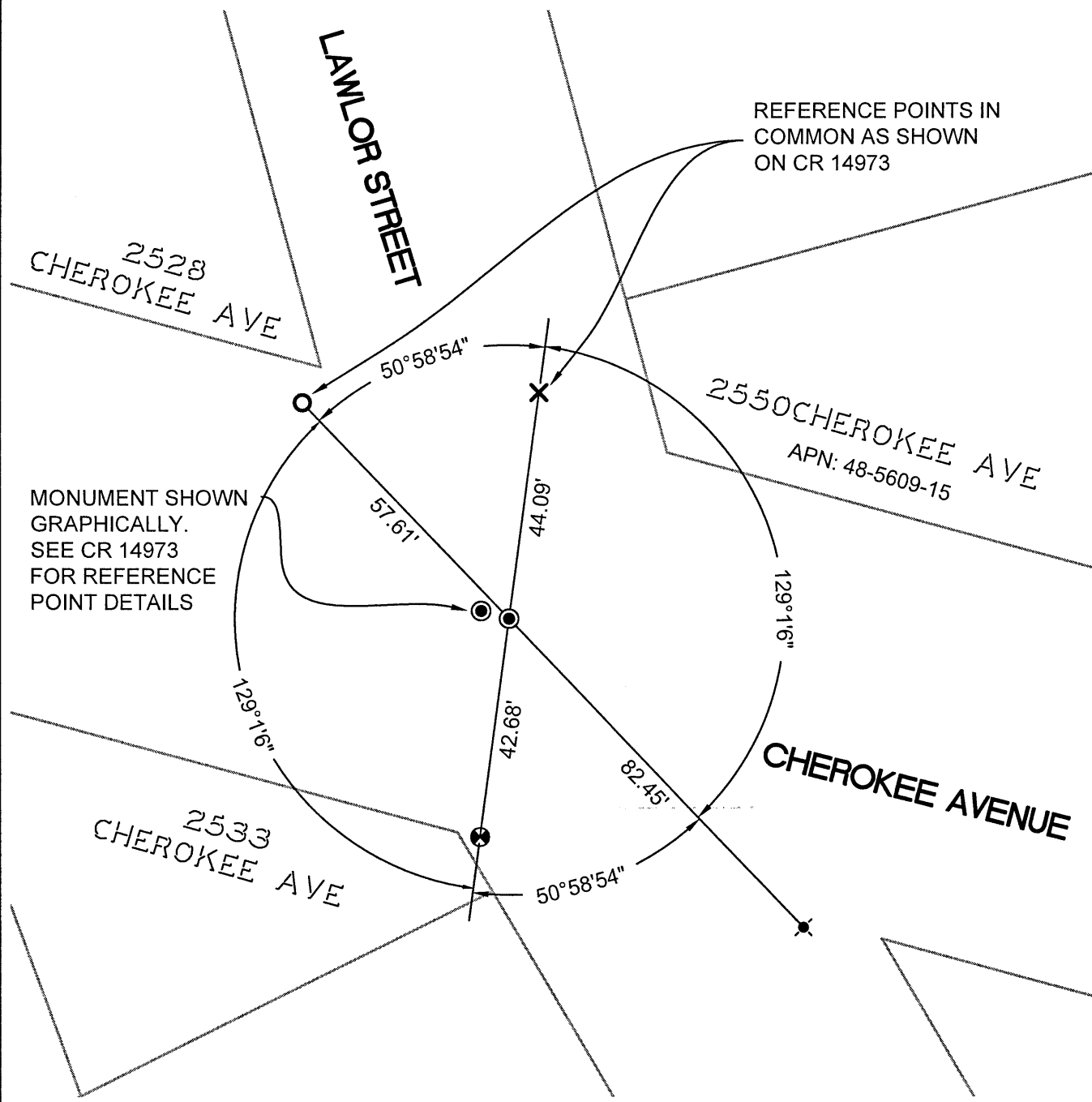
- FOUND 1/4" BRASS PIN IN CONCRETE IN MONUMENT WELL
- ⊗ SET NAIL AND TAG STAMPED "TOWILL RP" IN WALK
- ✕ SET NAIL AND TAG STAMPED "TOWILL RP" IN CURB
- SET NAIL AND TAG STAMPED "TOWILL RP" ON TOP OF WALL
- ✕ SET MAG NAIL AND WASHER STAMPED "TOWILL RP"

APN ASSESSOR'S PARCEL NUMBER
19592 REFERENCE STREET ADDRESS



GRAPHIC SCALE: 1 INCH = 30 FT

ALL MEASUREMENTS ARE IN U.S. SURVEY FOOT AND DECIMAL THEREOF



16509-PR2-CHEROKEE CR-10