

TRACT N° 36-70

CHATEAU SANS NOM N° 2

MONO COUNTY, CALIFORNIA

JUNE, 1973
8 LOTS & LOT AGERALD F. OLDENBURG L.S. 3246
0.987 ACRES

WILLIAMSON & SCHMID, CIVIL ENGINEERS

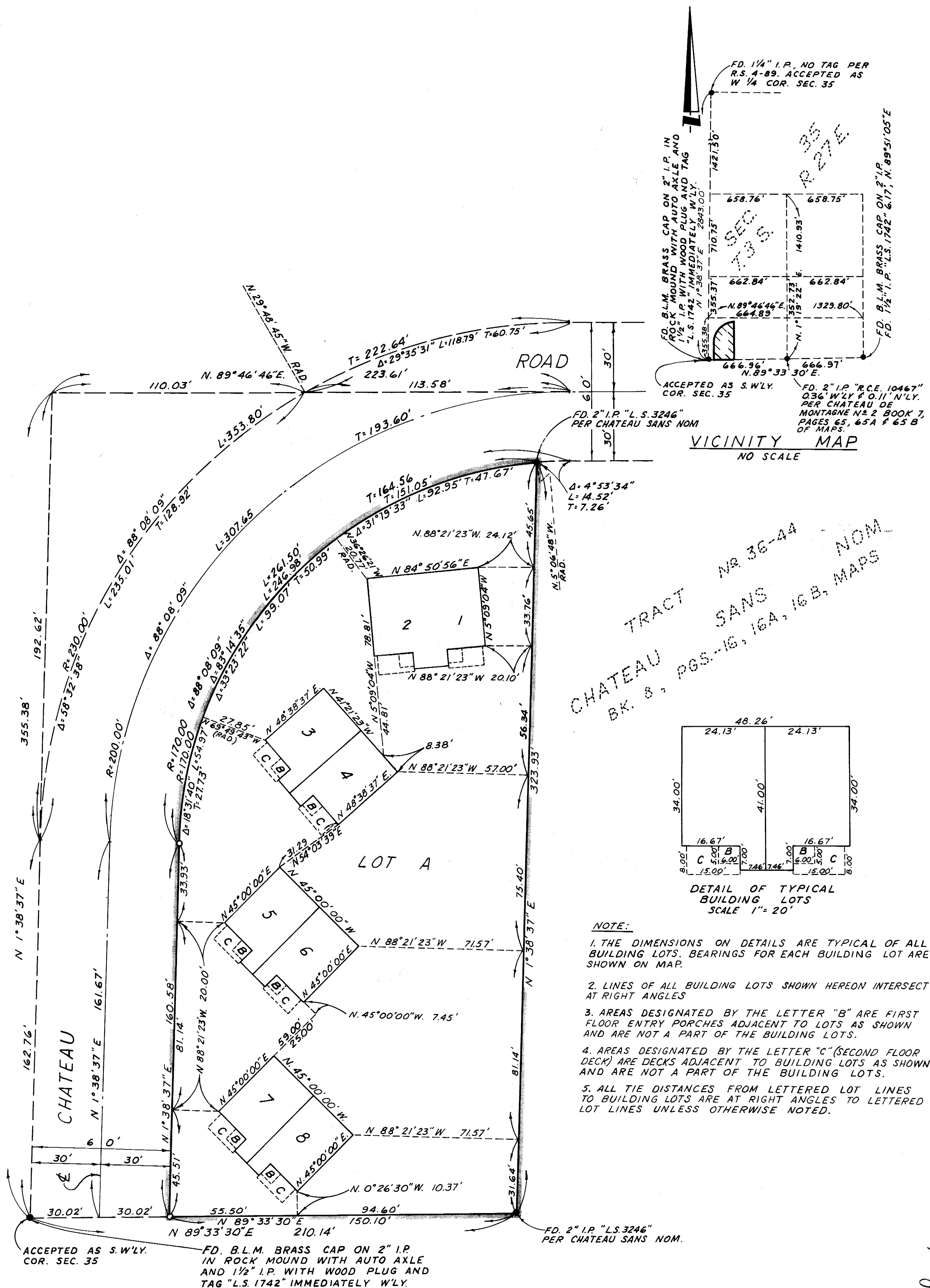
BASIS OF BEARINGS

BEARINGS HEREON ARE BASED ON THE WESTERLY
LINE OF CHATEAU SANS NOM, BEING N 1°38'37"E
PER BOOK 8, PAGES 16, 16A & 16B OF MAPS, RECORDS
OF MONO COUNTY, CALIFORNIA.

MONUMENT NOTE

○ INDICATES SET 2" I.P. TAGGED L.S. 3246
UNLESS OTHERWISE NOTED.

● INDICATES FOUND MONUMENTS AS NOTED



Vol. 8, Pg. 29-A