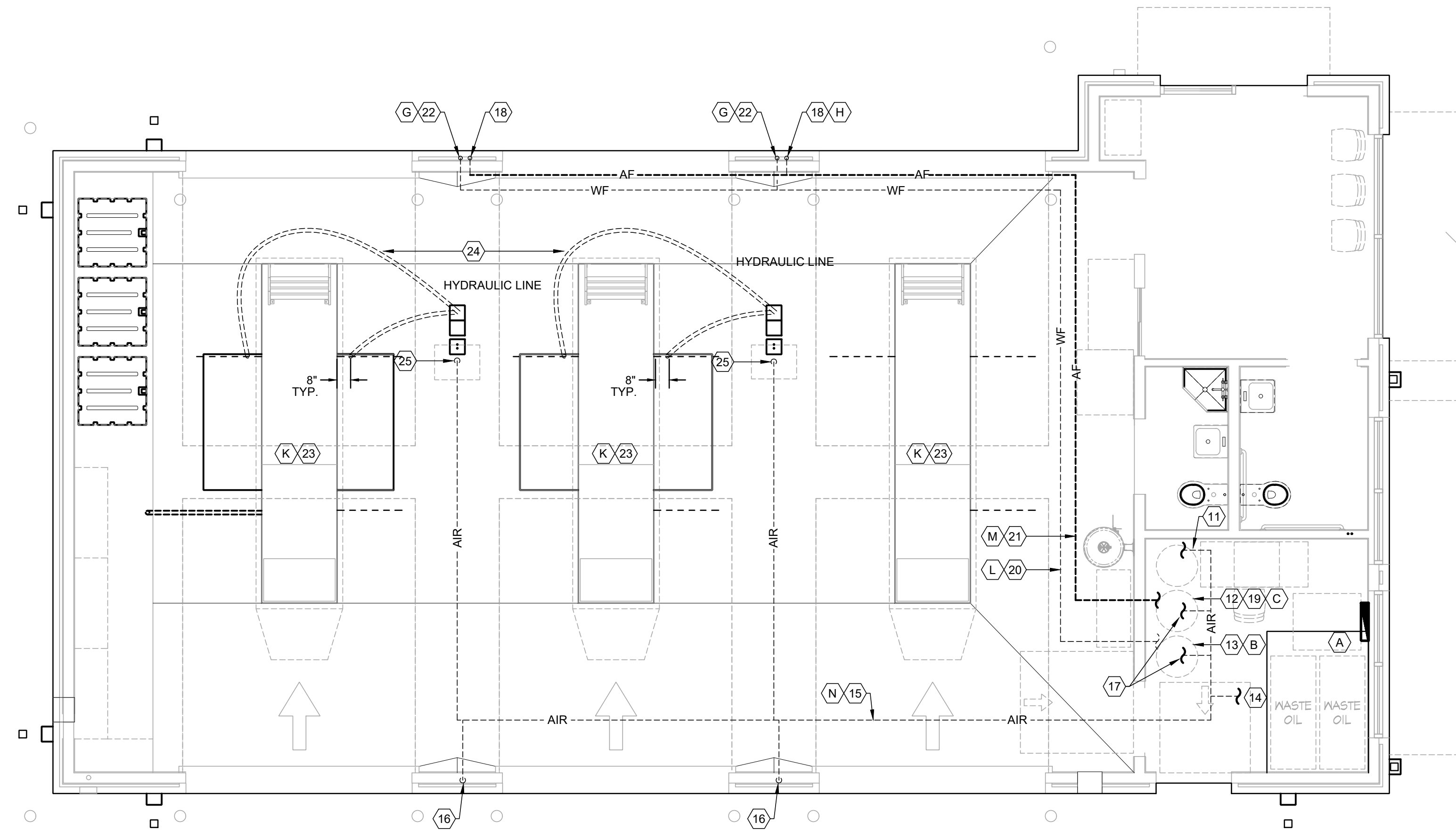


WASTE OIL PLAN

SCALE: 1/4" = 1'-0"



FLUID PLAN

SCALE: 1/4" = 1'-0"

EQUIPMENT & MATERIAL

LIST

- (A) WASTE OIL PUMP: GCO-647016
- (B) WASHER FLUID PUMP: GCO-647016
- (C) ANTI-FREEZE PUMP: GCO-647016
- (D) AIR COMPRESSOR: VT-735-80-1-B
- (E) ROLLING UP TANKS: E203-30
- (F) OIL SPASH GUARD: DG203
- (G) WASHER FLUID NOZZLES: GCO-180685
- (H) ANTI-FREEZE NOZZLES: GCO-180685
- (J) FLEXIBLE WASTE OIL LINES: LISTED UNDER "MISC ITEMS". VENDOR TO CONFIRM & FIELD VERIFY PRIOR TO ORDERING.
- (K) LOW RISE LIFT: BL-BLAZER 9000
- (L) FLEXIBLE WASHER FUILD HOSE: A-CH-4-25-PR14-25A-B
- (M) FLEXIBLE ANTI-FREEZE FUILD HOSE: A-CH-4-25-PR14-25A-G
- (N) FLEXIBLE GENERAL AIR HOSE: A-CH-4-40-PR14-50A-R

WASTE OIL - KEYED NOTES

- (1) DIAPHRAGM PUMP FOR EXTRACTING WASTE OIL FROM PIT SLIDING TRAYS TO WASTE OIL TANK. MOUNT PUMP ON WALL SHELF ABOVE WASTE OIL TANKS AT 84" A.F.F
- (2) PIPING FROM PUMP DISCHARGE INTO WASTE OIL STORAGE TANKS
- (3) FLEXIBLE WASTE OIL LINE UP FROM BELOW GROUND TO PUMP INLET PORT
- (4) 4" PRESSURE RATED SCHEDULE 40 PVC PIPE TURNED UP FROM UNDERGROUND AND TERMINATED AT 3" A.F.F. FLEXIBLE WASTE OIL LINE SHALL CONTINUE UP TO WASTE OIL PUMP
- (5) 4" SCHEDULE 40 PVC PIPE SLEEVE WITH FLEXIBLE WASTE OIL LINE INSIDE, ROUTED BELOW SLAB FROM EDGE OF SERVICE BAYS. CONTRACTOR TO ROUTE PVC PIPE FLAT WITH TOP OF PIPE APPROX 2" BELOW BOTTOM OF FLOOR SLAB (APPROX 8" B.F.F.)
- (6) 1 1/4" OW (SCHEDULE 40 PVC PRESSURE RATED PIPE) ROUTED UNDERGROUND AND THRU PIT WALLS. SEAL PIPE PENETRATIONS OF PIT WALL WITH CLEAR SILICONE SEALANT AROUND PIPE AT WALL.
- (7) 1 1/4" PVC TEE WITH 3" SPOOL PIECE OUT TO A 1 1/4" PVC BALL VALVE WITH THREADED ADAPTOR.
- (8) PROVIDE 24" OF FLEXIBLE OIL HOSE FROM THREADED TITING ON PVC BALL VALVE AND TERMINATE WITH A VENDOR SUPPLIED FEMALE QUICK CONNECT FITTING.
- (9) 30 GALLON SLIDING WASTE OIL TANK MOUNTED ON PIT RAILS INSIDE PIT
- (10) WASTE OIL TANK SHALL BE EQUIPPED WITH THE VENDOR SUPPLIED ALL THREAD FITTING WITH BALL VALVE AND MALE QUICK CONNECT FITTING

AIR & FLUID - KEYED NOTES

- (11) 80 GALLON AIR COMPRESSOR ON 4" THICK HOUSEKEEPING PAD. INSTALL SET OUTLET PSI TO 90 PSI. OWNER TO ADJUST AS NECESSARY. CONTRACTOR TO PROVIDE ALL REQUIRED REGULATORS AS NEEDED AT PUMPS AND VEHICLE LIFTS
- (12) DIAPHRAGM PUMP FOR ANTI-FREEZE DISTRIBUTION TO SERVICE HOSES AT WORK BAYS. MOUNT PUMP ON WALL SHELF ABOVE ANTI-FREEZE TANK AT APPROX 84" A.F.F. CONNECT COMPRESSED AIR PIPING AND FLUID HOSES PER MANUFACTURERS RECOMMENDATIONS
- (13) DIAPHRAGM PUMP FOR WINDSHIELD WASHER FLUID DISTRIBUTION TO SERVICE HOSES AT WORK BAYS. MOUNT PUMP ON WALL SHELF ABOVE ANTI-FREEZE TANK AT APPROX 84" A.F.F. CONNECT COMPRESSED AIR PIPING AND FLUID HOSES PER MANUFACTURERS RECOMMENDATIONS
- (14) DIAPHRAGM PUMP FOR EXTRACTING WASTE OIL FROM PIT SLIDING TRAYS TO WASTE OIL TANKS. MOUNT PUMP ON WALL SHELF ABOVE WASTE OIL TANKS AT APPROX 84" A.F.F. CONNECT COMPRESSED AIR PIPING AND FLUID HOSES PER MANUFACTURERS RECOMMENDATIONS. LOCATION AN AIR LINE SHUT OFF VALVE AT APPROX 60" A.F.F FOR OPERATOR MANUAL USE TO ACTIVATE PUMP. COORDINATE WITH G.C. FOR EXACT LOCATION.
- (15) BLACK STEEL COMPRESSED AIR DISTRIBUTION PIPING ROUTED UP HIGH. ROUTE SUCH THAT PIPING DOES NOT INTERFERE WITH BAY DOOR OPERATION
- (16) COMPRESSED AIR ROUTED DOWN FACE OF WALL TO 24" A.F.F. PROVIDE BALL VALVE JUST ABOVE BOTTOM OF PIPE. CONNECT FLEXIBLE HOSE TO END OF STEEL PIPING
- (17) CONNECT COMPRESSED AIR TO DIAPHRAGM PUMPS. PROVIDE STEEL TEE IN MAIN AND ROUTE FLEXIBLE AIR HOSE TO PUMP INLET CONNECTION. TYPICAL.
- (18) ROUTE FLEXIBLE HOSE FROM PUMP FLUID INLET PORT DOWN INTO WINDSHIELD WASHER FLUID TANK BELOW. CONNECT WITH MANUFACTURER APPROVED FITTINGS.
- (19) ROUTE FLEXIBLE HOSE FROM PUMP FLUID INLET PORT DOWN INTO ANTI-FREEZE FLUID TANK BELOW. CONNECT WITH MANUFACTURER APPROVED FITTINGS.
- (20) ROUTE 1/2" WASHER FLUID PIPING AS SHOWN FROM PUMP OUTLET FITTING TO SERVICE BAYS
- (21) ROUTE 1/2" AF PIPING AS SHOWN FROM PUMP OUTLET FITTING TO SERVICE BAYS
- (22) 1/2" AF & 1/2" WF DROPS DOWN FACE OF WALL BETWEEN BAY DOORS TO 24" A.F.F. CONFIRM WITH OWNER FOR EXACT LOCATION OF DROPS. CONNECT FLUID HOSE AND DISPENSING NOZZLE TO END OF DROPS
- (23) RECESSED PIT LIFT SYSTEM WITH CONTROL BOX/CONSOLE. LIFT PROVIDED AND INSTALLED BY CONTRACTOR. CONTRACTOR TO COORDINATE UNDERGROUND HYDRAULIC LINES PRIOR TO CONSTRUCTION
- (24) CONTRACTOR SHALL BE RESPONSIBLE FOR PLUMBING THE HYDRAULIC LINES TO THE NEW PIT LIFT. THIS INCLUDES THE ROUGH-IN OF 2" PVC PEIPE CONDUIT UNDER SLAB TO LOCATIONS RECOMMENDED BY LIFE MANUFACTURER. ALL PVC ELVOWS SHOULD BE LONG RADIUS. NOT SHORT RADIUS. HYDRAULIC LINES SHOULD EXTEND FROM LIFT CONNECTION TO LIFTCONTROL MODULE. REFER TO MANUFACTURERS INSTRUCTIONS FOR SIZE AND QUANTITY OF HYDRAULIC LINES. FIELD COORDINATION IS REQUIRED FOR THIS EQUIPMENT.
- (25) CONTRACTOR SHALL BE RESPONSIBLE FOR PLUMBING THE PRIMARY COMPRESSED AIR LINE TO THE NEW PIT LIFT CONTROL BOX/CONSOLE AND ALSO THE INTERNAL AIR LINES FORM THE CONSOLE TO THE LIFT. COORDINATE WITH G.C. AND INSTALL PER MANUFACTURERS INSTALLATION INSTRUCTION.



STRICKLAND BROTHERS
TBD NEW SALEM HWY
MURFREESBORO, TN

Revisions:

File Name: 21286
Project No: 21286
Date: 12/13/21
Drawn By: PR
Checked By: NH/DN

SHEET
P1.1
PLUMBING
WASTE OIL
AND FLUIDS
PLAN