



PANDA RESTAURANT GROUP INC.  
1683 Walnut Grove Ave.  
Rosemead, California  
91770  
Telephone: 626.799.9898  
Facsimile: 626.372.8288

All ideas, designs, arrangement and plans indicated or represented by this drawing are the property of Panda Express Inc. and were created for use on this specific project. None of these ideas, designs, arrangements or plans may be used by or disclosed to any person, firm, or corporation without the written permission of Panda Express Inc.

REVISIONS:	
1	06.08.2021 BID ADDENDUM

ISSUE DATE:	
1	04.29.2021 ISSUE FOR PERMIT
2	06.04.2021 ISSUE FOR BID

DRAWN BY: JEL

PANDA PROJECT #: - S8-22-D8135  
C&P PROJECT #: - 2200775



**Cuhaci & Peterson**  
Architects Engineers Planners

2600 Maitland Center Pkwy, Maitland, FL 32751  
P (407) 661-9100  
F (407) 661-9101  
[www.cph.com](http://www.cph.com)  
Florida Corporate Certificate #AA 130628

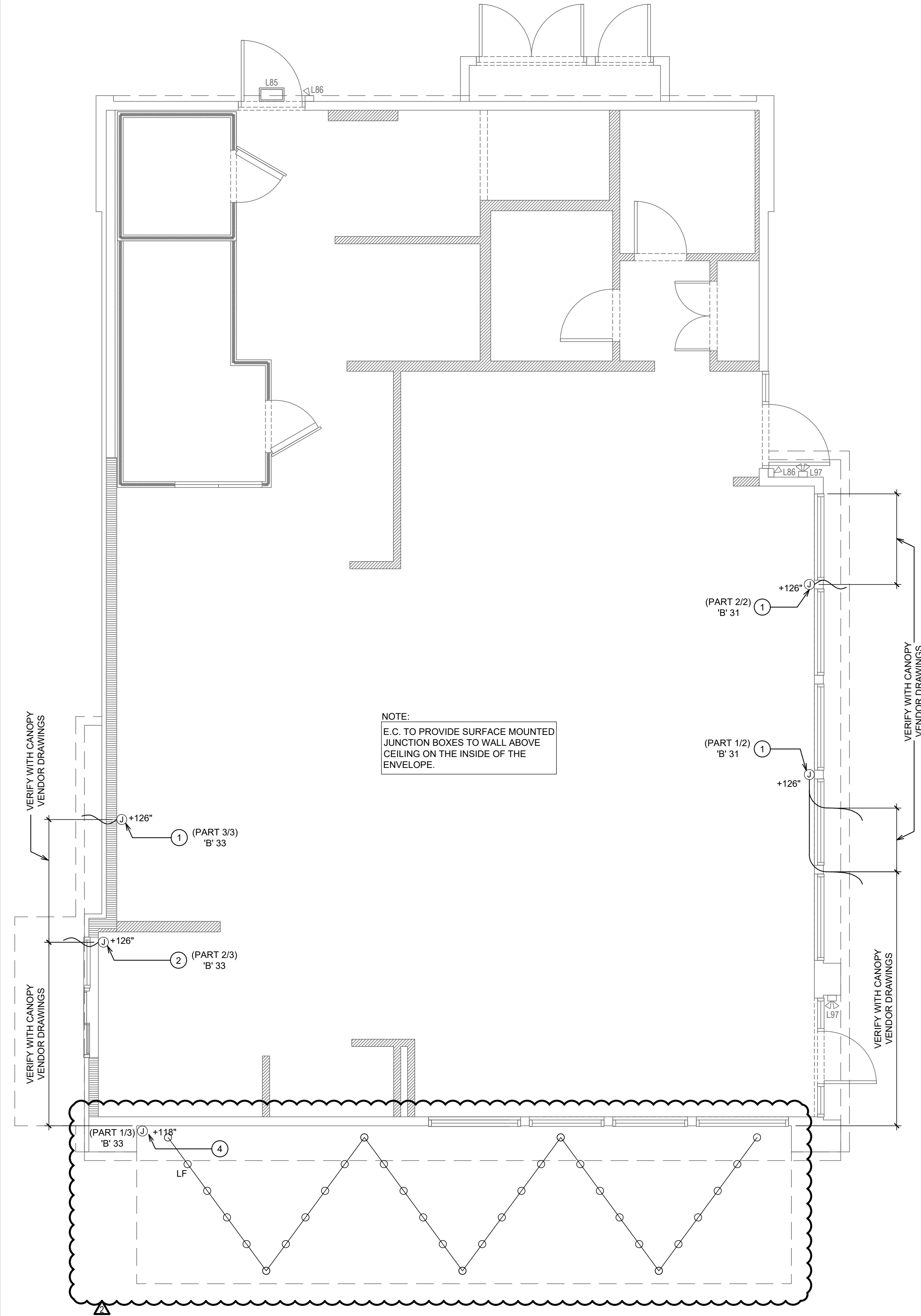
06.04.2021

PANDA EXPRESS  
TRUE WARM AND WELCOME 2300  
SKYBROOKE BOULEVARD & STATE ROAD 54  
LUTZ, FL 33558

E-101.1

CANOPY LIGHTING PLAN

TRUE WARM & WELCOME 2300 R4



1. E.C. TO PROVIDE J-BOX WITH 3' WHIP FOR CONNECTION TO PANDA EXPRESS PROVIDED LIGHTED CANOPY. E.C. TO MAKE FINAL CONNECTION.	
2. E.C. TO PROVIDE J-BOX WITH 3' WHIP FOR CONNECTION TO PANDA EXPRESS PROVIDED LIGHTED DRIVE THRU CANOPY. E.C. TO MAKE FINAL CONNECTION.	
3. ALL JUNCTION BOXES ON THIS SHEET TO BE RECESS MOUNTED.	
4. E.C. TO PROVIDE WEATHERPROOF J-BOX FOR CONNECTION TO PANDA EXPRESS PROVIDED FESTOON LIGHT FIXTURES. E.C. TO INSTALL FESTOON LIGHTING AND MAKE FINAL HARD WIRED CONNECTIONS.	
#	CANOPY LIGHTING KEYED NOTES
2	
NOT TO SCALE	
E-101.1	

CANOPY LIGHTING PLAN	
1	
Scale: 1/4"=1'-0"	
E-101.1	