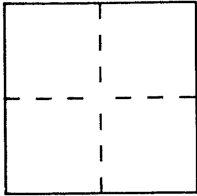


CORNER RECORDDocument Number CR 1380City of BERKELEY County of ALAMEDA, CaliforniaBrief Legal Description MONUMENT NORTH-WESTERLY COLLEGE AVE & DERBY WAY**CORNER TYPE**

Government Corner ☐ Control ☐
 Meander ☐ Property ☒
 Rancho ☐ Other ☐
 Date of Survey 6/9/98

**COORDINATES
(Optional)**

N. _____
 E. _____
 Zone _____ Datum _____
 Elev. _____

Corner — Left as found ☒ Found and tagged ☐ Established ☐ Reestablished ☐ Rebuilt ☐

Identification and type of corner found: Evidence used to identify or procedure used to establish or reestablish the corner:

FOUR PK NAILS WITH BRASS WASHERS WERE SET IN THE
CONCRETE CURBS OF COLLEGE AVE. AND DERBY WAY. WASHERS
ARE STAMPED "EBMUD MON RP." MONUMENT APPEARS TO
BE A CITY OF BERKELEY MONUMENT. MONUMENT DOES
NOT APPEAR ON ANY SUB OR TRACT MAPS FOR THE AREA

A description of the physical condition of the monument as found and as set or reset: MONUMENT IS
A 1/4" PIN SET IN CONCRETE IN A MONUMENT CASING.
MONUMENT IS IN 6" DIA. CASING. LID IS PATTERNED WITH
STARS AND THE LETTERING "MON".

SURVEYOR'S STATEMENT

This Corner Record was prepared by me or under my direction in conformance with
 the Land Surveyors' Act on JUNE 2000.

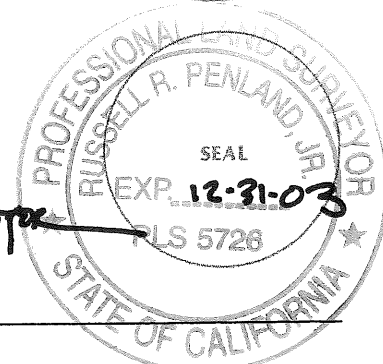
Signed [Signature] L.S. or R.C.E. Number LS 4765

**COUNTY SURVEYOR'S STATEMENT**

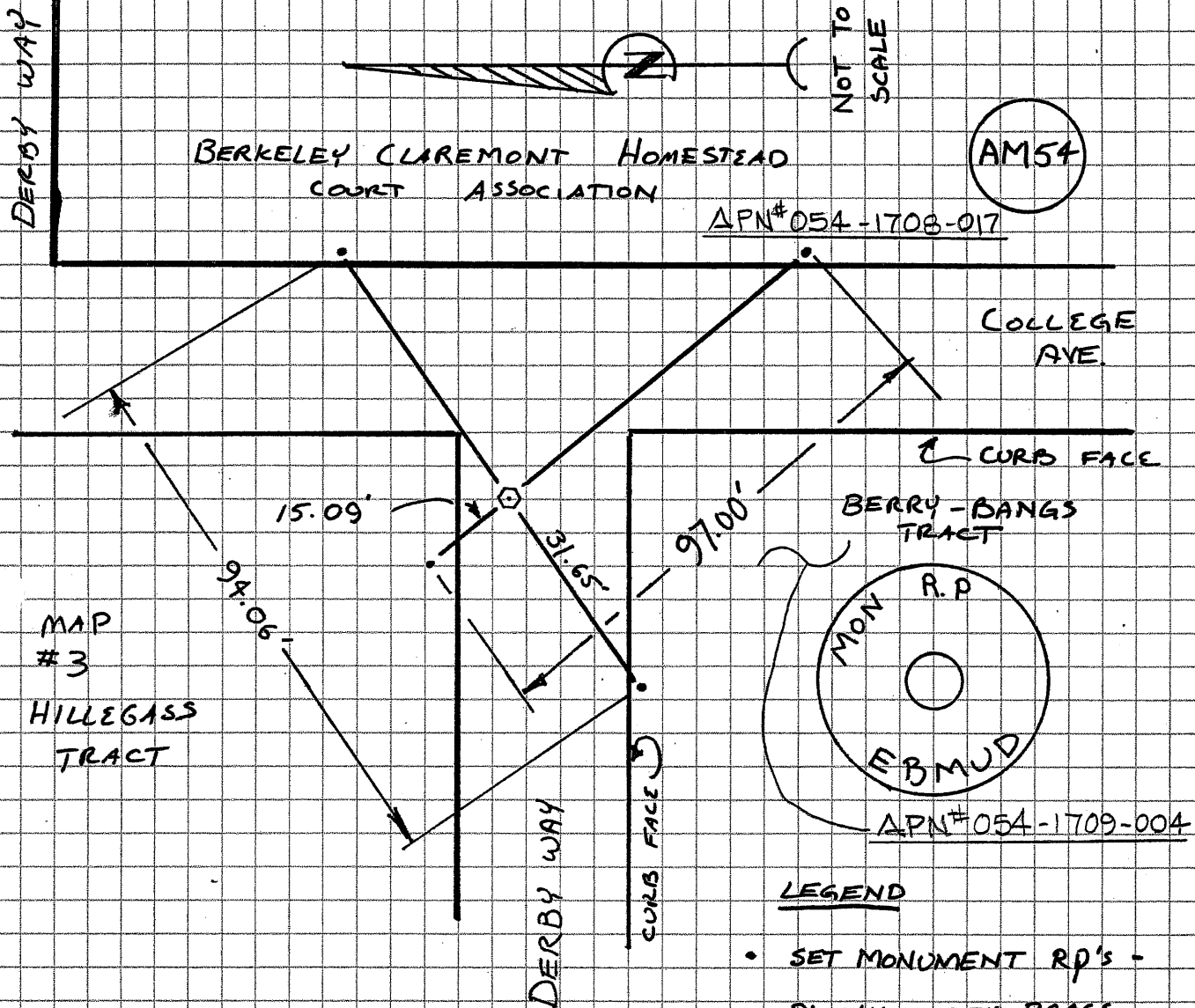
This Corner Record was received 6-13-2000 and examined

and filed 11-02-2000

Signed [Signature] Title County Surveyor



County Surveyor's Comment _____



REF :
THE BERRY BANGS TRACT
MAP NO 3 BK 19 PG 78

MAP NO 3 HILLEGASS TRACT
BK. 11 PG. 72