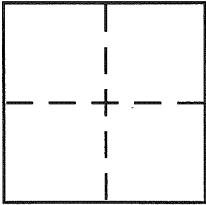


CORNER RECORDDocument Number CR 1669City of BERKELEYCounty of ALAMEDA, CaliforniaBrief Legal Description MONUMENT AT TALBOT AVENUE AND GILMAN STREET**CORNER TYPE**

Government Corner ☐ Control ☐
 Meander ☐ Property ☐
 Rancho ☐ Other ☒
 Date of Survey OCT 28, 2001

COORDINATES (Optional)

N. _____
 E. _____
 Zone _____ NAD27 ☐ NAD83 ☐
 NAD83 Epoch _____
 Elev. _____
 Vert. Datum: NGVD29 ☐ NAVD88 ☐
 Meas. Units: Metric ☐ Imperial ☐

Corner - Left as found ☒ Found and tagged ☐ Established ☐ Reestablished ☐ Rebuilt ☐

Identification and type of corner found: Evidence used to identify or procedure used to establish or reestablish the corner:

MONUMENT, NO MAP AVAILABLE SEE ASSESSORS MAP 60
BK 18 Pg 38 BK 60 Pg 2401
TIED OUT AND LEFT AS FOUND

A description of the physical condition of the monument as found and as set or reset:

NAIL IN CONCRETE POST NO TAG IN MONUMENT CASING
LEFT AS FOUND

SURVEYOR'S STATEMENT

This Corner Record was prepared by me or under my direction in conformance with the Land Surveyor's Act on JAN 28 2002

Signed Dr. K. H. P.L.S. or R.C.E. No. 6811

COUNTY SURVEYOR'S STATEMENT

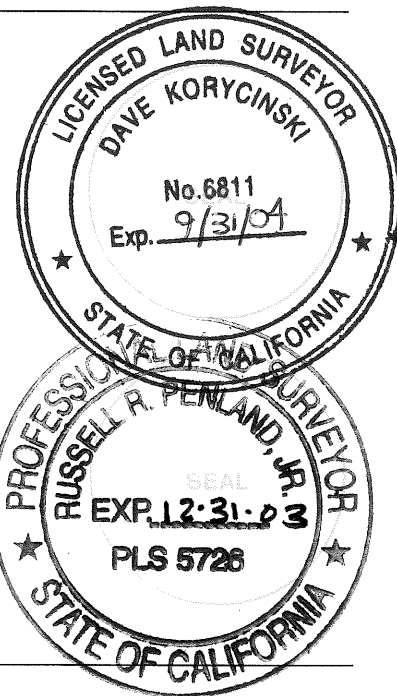
This Corner Record was received 3.21.02

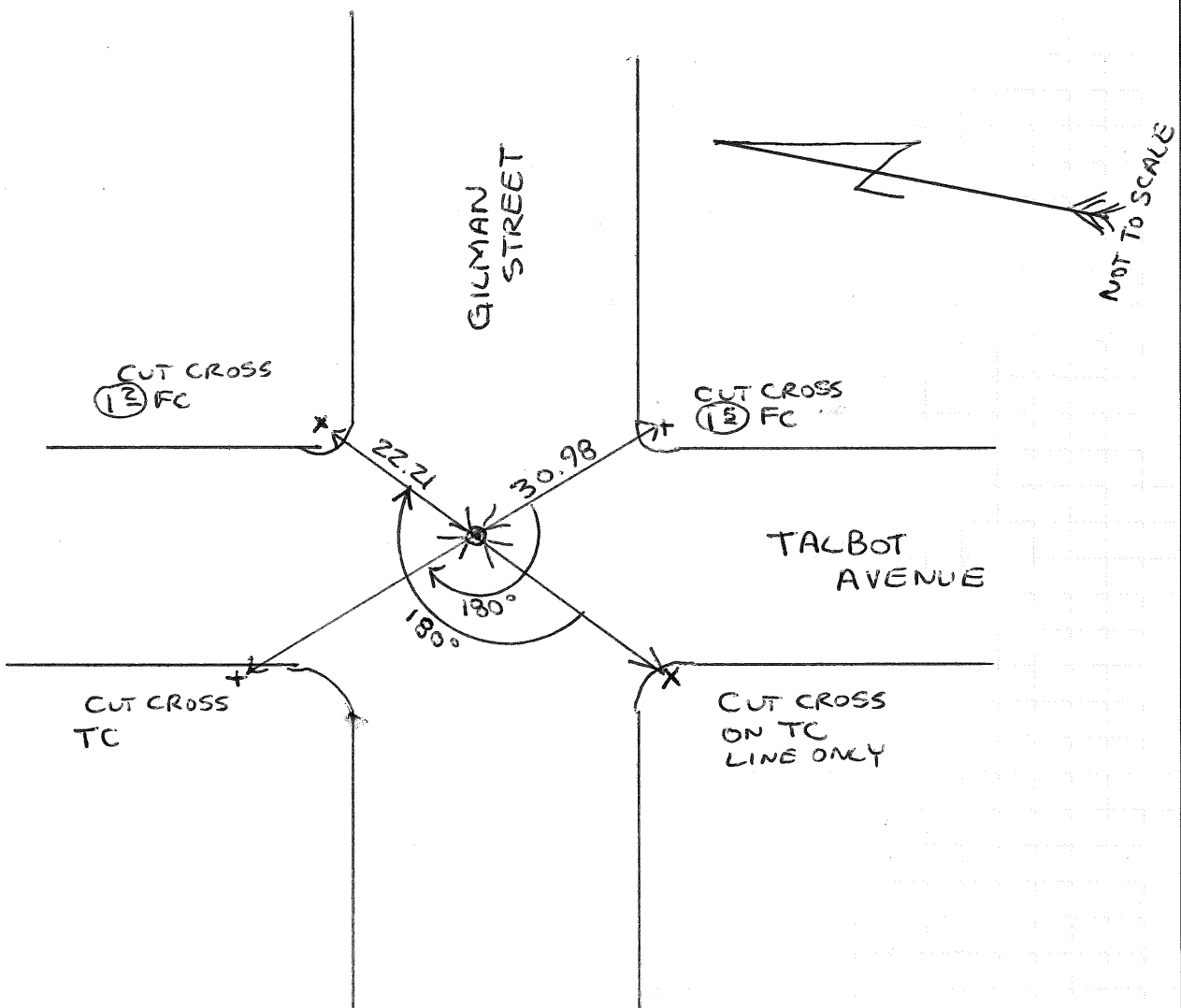
and examined and filed 5.29.02

Signed Russell R. Penland, Jr. P.L.S. or R.C.E. No. 5726

Title COUNTY SURVEYOR

County Surveyor's Comment _____





⊙ MONUMENT

+ CUT CROSS