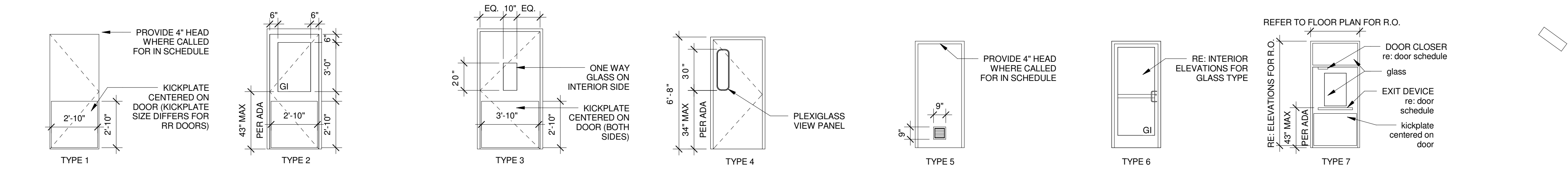


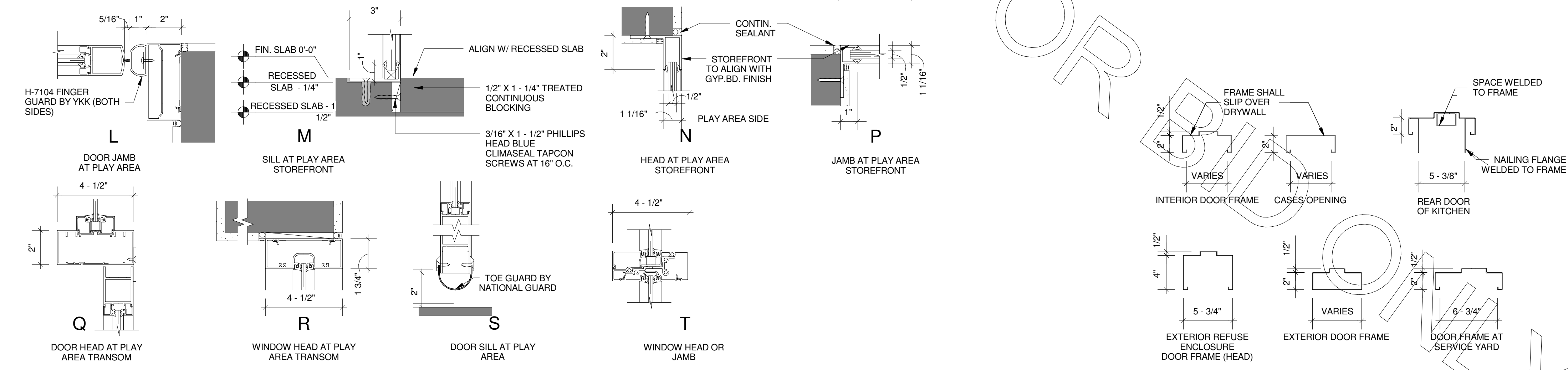
NOTES

1. ALL CONSTRUCTION AND FINAL CORES ARE TO BE ORDERED BY G.C. FROM LOCKNET.
2. ALL DOOR AND HARDWARE TO BE ORDERED BY G.C. THROUGH SUPPLIERS AS INDICATED ABOVE.
3. CLOSERS TO BE ADJUSTED TO COMPLY WITH ADA OPERATING FORCE REQUIREMENTS OF 5 LBS MAX FOR ALL ADA & ANSI HINGED DOORS. INTERIOR DOORS HINGED WITH CLOSER.
4. KICK PLATE SIZE FOR CLOSET DOORS SHOULD BE 8" X 17".
5. "NOT USED"
6. FOR WEATHERSTRIPPING, DRIP CAP, AND THRESHOLD SPECS NOTED ABOVE COORDINATE EXACT MODEL NUMBER WITH SIZE OF OPENING.
7. DRIP CAP REQUIRED AT ALL EXTERIOR DOORS, EXCLUDING ELECTRICAL ROOM, U.N.O.
8. NO SILENCERS REQUIRED AT EXTERIOR TRASH STORAGE ROOM DOOR.

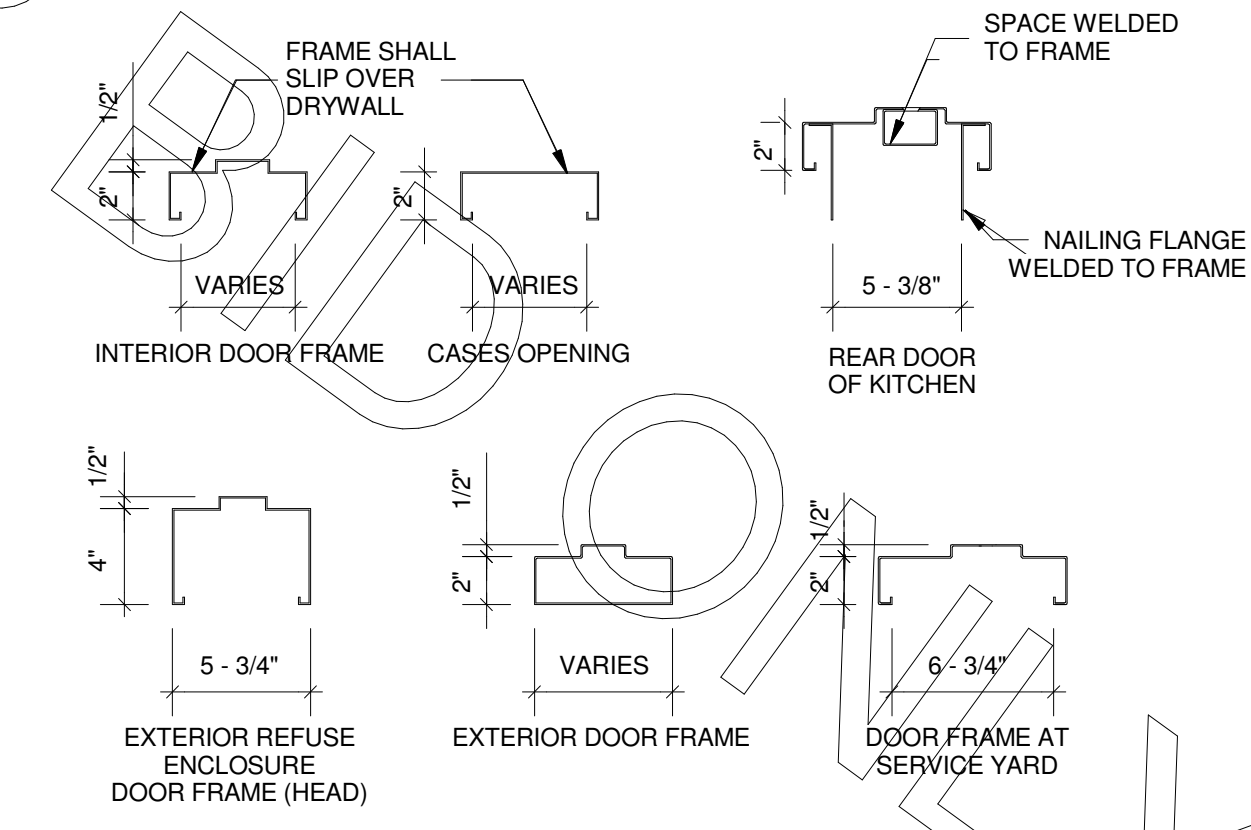
DOOR TYPES
1/4" = 1'-0"



STOREFRONT PROFILES
3" = 1'-0"

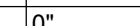


HOLLOW METAL FRAME PROFILES
1 1/2" = 1'-0"



DOOR HARDWARE SCHEDULE						
SUPPLIER	QTY.	ITEM	YKK		KAWNEER	
			MANUFACTURER	MODEL NUMBER	MANUFACTURER	MODEL NUMBER
SET #01						
YKK OR KAWNEER	2	PANIC PULL	YKK	H1541	KAWNEER	137730
YKK OR KAWNEER	1 SET	EXIT DEVICE	YKK	P52497	DOMFALCON	1690
YKK OR KAWNEER	1	RIM CYLINDER	SARGENT	P42741	SARGENT	#63-41-101
YKK OR KAWNEER	2	CLOSER	YKK	H6104	LCN	4041 SMC
YKK OR KAWNEER	2	CONTINUOUS HINGE	YKK	H20100	HAGER	050820-40
YKK OR KAWNEER	1	THRESHOLD	YKK	E90407	KAWNEER	037869
YKK OR KAWNEER	2	DOOR SWEEP	YKK	H7107	KAWNEER	200798
SET #02						
YKK OR KAWNEER	1	PUSH / PULL	YKK	H1141	KAWNEER	137703
YKK OR KAWNEER	1	DOOR CLOSER	LCN CLOSERS	H6104	LCN CLOSERS	#4041
YKK OR KAWNEER	1 SET	O/S PIVOTS	YKK	#H2101RH H2102LH	KAWNEER	050322, 050326 (RH)
YKK OR KAWNEER	1	FLOOR STOP	ROCKWOOD	P71203626	ROCKWOOD	483X-US32D
SET #03						
YKK OR KAWNEER	1	PULL	YKK	H1541	KAWNEER	137730
YKK OR KAWNEER	1	EXIT DEVICE	YKK	P54453	DOMFALCON	1690
YKK OR KAWNEER	1	DOOR CLOSER	LCN CLOSERS	H6104	LCN CLOSERS	#4041
YKK OR KAWNEER	1	CONTINUOUS HINGE	YKK	H20100	HAGER	050820-40
YKK OR KAWNEER	1	THRESHOLD	YKK	E90407	KAWNEER	037862
YKK OR KAWNEER	1	RIM CYLINDER	SARGENT	P42741	SARGENT	#63-34
YKK OR KAWNEER	1	DOOR SWEEP	YKK	H7107	KAWNEER	200795
YKK OR KAWNEER	1	FLOOR STOP	ROCKWOOD	P71203626	ROCKWOOD	483X-US32D
SET #04						
YKK OR KAWNEER	1	DOOR CLOSER	LCN CLOSERS	H6104	LCN CLOSERS	4041
YKK OR KAWNEER	1	TOE GUARD	NATIONAL GUARD	P78950	NATIONAL GUARD	14RKB X 36"
YKK OR KAWNEER	1 SET	DOOR PUSH	YKK	P111020	ROCKWOOD	BF15947-2
YKK OR KAWNEER	1 SET	DOOR PULL	YKK	P111020	ROCKWOOD	BF15947-2
YKK OR KAWNEER	2	FINGER GUARD	YKK	H7104	KAWNEER	038365
YKK OR KAWNEER	1 SET	CENTER PIVOT HINGE	YKK	H2502H2401	KAWNEER	037848, 037942, 050351, 060370, 047600
SET #05						
YKK OR KAWNEER	1	EXIT DEVICE	YKK	P54453	DOMFALCON	1690
YKK OR KAWNEER	1	DOOR CLOSER	LCN CLOSERS	H6104	LCN CLOSERS	#4041
YKK OR KAWNEER	1	CONTINUOUS HINGE	YKK	H20100	HAGER	050820-40
YKK OR KAWNEER	1	THRESHOLD	YKK	E90407	KAWNEER	037862
YKK OR KAWNEER	2	RIM CYLINDER	SARGENT	P42741	SARGENT	#63-34
YKK OR KAWNEER	1	DOOR SWEEP	YKK	H7107	KAWNEER	200795
YKK OR KAWNEER	1	FLOOR STOP	ROCKWOOD	P71203626	ROCKWOOD	483X-US32D
SET #06						
YKK OR KAWNEER	2	DOOR PUSH / PULL	YKK	H1141	KAWNEER	137703
YKK OR KAWNEER	2	DOOR CLOSER	LCN CLOSERS	H6104	LCN CLOSERS	#4041
YKK OR KAWNEER	2 SETS	O/S PIVOTS	YKK	H2101RH H2102LH	KAWNEER	050322, 050323, 035506
YKK OR KAWNEER	2	FLOOR STOP	ROCKWOOD	P71203626	ROCKWOOD	483X-US32D
SET #07						
YKK OR KAWNEER	1	PUSH / PULL	YKK	H1141	KAWNEER	137703
YKK OR KAWNEER	1	DOOR CLOSER	LCN CLOSERS	H6104	LCN CLOSERS	#4041
YKK OR KAWNEER	1 SET	O/S PIVOTS	YKK	H2101RH H2102LH	KAWNEER	050322, 050326 (RH)
SET #08						
LOCKNET	3	STANDARD HINGE	MCKINNEY	TA2314 4-1/2" X 4-1/2" (NRP) US32D		
LOCKNET	1	KEYPAD CYLINDRICAL LOCK	SARGENT	21 28-KP10077 LL US26D MK		
LOCKNET	1	DOOR CLOSER	SARGENT	351 CP SH EN		
LOCKNET	1	KICK PLATE	ROCKWOOD	K1050 36" X 34" US32D 4BE		
LOCKNET	1	WALL DOOR STOP	ROCKWOOD	403 US26D		
LOCKNET	1	WEATHER STRIPPING	PEMCO	S88 D17		
SET #09						
LOCKNET	3	STANDARD HINGE	MCKINNEY	TA2714 4-1/2" X 4-1/2" (NRP) X US26D		
LOCKNET	1	LOCKSET	SARGENT	28 60-10605 LL X US26D		
LOCKNET	1	DOOR CLOSER	SARGENT	351 CP SH EN		
LOCKNET	1	KICK PLATE	ROCKWOOD	K1050 36" X 34" US32D 4BE		
LOCKNET	3	SILENCER	ROCKWOOD	608		
LOCKNET	1	WALL DOOR STOP	ROCKWOOD	403 US26D		
SET #10						
KEC	1	DOOR PULL	HAGER COMPANIES	8" ALUM (US28)		
SET #11						
ELIASON	2	DOOR PULL	HAGER COMPANIES	6" ALLUM (US32D) MODEL 3E		
SET #13						
LOCKNET	1	PIANO HINGE	PEMCO	CMF83 HD X ALUM X TEK		
LOCKNET	1	LOCKSET	SARGENT	28-1160-10604 LL US26D MK		
LOCKNET	1	LOCK GUARD	ROCKWOOD	321 X US32D		
LOCKNET	1	THRESHOLD	PEMCO	171A		
LOCKNET	1	DOOR SWEEP	PEMCO	315CN (TKSP8)		
LOCKNET	1 SET	WEATHER STRIPPING	PEMCO	303AS (TKSP8)		
LOCKNET	1	DRIP TOP SWEEP	PEMCO	346C (TKSP8)		
LOCKNET	3	DOOR SILENCER	ROCKWOOD	608		
LOCKNET	1	DOOR CLOSER	SARGENT	351 CP SH EN		
LOCKNET	1	KICK PLATE	ROCKWOOD	K1050 36" X 34" US32D 4BE		
SET #17						
LOCKNET	3	STANDARD HINGE	MCKINNEY	TA2714 4-1/2" X 4-1/2" (NRP) X US26D		
LOCKNET	1	PUSH PLATE	ROCKWOOD	70E US32DMS		
LOCKNET	1	PULL PLATE	ROCKWOOD	BF110 X 70C US32DMS TYPE 1		
LOCKNET	1	DOOR CLOSER	SARGENT	351 CP SH EN		
LOCKNET	3	SILENCER	ROCKWOOD	608		
LOCKNET	1	KICK PLATE	ROCKWOOD	K1050 36" X 34" US32D 4BE - PUSH SIDE		
LOCKNET	1	WALL STOP	ROCKWOOD	403 US26D		
SET #18						
LOCKNET	3	STANDARD HINGE	MCKINNEY	TA2714 4-1/2" X 4-1/2" (NRP) X US26D		
LOCKNET	1	PUSH PLATE	ROCKWOOD	70E US32DMS		
LOCKNET	1	TRIMCO PULL BAR	TRIMCO	BF110 X 70C US32DMS TYPE 1 (INSWING)		
LOCKNET	1	DOOR CLOSER	SARGENT	351H(OUTSWING)351 CP SH		
LOCKNET	3	SILENCERS	ROCKWOOD	608		
LOCKNET	1	KICK PLATE	ROCKWOOD	K1050 36" X 34" US32D 4BE - PUSH SIDE		
LOCKNET	1	WALL STOP	ROCKWOOD	403 US26D		
SET #19						
LOCKNET	6	STANDARD HINGE	MCKINNEY	TA3386 4-1/2" X 4-1/2" (NRP) US32D		
LOCKNET	2	FLUSH BOLT	ROCKWOOD	555 US26D		
LOCKNET	1	LOCKSET	SARGENT	28-1160-10604 LL US26D		
LOCKNET	1	SURFACE CLOSER	SARGENT	351 CP SH EN		
LOCKNET	2	KICK PLATE	ROCKWOOD	K1050 36" X 34" US32D 4BE		
LOCKNET	1	LOCK PROTECTOR	ROCKWOOD	321 X US32D		
LOCKNET	1	THRESHOLD	PEMCO	271D72		
LOCKNET	1	WEATHER STRIPPING	PEMCO	303AS 72" X 64" (TKSP8)		
LOCKNET	2	WEATHER STRIPPING	PEMCO	315CN (TKSP8)		
LOCKNET	1	MISCELLANEOUS ITEM	PEMCO	346A 76"		

3

DOOR NUMBER	DESCRIPTION	DOOR							FRAME					
		SIZE			DOOR TYPE	MATERIAL	FINISH	Hardware Comments	MATERIAL	HEAD	JAMB	SILL		
		HEIGHT	WIDTH	THICK										
1	ENTRY (PAIR)	7'-0"	6'-0"	1 3/4"	6	ALUMINUM W GLASS	DARK BRONZE	SET #01	ALUMINUM	A-801/B	A-801/A	A-801/C		
2	DRIVE THRU	7'-0"	3'-0"	1 3/4"	6	ALUMINUM W GLASS	DARK BRONZE	SET #02	ALUMINUM	A-801/A	A-801/A	A-801/C		
3	DRIVE THRU	7'-0"	3'-0"	1 3/4"	6	ALUMINUM W GLASS	DARK BRONZE	SET #02	ALUMINUM	A-801/A	A-801/A	A-801/C		
4	EXIT ONLY 	7'-0"	3'-0"	1 3/4"	6	ALUMINUM W GLASS	DARK BRONZE	SET #03	ALUMINUM	A-801/A	A-801/B	A-801/C		
5	OFFICE	6'-8"	3'-0"	1 3/4"	2	INSULATED METAL	PL-2	SET #09	HOLLOW METAL	A-801	A-801	A-801		
6	MULTIPURPOSE	6'-8"	4'-0"	0"					HOLLOW METAL	A-801	A-801	A-801		
7	RR VESTIBULE	6'-8"	3'-0"	1 3/4"	1	S.C. WOOD	PL-2	SET #08	HOLLOW METAL	A-801	A-801	A-801		
8	RESTROOM	6'-8"	2'-2"	1 3/4"	1	S.C. WOOD	PL-2	SET #18	HOLLOW METAL	A-801	A-801	A-801		
9	RESTROOM	6'-8"	3'-0"	1 3/4"	1	S.C. WOOD	PL-2	SET #18	HOLLOW METAL	A-801	A-801	A-801		
10	RESTROOM	6'-8"	3'-0"	1 3/4"	1	S.C. WOOD	PL-2	SET #18	HOLLOW METAL	A-801	A-801	A-801		
11	MOBILE ENTRY	7'-0"	3'-0"	1 3/4"	6	ALUMINUM W GLASS	DARK BRONZE	SET #03	ALUMINUM	A-801/A	A-801/B	A-801/C		
12	PLAY AREA	7'-0 1/4"	3'-0"	1 3/4"	6	ALUMINUM W GLASS	DARK BRONZE	SET #04	ALUMINUM	A-801/Q/R	A-801/K/L	A-801		
13	KITCHEN	6'-8"	3'-0"	1 3/4"	4	STAINLESS STEEL	SS	SET #11	SEE ZIGMAN PRODUCTS PACKAGE	A-801	A-801	A-801		
14	LOADING	7'-0"	4'-0"	1 3/4"	3	SEE ZIGMAN PRODUCTS PACKAGE	SEE ZIGMAN PRODUCTS PACKAGE	BY OTHERS	SEE ZIGMAN PRODUCTS PACKAGE	A-801	A-801	A-801		
15	DRIVE THRU / EXIT ONLY	7'-0"	3'-0"	1 3/4"	6	ALUMINUM W GLASS	DARK BRONZE	SET #03	ALUMINUM	A-801/A	A-801/B	A-801/C		
16	ENTRY (PAIR)	7'-0"	6'-0"	1 3/4"	6	ALUMINUM W GLASS	DARK BRONZE	SET #01	ALUMINUM	A-801/A	A-801/B	A-801/C		

3

2

1



Chick-fil-A

5200 Buffington Road
Atlanta, Georgia 30349-2998

INTERPLAN

ARCHITECTURE
ENGINEERING
INTERIOR DESIGN
PROJECT MANAGEMENT

604 COURTLAND STREET
SUITE 100
ORLANDO, FLORIDA 32804
PH 407.645.5038
FX 407.629.9124

SEAL:
THIS DOCUMENT IS NOT FOR CONSTRUCTION
UNLESS THE ARCHITECT OR ENGINEER'S
SIGNATURE AND SEAL APPEAR BELOW

CHICK-FIL-A
Cherokee Place FSR
115 Cherokee Place, Cartersville, GA 30121

FSR# 00534

REVISION SCHEDULE
NO. DATE DESCRIPTION
1 01/19/18 COORDINATION REVISIONS

CONSULTANT PROJECT # 2017.0149
PRINTED FOR Bid
DATE November 20, 2017
DRAWN BY AD
DOOR AND HARDWARE SCHEDULES
SHEET NUMBER
A-801