

— अनुच्छेद १०० —

 Σ

100

12
T
r
12
13
14

MICROFILM

PROPERTY OF
SANTA CLARA CO.
OFFICE OF T. E.
COUNTY SURVEYOR
DRAWING
JME:R

MICROFILM



MAP of

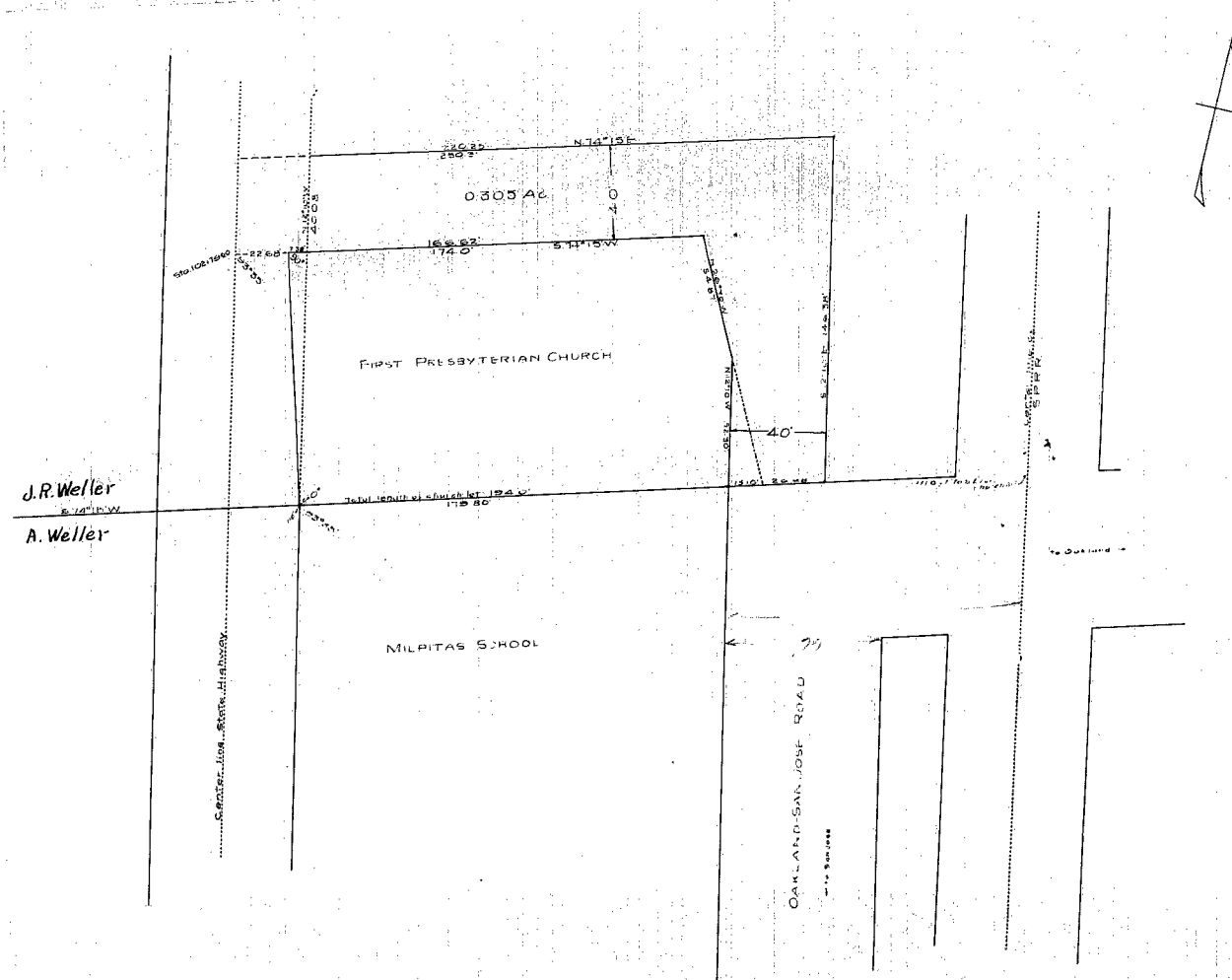
TULLY and WHITE ROADS

from the King to the Cleaves Road

Scale 1 inch = 5 chs

ILFyoe & Co. Surveyor

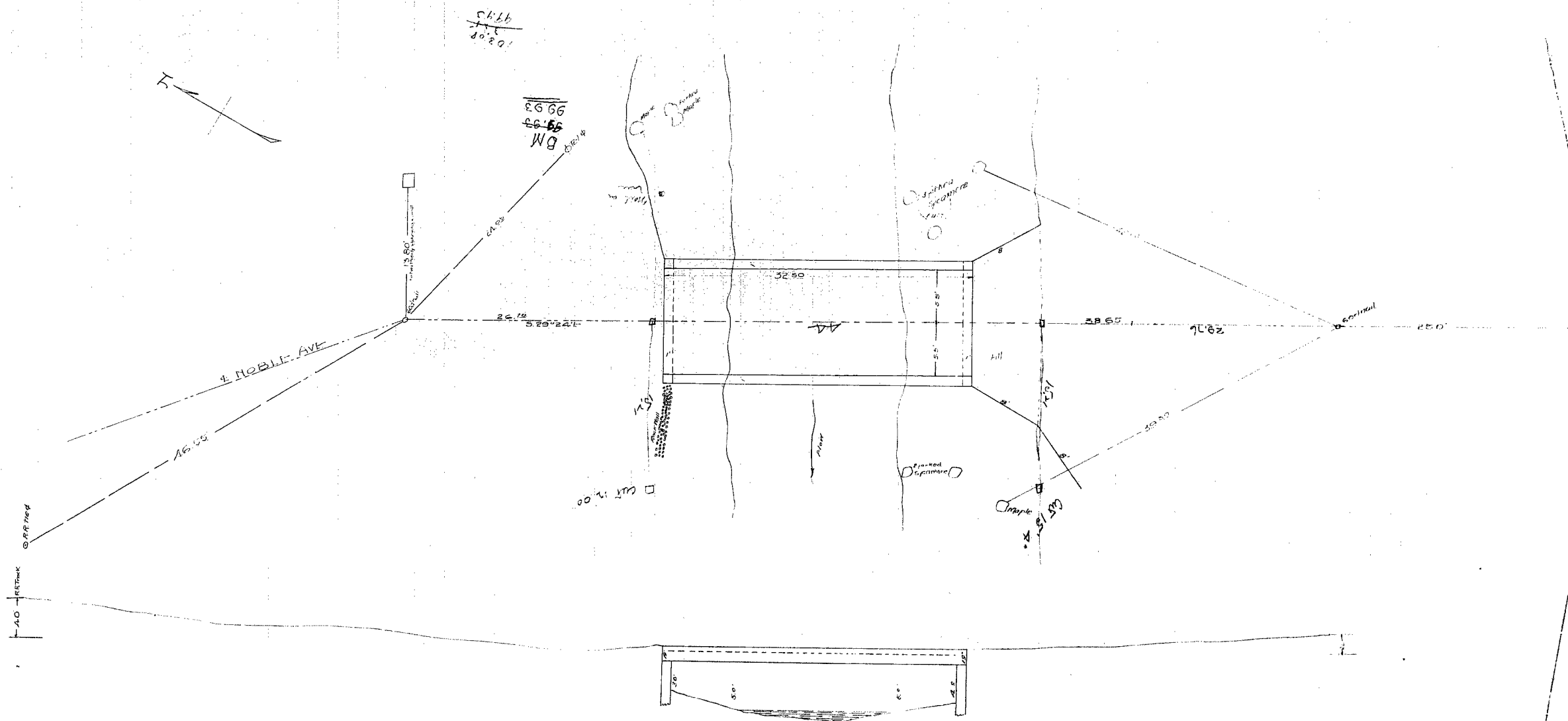
May 1915



MAP
showing location of proposed road connecting
OAKLAND-SAN JOSE ROAD and STATE HIGHWAY
in the town of MILPITAS

Scale 30' = 1"

Surveyed May 19, 1915
J.L. RYDER, Co. Sur. Santa Clara Co., Ca.



PLAN and CROSS SECTION
 OF
 PRESENT BRIDGE over PENITENCIA CREEK
 on NOBLE AVE
 Scale: 5' = 1" J.L. RYDER, CO SUR