

PARCEL MAP NO. 317

This is a copy of a map on file in the Recorder's Office of Alameda County. No representation of any kind is made as to the accuracy of the original official map from which this is copied, and this copy carries with it no representation of any kind other than that it is a copy.

Any questions concerning this map should be directed to the Recorder's Office of Alameda County.
DIETERICH POST COMPANY

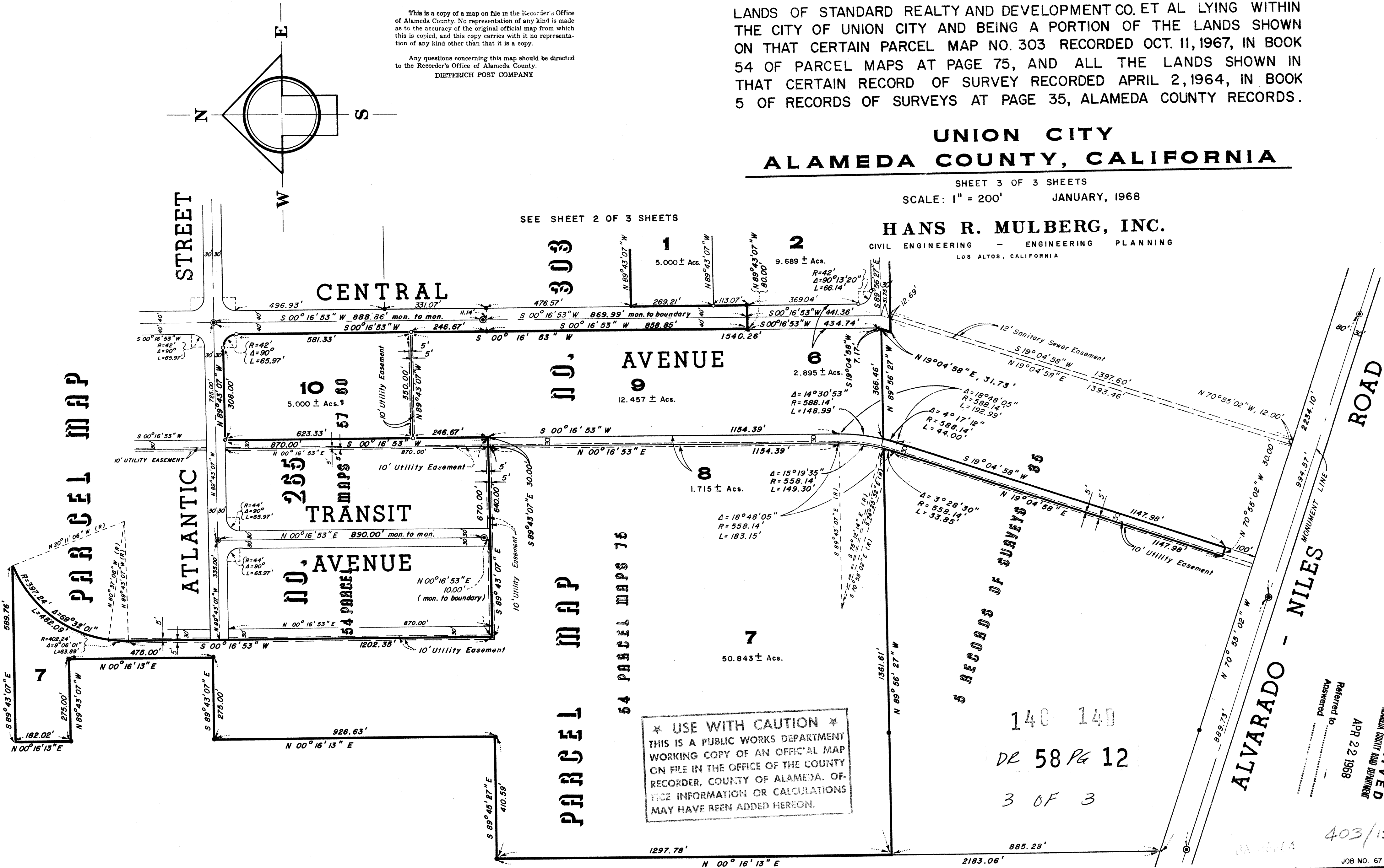
LANDS OF STANDARD REALTY AND DEVELOPMENT CO. ET AL LYING WITHIN THE CITY OF UNION CITY AND BEING A PORTION OF THE LANDS SHOWN ON THAT CERTAIN PARCEL MAP NO. 303 RECORDED OCT. 11, 1967, IN BOOK 54 OF PARCEL MAPS AT PAGE 75, AND ALL THE LANDS SHOWN IN THAT CERTAIN RECORD OF SURVEY RECORDED APRIL 2, 1964, IN BOOK 5 OF RECORDS OF SURVEYS AT PAGE 35, ALAMEDA COUNTY RECORDS.

UNION CITY
ALAMEDA COUNTY, CALIFORNIA

SHEET 3 OF 3 SHEETS
SCALE: 1" = 200' JANUARY, 1968

HANS R. MULBERG, INC.
CIVIL ENGINEERING - ENGINEERING PLANNING
LOS ALTOS, CALIFORNIA

SEE SHEET 2 OF 3 SHEETS



58/10-12 PM

PF M 31

403/1503C

BA36264 FILED APRIL 4 1968 BOOK 58 PAGE