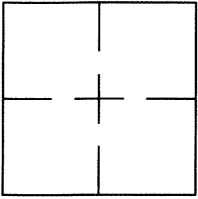


CORNER RECORD

Document Number CR 7307City of CASTRO VALLEYCounty of ALAMEDA, CaliforniaBrief Legal Description WELL MONUMENT LOCATED WITHIN SEPTEMBER CT.

CORNER RECORD

Government Corner ☐ Control ☐
 Meander ☐ Property ☒
 Rancho ☐ Other ☐
 Date of Survey 3/12/2015

COORDINATES
(Optional)

N. 2087919±
 E. 6100264±
 Zone _____ Datum _____
 Elev. _____

Corner — Left as found ☒ Found and tagged ☐ Established ☐ Reestablished ☐ Rebuilt ☐

Identification and type of corner found: Evidence used to identify or procedure used to establish of reestablish the corner:
FOUND 3/8" PIN WITH "X" IN WELL MONUMENT LOCATED WITHIN SEPTEMBER CT.

BETWEEN 17214 AND 17320 MAYFLOWER DR.

THIS POINT WAS FOUND IN GOOD CONDITION AFTER A CONSTRUCTION PROJECT IN THE VICINITY

A description of the physical condition of the monument as found and as set or reset:
FOUND AND SET POINTS AS SHOWN ON PAGE 2.

THESE TIES ARE FOR THE PURPOSE OF PERPETUATING THE FOUND MONUMENTATION.

NO CLAIM IS MADE AS TO THE RELATIONSHIP OF THE POINTS OR LINES SHOWN HEREON TO TRUE BOUNDARY LOCATIONS.

SURVEYOR'S STATEMENT

This Corner Record was prepared by me or under my direction in conformance with the Land Surveyors' Act on April 8, 2015.

Signed Alan E. McKean L.S. Number R.C.E. 19965
 Alan E. McKean Exp. 9/30/15

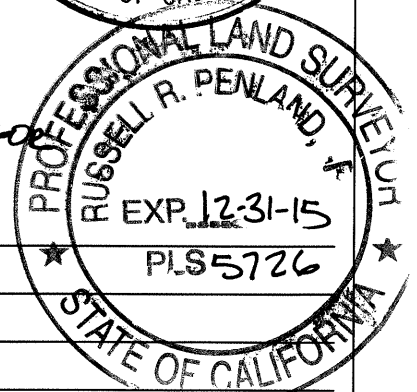
COUNTY SURVEYOR'S STATEMENT

This Corner Record was received 5-18-15 and examined

and filed 7-28-2015

Signed [Signature] Title COUNTY SURVEYOR

County Surveyor's Comment SEE PRE-CONSTRUCTION CR 6561



SPEC. 2254
POST



SCALE: 1"=30'

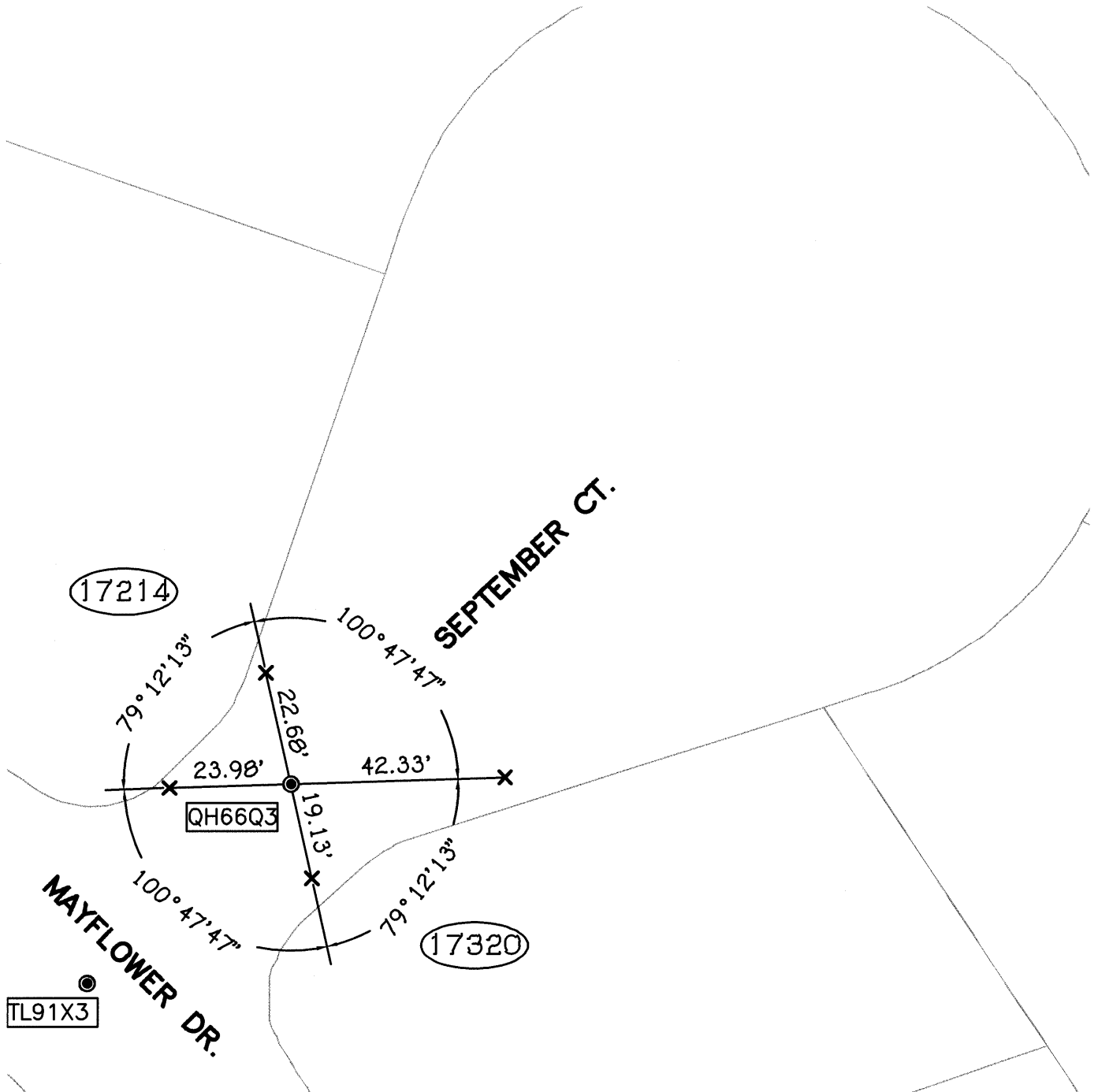
LEGEND

● FOUND 3/8" PIN WITH "X" IN MONUMENT WELL

✕ FOUND CUT CROSS IN CURB

AA### ALAMEDA COUNTY MONUMENT ID

(19592) STREET ADDRESS



TL91X3