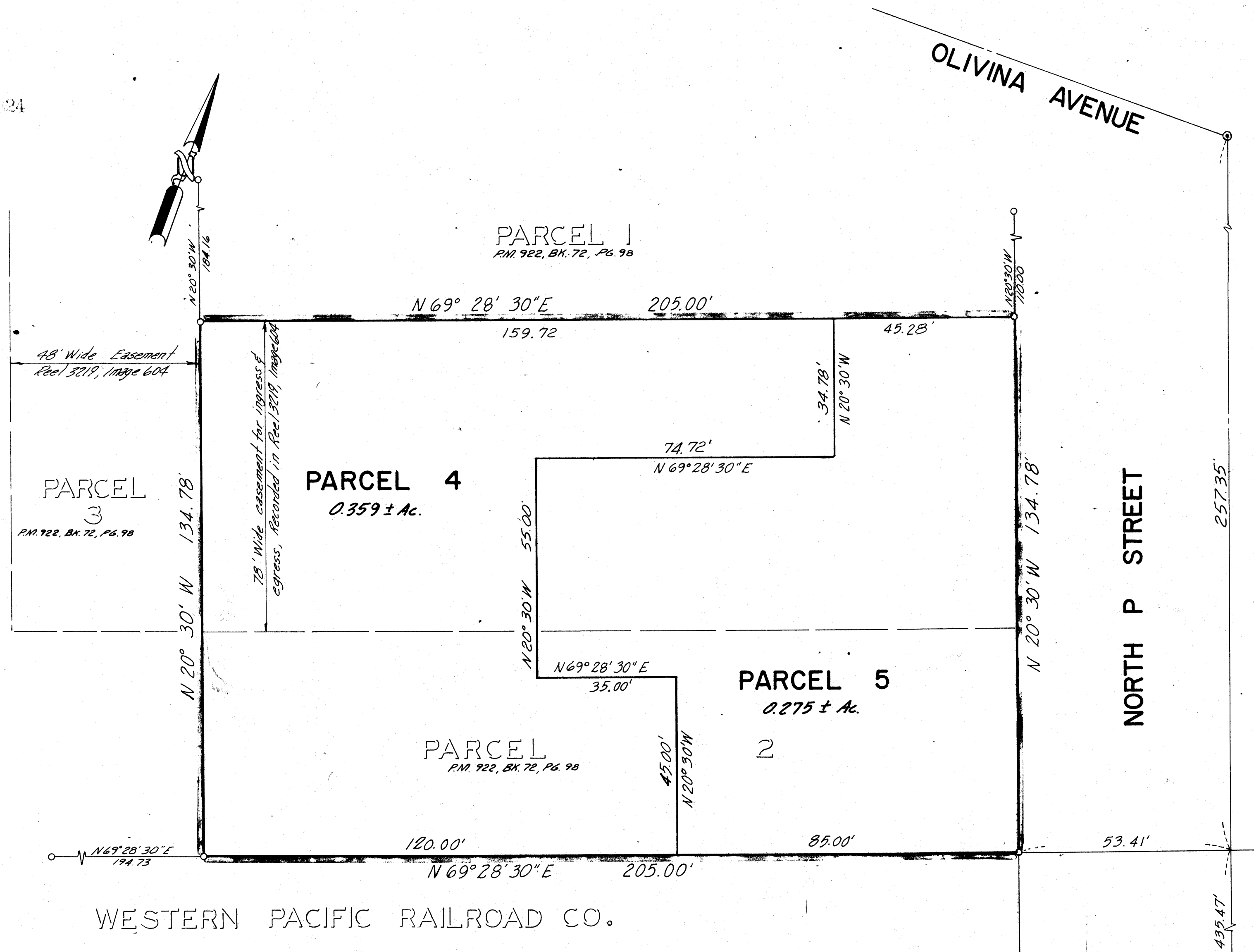


73-104824



★ USE WITH CAUTION ★
THIS IS A PUBLIC WORKS DEPARTMENT
WORKING COPY OF AN OFFICIAL MAP
ON FILE IN THE OFFICE OF THE COUNTY
RECORDER, COUNTY OF ALAMEDA. OF-
FICE INFORMATION OR CALCULATIONS
MAY HAVE BEEN ADDED HEREON.

73-104824

LEGEND

⊙ City Monument
○ Iron Pipe

26B 25D

**PARCEL MAP
No. 1181**

BEING ALL OF PARCEL 2 OF
PARCEL MAP No. 922 CITY OF
LIVERMORE, COUNTY OF ALA-
MEDA, CALIFORNIA.

SURVEYOR'S CERTIFICATE

This map was prepared by me or under my direction and was compiled from record data and is based upon a field survey in conformance with the requirements of the Subdivision Map Act at the request of LEON MAYER in APRIL, 1973. I hereby certify that it conforms to the approved tentative map and the conditions of approval thereof; that all provisions of applicable state law and local ordinances have been complied with.

Edward M. King
Edward M. King
L.S. 3344

CITY ENGINEER'S CERTIFICATE

This map has been examined this 31ST day of MAY, 1973, for conformance with the requirements of Section 11575 of the Subdivision Map Act.

Daniel J. Lee
Daniel J. Lee, City Engineer

By Deputy

RECORDER'S CERTIFICATE

Filed this 2ND day of AUGUST, 1973, at 11:00 A.M. in Book 80 of Maps at page 1 at the request of ASSOCIATED PROFESSIONS, INC.

JACK G. BLUE
County Recorder

By Deputy

Donna J. Belandi

73-104824 \$ 5.00

BASIS OF BEARING

The bearing N 20° 30' W of the westerly line of North P Street as shown on that certain Parcel Map No. 922 recorded in Book 72, Page 98, Alameda County Records, California, was used as a basis of bearing shown on this map.

ASSOCIATED PROFESSIONS INC.

ENGINEERS-ARCHITECTS-SURVEYORS-PLANNERS
LIVERMORE CALIFORNIA

SCALE 1"=20'

MAY 1973

SHEET 1 OF 1 SHEETS

JOB NO. 73-65

FILED 8-2-73 80/1
Map Bk. 80 Pa 1