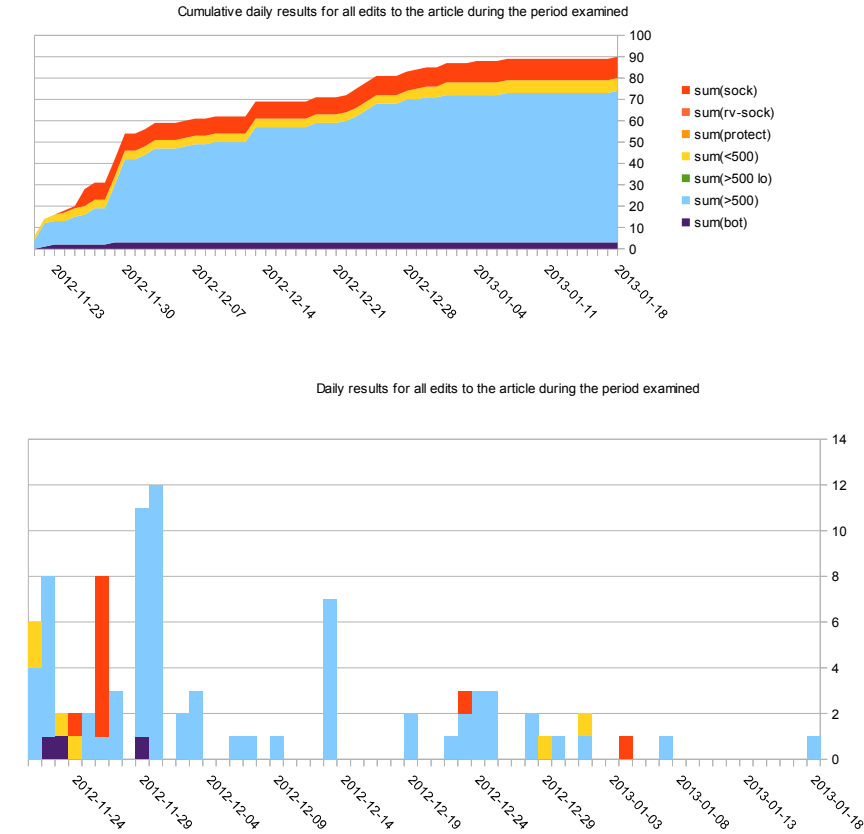


Edits to the 2012 Tel Aviv bus bombing article between 2012-11-21 (article start) and 2013-01-18 were categorized as follows

bot	edits by bots
>500	edits by accounts/IPs with an edit count > 500
>500 lo	edits by accounts with an edit count > 500 made while logged out i.e. as IPs (see non-sock IP details sheet)
<500	edits by accounts/IPs with an edit count < 500 (see non-sock IP details sheet)
protect	edits related to article protection
rv-sock	reverts of socks or made on the basis that the edits were by socks according to the edit summary
sock	edits by socks (see sock details sheet)

The article was not protected during the period examined.

Daily results

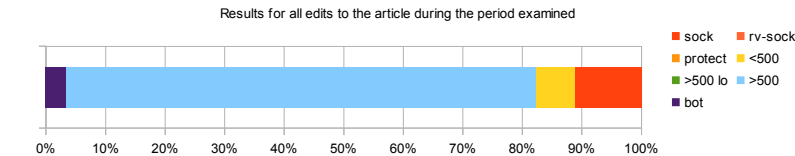


Summarized results

Results for all edits to the article during the period examined

Category	bot	>500	>500 lo	<500	protect	rv-sock	sock	sum=
All edits	3	71	0	6	0	0	10	90
Percentage	3.3%	78.9%	0.0%	6.7%	0.0%	0.0%	11.1%	

sock related edits= 11.1% i.e. protect, rv-sock, sock edits
Probability of an edit being made by a sock rather than an apparently new non-sock = 62.5% i.e. sock / (>500 lo + <500 + sock)



How often is assuming good faith misplaced for apparently new editors in the ARBPIA topic area ?

It is possible to calculate the probability of an edit by an apparently new account/IP being a sock's edit by comparing the following

- Number of edits by socks
- Number of edits by registered accounts/IPs with < 500 edits
- Number of edits by IPs that look like new accounts because they have < 500 edits but are in fact edits by accounts with an edit count > 500 made while logged out.

