

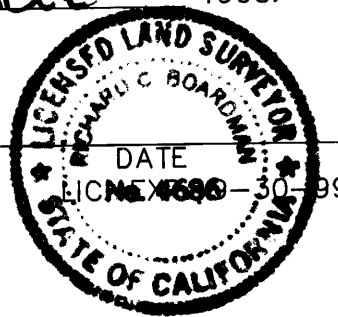
RECORDER'S STATEMENT:
FILED THIS 21st DAY OF November, 1995,
AT 1:54 P.M. IN BOOK 3 OF RECORD OF
SURVEY MAPS AT PAGE 34 AT THE REQUEST
OF TRIAD/HOLMES ASSOCIATES.

INSTRUMENT NO. : 6095
FEE : \$5.00

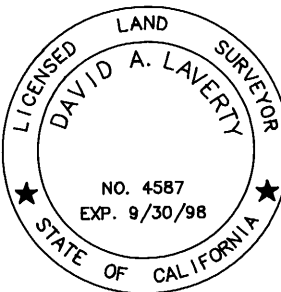
RENN NOLAN
MONO COUNTY RECORDER
BY : Solene R Way
DEPUTY COUNTY RECORDER

COUNTY SURVEYOR'S STATEMENT:
THIS MAP HAS BEEN EXAMINED IN ACCORDANCE WITH
SECTION 8766 OF THE LAND SURVEYORS' ACT THIS
20th DAY OF NOVEMBER, 1995.

COUNTY SURVEYOR
Richard Boardman
RICHARD BOARDMAN
L.S. 4686



SURVEYOR'S STATEMENT:
THIS MAP CORRECTLY REPRESENTS A SURVEY MADE
BY ME OR UNDER MY DIRECTION IN CONFORMANCE
WITH THE REQUIREMENTS OF THE LAND SURVEYORS'
ACT AT THE REQUEST OF BOB BAKER ENTERPRISES,
INC. IN SEPTEMBER, 1995.



David Laverty Nov 6 1995
DAVID LAVERTY DATE
L.S. 4587 LIC. EXP. 9-30-98

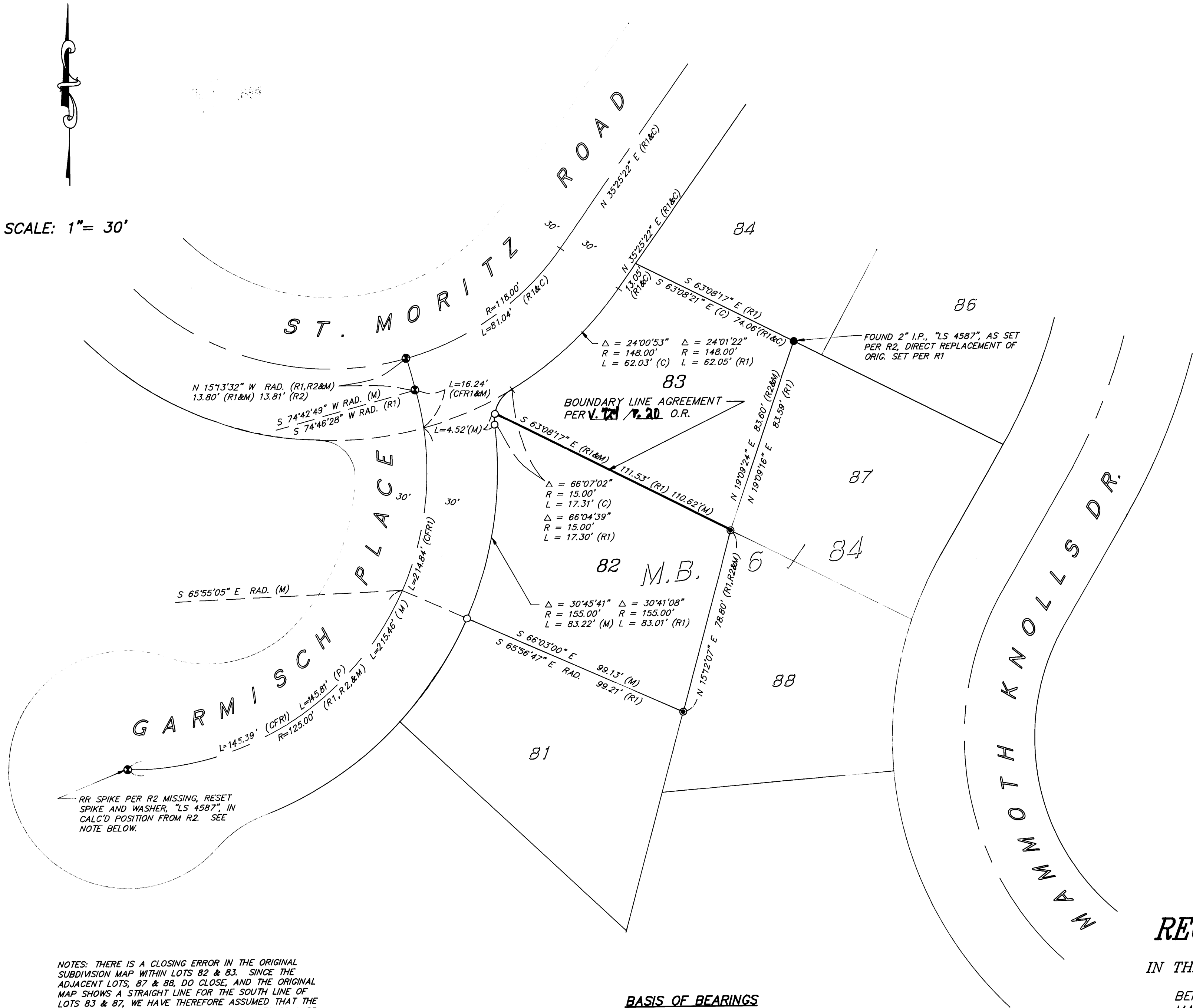
LEGEND

- SET 5/8" REBAR WITH CAP, "L.S. 4587"
- FOUND MONUMENT AS NOTED
- ⊙ FOUND CL RAILROAD SPIKE AS SET PER MB 6/84
- ⊙ FOUND 5/8" R&C, "LS 4587" AS SET PER CORNER
RECORD 3S27-27-33
- R1 - RECORD INFORMATION MB 6/84
- R2 - RECORD INFORMATION CORNER RECORD 3S27-27-33

RECORD OF SURVEY NO. 36 - 118

IN THE TOWN OF MAMMOTH LAKES, MONO COUNTY, CALIFORNIA

BEING A SURVEY OF THE COMMON LINE BETWEEN LOTS 82 AND 83,
MAMMOTH KNOLLS, PER MAP RECORDED IN MAP BOOK 6, PAGE 84.



SCALE: 1"= 30'

NOTES: THERE IS A CLOSING ERROR IN THE ORIGINAL
SUBDIVISION MAP WITHIN LOTS 82 & 83. SINCE THE
ADJACENT LOTS, 87 & 88, DO CLOSE, AND THE ORIGINAL
MAP SHOWS A STRAIGHT LINE FOR THE SOUTH LINE OF
LOTS 83 & 87, WE HAVE THEREFORE ASSUMED THAT THE
BEARING FOR THE COMMON LINE BETWEEN LOTS 82 & 83
IS CORRECT ON THE ORIGINAL MAP AND THE ERROR IS
IN THE FAILURE TO CUT OFF THE COMMON LINE AT THE
15 FOOT RADIUS RIGHT-OF-WAY CURVE.
THERE IS AN ERROR IN THE SHOWN MEASURED LENGTH
OF THE CENTERLINE OF GARMISCH WAY ON R2. THE
POSITION OF THE POINTS SET ON THE RIGHT-OF-WAY
PER R2 WERE ADJUSTED ON THIS SURVEY.

BASIS OF BEARINGS

THE BASIS OF BEARINGS FOR THIS MAP IS THE CENTERLINE
OF GARMISCH PLACE, SHOWN HEREON AS N 15°13'32" W,
PER MAP BOOK 6, PAGE 84.