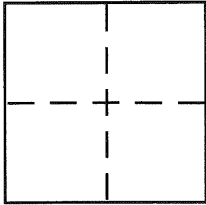


CORNER RECORDDocument Number 1338City of OAKLAND County of ALAMEDA, CaliforniaBrief Legal Description LOT 2809, THORNDAL (18M68)**CORNER TYPE**

Government Corner ☐ Control ☐
 Meander ☐ Property ☒
 Rancho ☐ Other ☐
 Date of Survey APRIL 15, 2000

COORDINATES (Optional)

N. _____
 E. _____
 Zone _____ NAD27 ☐ NAD83 ☐
 NAD83 Epoch _____
 Elev. _____
 Vert. Datum: NGVD29 ☐ NAVD88 ☐
 Meas. Units: Metric ☐ Imperial ☐

Corner - Left as found ☐ Found and tagged ☐ Established ☒ Reestablished ☐ Rebuilt ☐

Identification and type of corner found: Evidence used to identify or procedure used to establish or reestablish the corner:

FOUND CONCRETE MONUMENT WITH PIN PER (18M68)

A description of the physical condition of the monument as found and as set or reset:

SET 5/8" REBAR WITH PLASTIC CAP, STAMPED "LS 4961"
SET P.K. NAIL WITH BRASS TAG, STAMPED "LS 4961"

SURVEYOR'S STATEMENT

This Corner Record was prepared by me or under my direction in conformance with the Land Surveyor's Act on APRIL 22 2000.

Signed Robert J. Brunel P.L.S. or R.C.E. No. 4961

COUNTY SURVEYOR'S STATEMENT

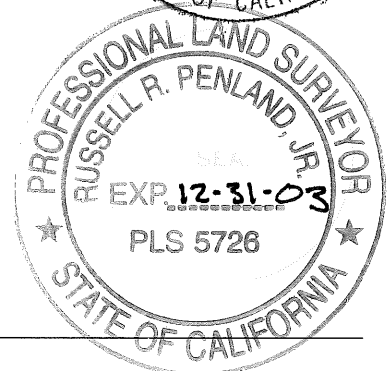
This Corner Record was received 4-27-2000

and examined and filed 6-6-2000

Signed Russell R. Penland, Jr. P.L.S. or R.C.E. No. 5726

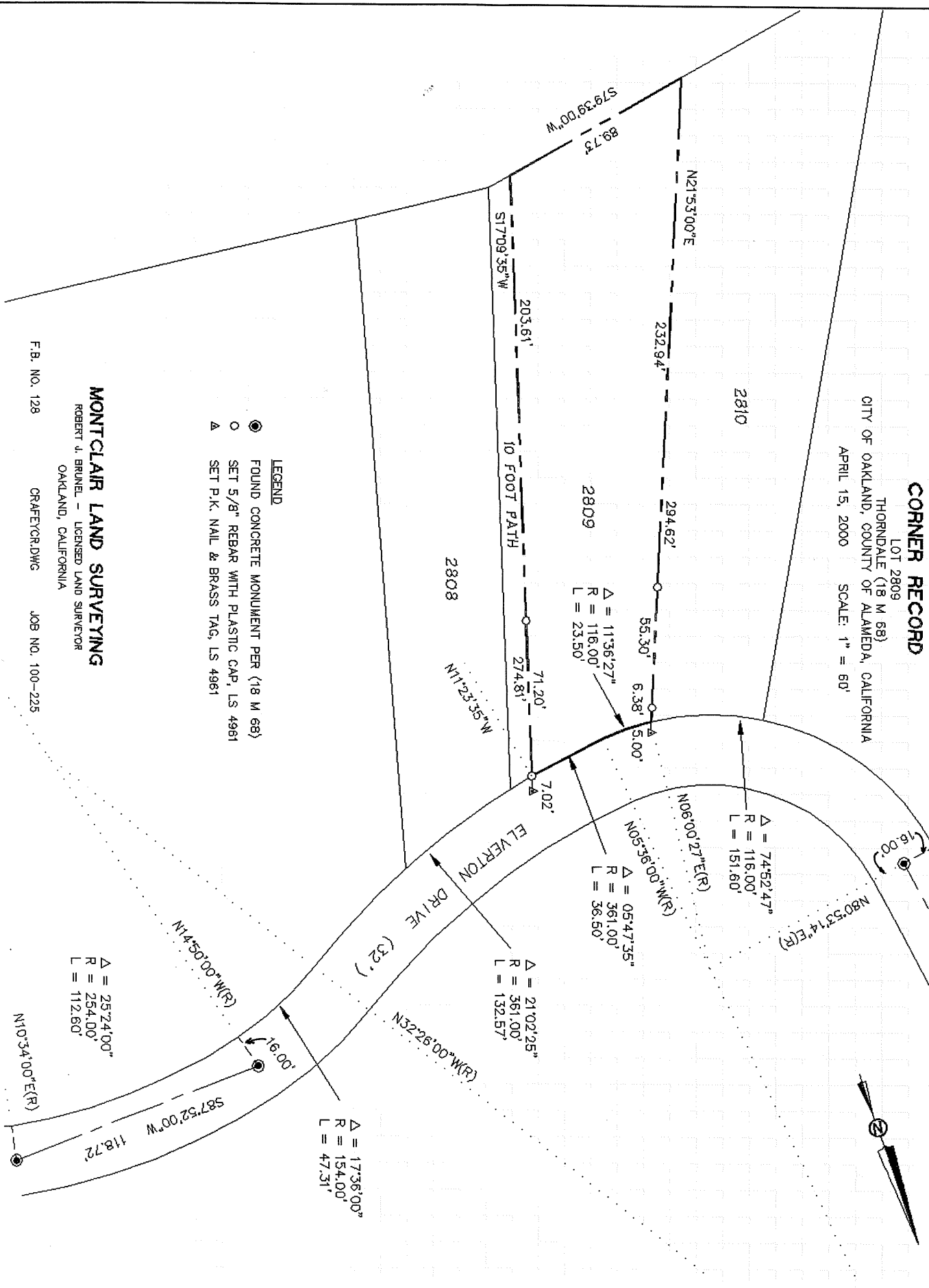
Title DEPUTY COUNTY SURVEYOR

County Surveyor's Comment _____



CORNER RECORD

LOT 2809
THORNDALE (18 M 68)
CITY OF OAKLAND, COUNTY OF ALAMEDA, CALIFORNIA
APRIL 15, 2000 SCALE: 1" = 60'



MONTCLAIR LAND SURVEYING

ROBERT J. BRUNEL - LICENSED LAND SURVEYOR
OAKLAND, CALIFORNIA

F.B. NO. 128

CRAFTYCR.DWG

JOB NO. 100-225