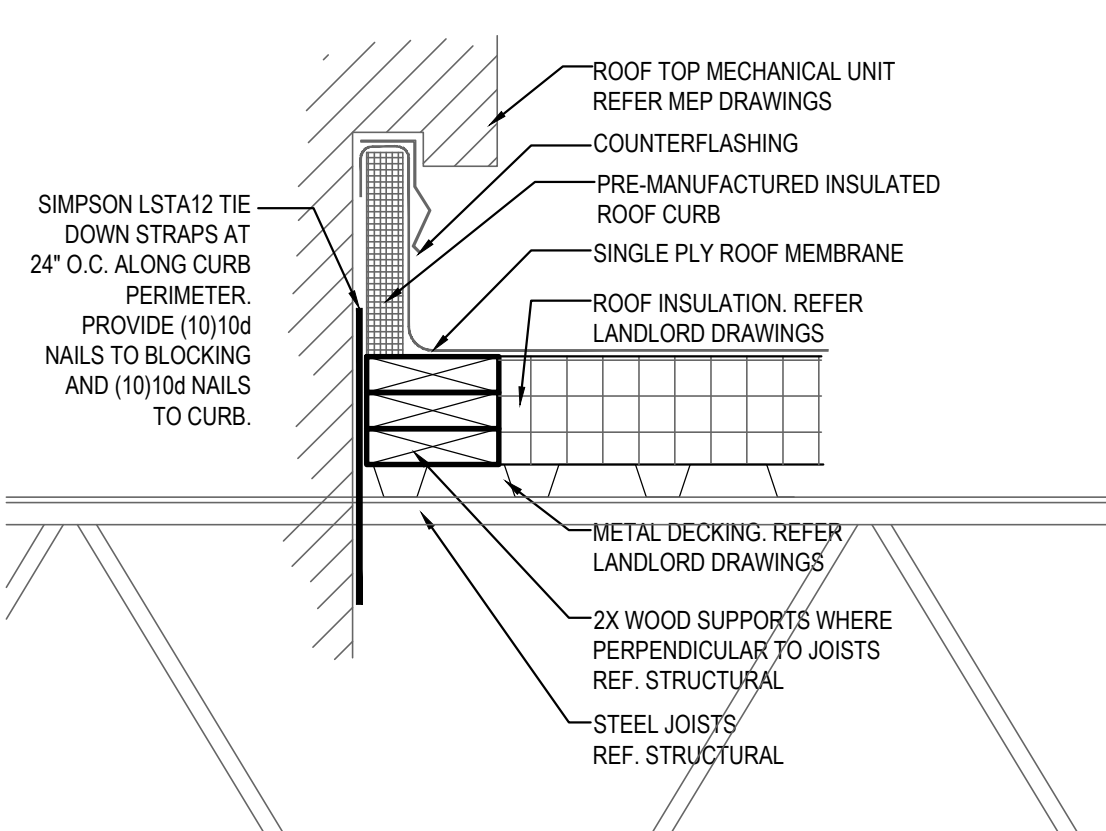
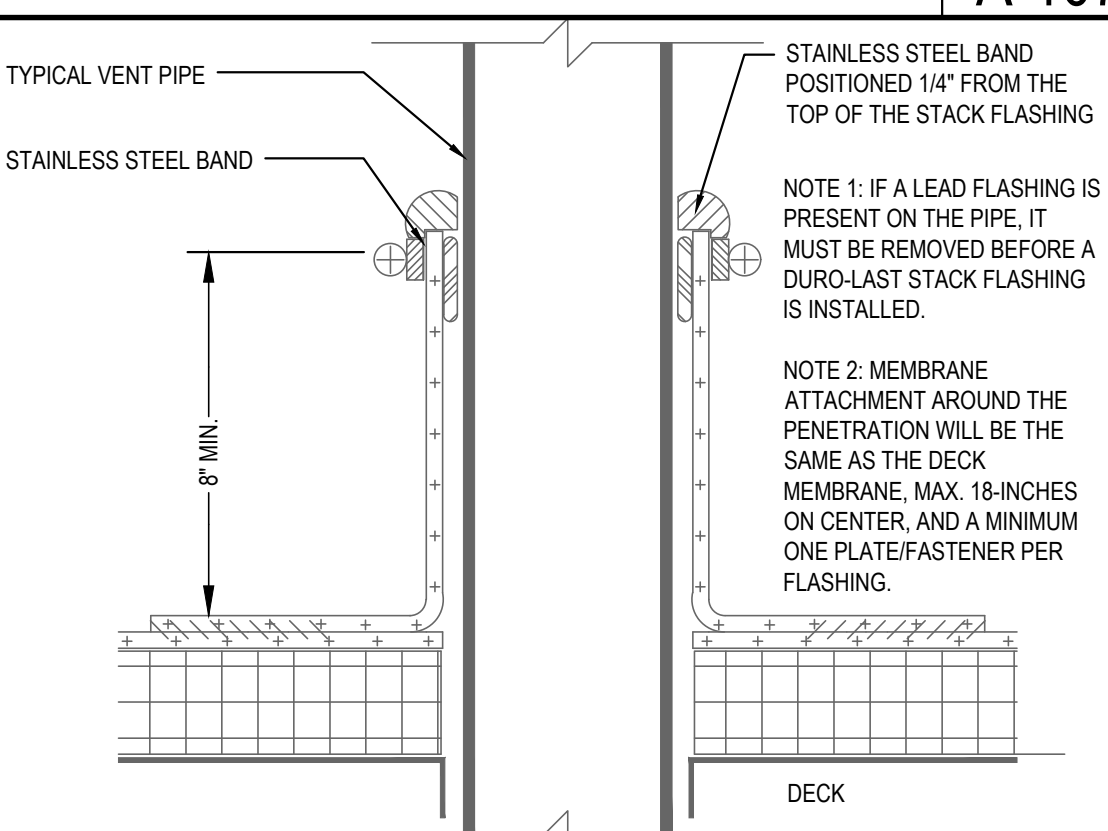

ROOF WALKWAY PAD DETAIL	4
Scale= NTS	A-107
NOT USED	16
Scale= 1/4" = 1'-0"	A-107
NOT USED	15
Scale= NTS	A-107
	
MECHANICAL CURB DETAIL	18
Scale= NTS	A-107
NOT USED	14
Scale= 3" = 1'-0"	A-107
NOT USED	17
Scale= NTS	A-107
PLUMBING VENT DETAIL	13
Scale= NTS	A-107

ROOF PLAN NOTES:

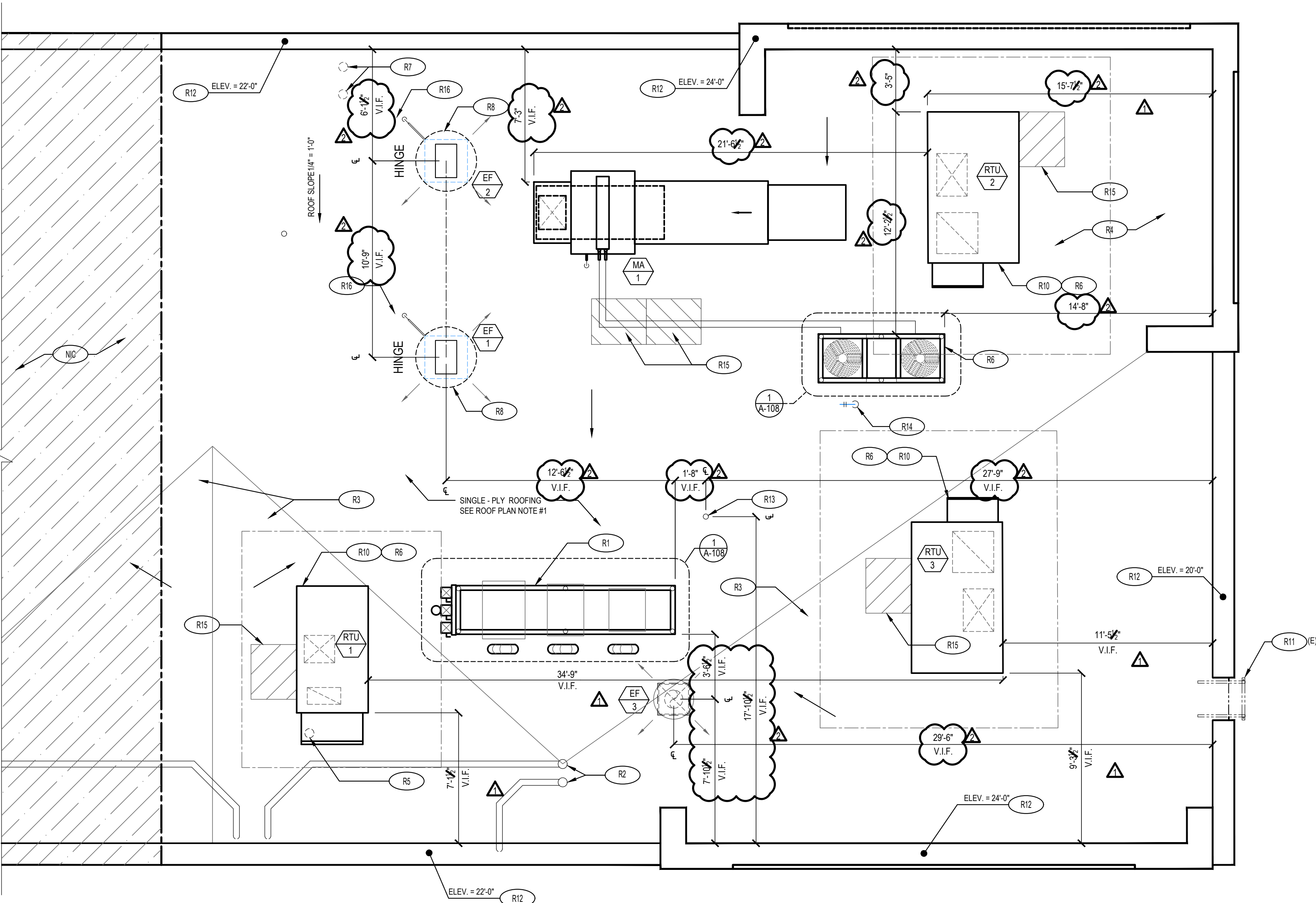
- EXISTING ROOFING BY LANDLORD.
- 4'-6" INDICATES APPROXIMATE ELEVATION OF THE TOP OF ROOF PLYWOOD SHEATHING AT PLYWOOD CRICKET. SEE TRUSS DRAWINGS FOR ACTUAL ROOF SLOPE. ALL ROOF ELEVATIONS ARE GIVEN FROM TOP OF INTERIOR CONCRETE FLOOR SLAB (U.O.N.). WHEN FLOOR SLAB STEPS, ELEVATIONS ARE REFERENCED FROM THE HIGHEST FINISHED FLOOR.
- ANY PROJECTION THROUGH ROOF SHALL BE DETAILED PER THE SINGLE PLY ROOFING MANUFACTURER'S RECOMMENDED DETAILS.
- ALL EXHAUST FANS AND AIR CONDITIONING EQUIPMENT DESIGNATIONS ARE TAKEN FROM MECHANICAL DRAWINGS.
- NOT USED.
- CONTRACTOR SHALL CONFIRM THAT ALL AREAS OF ROOF ARE PROVIDED WITH POSITIVE DRAINAGE.
- ALL ROOF PENETRATIONS FOR PLUMBING VENTS, POWER CONDUITS, ETC. SHALL BE FLASHED PER BUILDING SPECIFICATIONS AND DETAILS. VENTS SHALL BE AT LEAST 10'-0" HORIZONTAL OR 3'-0" ABOVE OUTSIDE AIR INTAKES (A/C UNITS, MAKE-UP AIR).
- CONTRACTOR BE RESPONSIBLE FOR COORDINATION OF SIZES AND LOCATIONS OF ROOF OPENINGS (VENTS, DUCTS, ETC.), PLATFORMS, BASES ETC. COORDINATE SIZES OF MECHANICAL EQUIPMENT PLATFORMS, BASES, ROOF EQUIPMENT PLATFORMS AND OPENINGS SHOWN ON DRAWINGS WITH EQUIPMENT BEING SUPPLIED. SEE TYPICAL DETAILS ON THIS SHEET ALSO. COORDINATE INSTALLATION OF LIGHTING, POWER, CONVENIENCE OUTLETS ETC.
- FOR ALL STRUCTURAL FRAMING MEMBERS, SIZES, AND ADDITIONAL INFORMATION, SEE STRUCTURAL L.L. DRAWINGS.
- PROVIDE ROOF CRICKET AT MECHANICAL EQUIPMENT TO ASSURE POSITIVE ROOF DRAIN.
- ALL ROOF EQUIPMENT TO BE SCREENED FROM PUBLIC VIEW.
- ROOFTOP EQUIPMENT TO BE LOCATED AT LEAST 42" MINIMUM FROM TOWERS FOR SERVICING
- PROVIDE SERVICE PAD AT EACH UNIT ONLY AT SERVICE ACCESS DOOR
- ALL GAS PIPING ON ROOF TO BE PAINTED SAFETY YELLOW
- ALL NEW PENETRATIONS IN ROOF SHALL BE PERFORMED BY LANDLORD'S BONDED ROOFING CONTRACT

ROOF PLAN KEYNOTES:

- R1 REF: EQUIPMENT RACK (SEE SHEET A-108)
- R2 4" ROOF DRAIN AND OVERFLOW DRAIN
- R3 CRICKET TO ASSURE POSITIVE ROOF DRAINAGE
- R4 SINGLE - PLY ROOFING SEE ROOF PLAN NOTE #1
- R5 GALV RIGID METAL CONDUIT & WEATHERHEAD AND PULL STRING FOR SATELLITE CABLE. EXACT LOCATION ON ROOF TO BE COORDINATED WITH PANDA PROJECT MANAGER AND SERVICE PROVIDER. REFER TO E-104/A-108 FOR SIZE AND INSTALLATION.
- R6 ROOF TOP MECHANICAL UNIT SEE MECHANICAL DRAWING
- R7 WATER HEATER VENT - SEE MEP PLANS. OFFSET VENTS AS REQUIRED TO MAINTAIN MIN. 10'-0" AWAY FROM AIR INTAKE SYSTEMS ON EQUIPMENT.
- R8 EXHAUST FAN
- R10 MECHANICAL UNIT CURB. SEE DETAIL 18/A-107
- R11 EXISTING ROOF ACCESS LADDER
- R12 TOP OF EXISTING PARAPET
- R13 PLUMBING VENT 13 A-107
- R14 WEATHER PROOF HYDRANT
- R15 PROVIDE WALK-WAY PAD AS SHOWN, REFERENCE DETAIL 4/A-107
- R16 POWER SUPPLY LOCATION FOR ROOFTOP EXHAUST FANS FOR KITCHEN HOOD
- R17 ATTIC/ROOF CONVECTION VENT WITH WEATHER CAP AND INSECT SCREEN
- R18 4" ROOF DRAIN, REFERENCE PLUMBING DRAWINGS
- R19 OVERFLOW SCUPPER, REFERENCE DETAIL 14/A-107

NOTE:
GC TO COORDINATE ALL CURBS WITH L.L. AND CAPTIVAIRE.
L.L. TO CAP ALL OPEN CURBS AND OPENINGS.
GC TO USE L.L. ROOFING SUBCONTRACTOR FOR ALL NEW ROOFING OPENINGS / REPAIRS

NOTE:
1. ALL RTU DIMENSIONS ARE FOR REFERENCE ONLY AND MUST BE FIELD VERIFIED BEFORE INSTALLATION. GC TO COORDINATE ALL RTU CURBS LOCATIONS WITH EXISTING BUILDING STRUCTURE OPENINGS FOR PROPER INSTALLATION.
GC TO COORDINATE CURB HEIGHT WITH FINISH ROOF. REQUIRED CLEAR SPACE FROM FINISHED ROOF TO BOTTOM OF UNIT IS **8" MIN.**



ROOF PLAN

Scale= 1/4" = 1'-0"

1

A-107



PANDA RESTAURANT GROUP INC.
1683 Walnut Grove Ave.
Rosemead, California
91770
Telephone: 626.799.9898
Facsimile: 626.372.8288

All ideas, designs, arrangement and plans indicated or represented by this drawing are the property of Panda Express Inc. and were created for use on this specific project. None of these ideas, designs, arrangements or plans may be used by or disclosed to any person, firm, or corporation without the written permission of Panda Express Inc.

REVISIONS:

- 1 07.10.2020 COUNTY COMMENTS
- 2 09.15.2020 ISSUE FOR BID

ISSUE DATE:

- 1 03.26.2020 ISSUE FOR PERMIT
- 2 09.15.2020 ISSUE FOR BID

DRAWN BY: JDV

PANDA PROJECT #: - S4-20-D7530
C&P PROJECT #: - 2190851



1925 Prospect Ave. Orlando, FL 32814
P (407) 661-9100
F (407) 661-9101
www.culacci.com
Florida Certified Consultant AAA CR00026

09.15.2020

PANDA EXPRESS

TRUE WARM AND WELCOME 2300
1544 WEST BRANDON BOULEVARD
BRANDON, FL 33511

A-107

ROOF PLAN

TRUE WARM & WELCOME 2300 R2