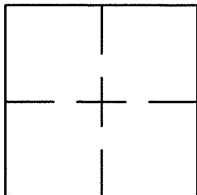


## CORNER RECORD

Document Number CR 8882City of EDEN TOWNSHIPCounty of ALAMEDA, CaliforniaBrief Legal Description PIN MONUMENT LOCATED WITHIN THE INTERSECTION OF SELBORNE DR AND GRAMERCY DR.

## CORNER RECORD

Government Corner ☐ Control ☒  
 Meander ☐ Property ☐  
 Rancho ☐ Other ☐  
 Date of Survey 8/22/16

## COORDINATES

(Optional)

N. 2083971  
 E. 6095739  
 Zone \_\_\_\_\_ Datum \_\_\_\_\_  
 Elev. \_\_\_\_\_

Corner — Left as found ☒ Found and tagged ☐ Established ☐ Reestablished ☐ Rebuilt ☐

Identification and type of corner found: Evidence used to identify or procedure used to establish of reestablish the corner:  
FOUND PIN IN CONCRETE IN MONUMENT WELL.

THIS POINT WAS REFERENCED PRIOR TO A CONSTRUCTION PROJECT IN THE VICINITY.

A description of the physical condition of the monument as found and as set or reset: \_\_\_\_\_

FOUND AND SET POINTS AS SHOWN ON PAGE 2.

THE TIES SHOWN HEREON ARE FOR THE PURPOSE OF PERPETUATING FOUND MONUMENTATION.

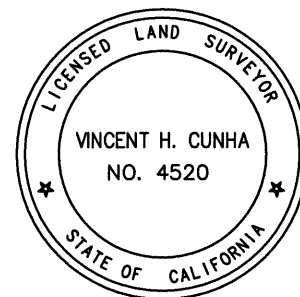
NO CLAIM IS MADE AS TO THE RELATIONSHIP OF THE POINTS OR LINES SHOWN HEREON TO

TRUE BOUNDARY LOCATIONS.

## SURVEYOR'S STATEMENT

This Corner Record was prepared by me or under my direction in conformance with  
 the Land Surveyors' Act on AUGUST 24, 2016.

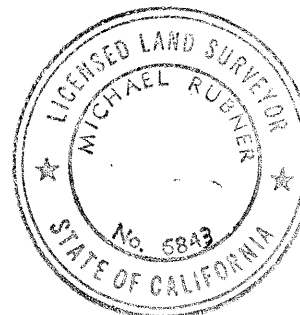
Signed VINCENT H. CUNHA L.S. Number LS 4520



## COUNTY SURVEYOR'S STATEMENT

This Corner Record was received 31 AUGUST 2016 and examined  
 and filed 7 OCTOBER 2016.

Signed Michael Rbn Title COUNTY SURVEYOR



County Surveyor's Comment \_\_\_\_\_

SPEC-2303-PRE

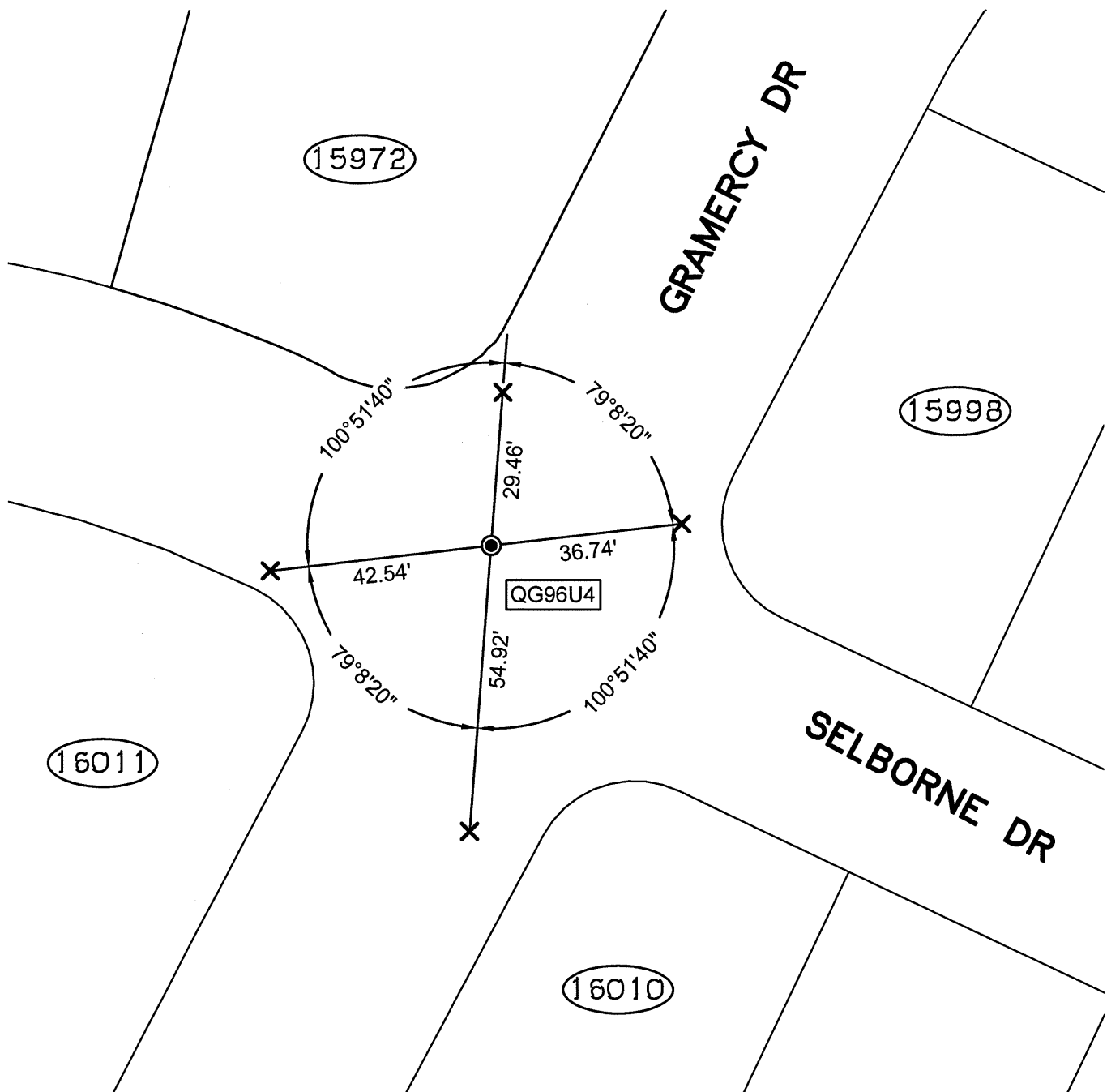
SCALE: 1"=30'

## LEGEND

- FOUND IRON PIN IN CONCRETE IN MONUMENT WELL
- ⊗ FOUND CUT CROSS IN WALK
- ✕ FOUND CUT CROSS IN CURB
- ⊗ FOUND MAG AND SHINER
- FOUND REBAR & BLANK CAP

AA###A# ALAMEDA COUNTY MONUMENT ID

19592 REFERENCE STREET ADDRESS



216129-Selborne-CR06