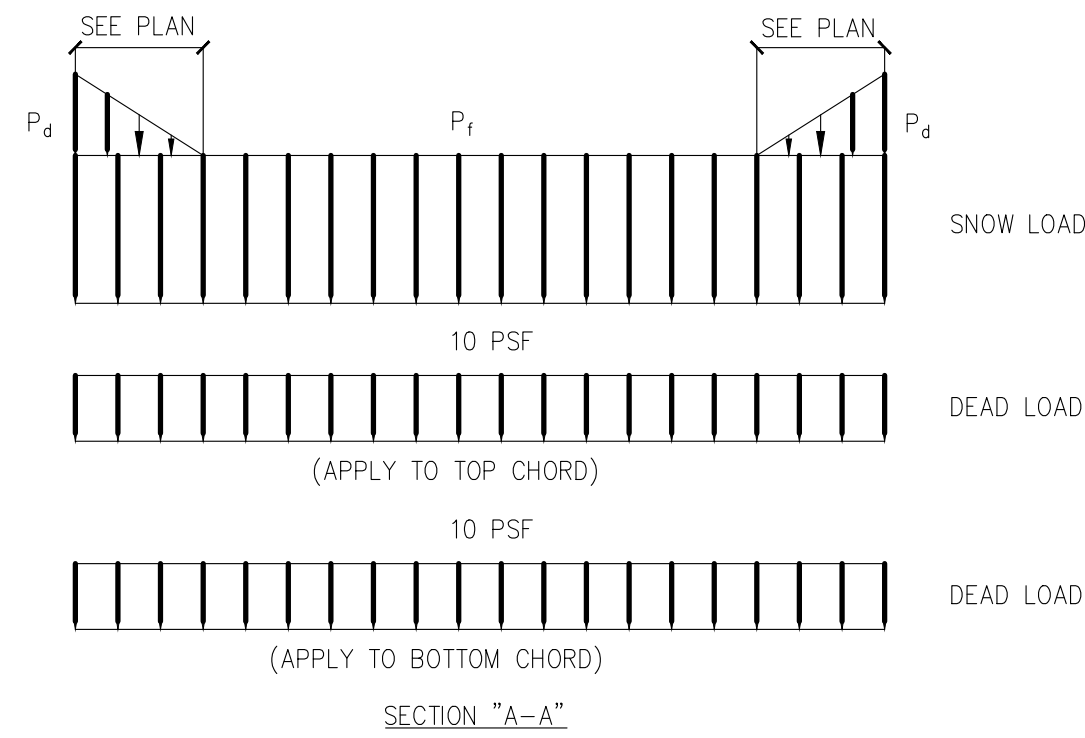


$P_d = 23.7$ PSF
 $P_d = 18.8$ PSF
 $P_t = 10$ PSF (FOR ENTIRE ROOF)

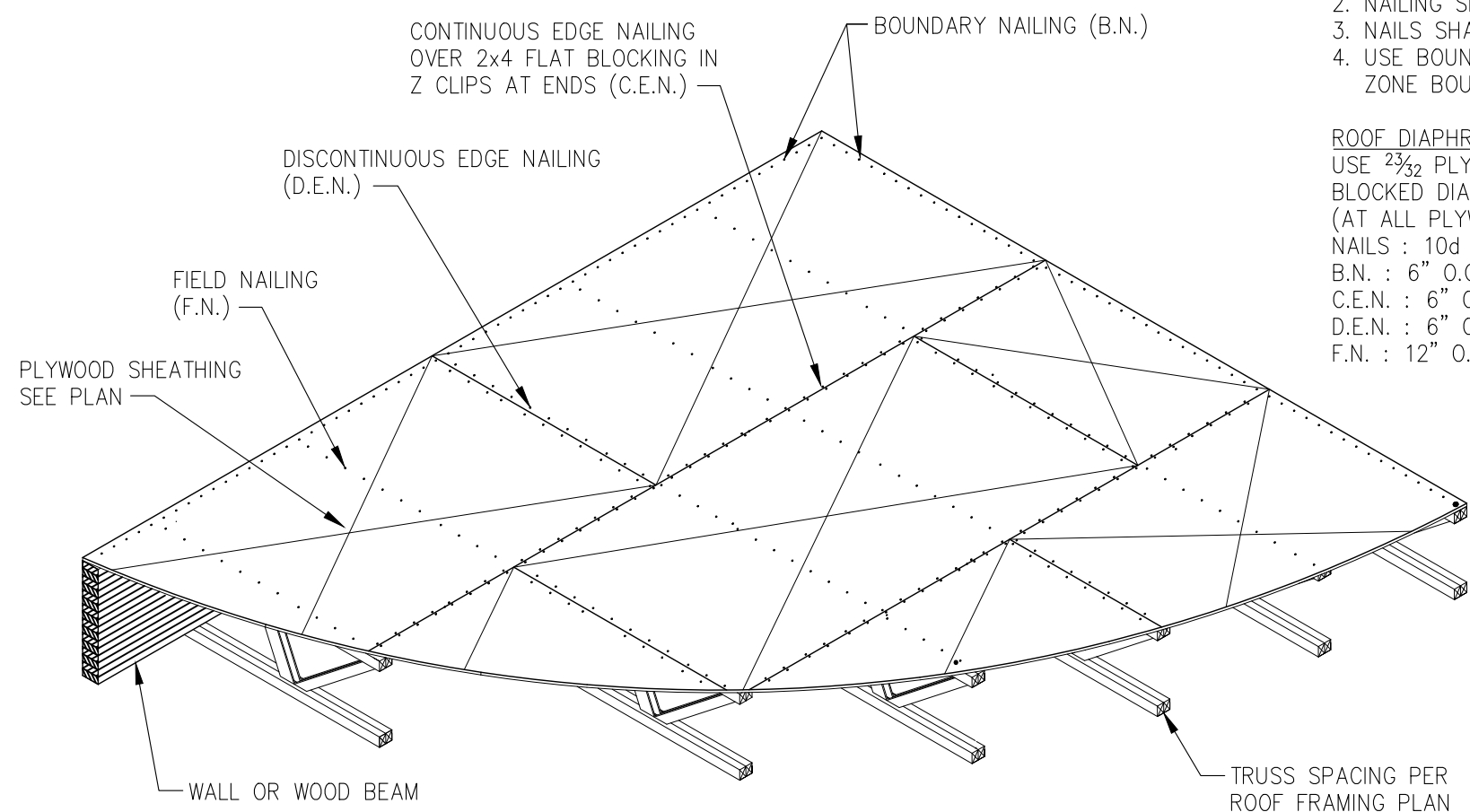


NOTE:
ALSO, APPLY ROOF TOP AND SUSPENDED POINT LOADS.
WEIGHT AND LOCATION OF UNITS AS NOTED ARE SHOWN ON
S-101 AND ARE NOT INCLUDED IN THE ABOVE LOADING
DIAGRAM. VERIFY THESE LOADS WITH MECHANICAL SUPPLIER
BEFORE DESIGNING TRUSS.

TRUSS LOADING

3

S-101



TYPICAL ROOF DIAPHRAGM DETAIL

2

S-101

PLAN NOTES

- REF. SHEET S-000 FOR STRUCTURAL NOTES AND SPECIAL INSPECTIONS.
- REF. 9/S-301 FOR TYPICAL SUSPEND THREADED ROD SUPPORT DETAIL AS REQUIRED.
- REF. 7/S-301 & 12/S-301 FOR TYPICAL SOFFIT FRAMING AT SERVICE COUNTER. REFER TO ARCH. FOR LOCATION.
- REF. 2/S-301 FOR TYPICAL HEADER DETAIL AS REQUIRED U.N.O.
- REF. 8/S-301 FOR TYPICAL MECHANICAL UNIT SUPPORT DETAIL AS REQUIRED.
- REF. 6/S-301 FOR TYPICAL BRIDGING AND BRACING DETAIL AS REQUIRED.
- REF. 10/S-301 FOR TYPICAL PARTITION WALL SUPPORT PARALLEL TO TRUSS DETAIL AS REQUIRED.
- REF. 11/S-301 FOR TYPICAL PARTITION WALL SUPPORT PERPENDICULAR TO TRUSS DETAIL AS REQUIRED.
- REF. 1/S-100 FOR SHEARWALL SCHEDULE.
- REF. 12/S-201 FOR METAL STUD VERTICAL BLOCKING.
- 2x4 BLOCKING @ 5'-0" O.C. W/ CONT SIMPSON CS 20 STRAP ON TOP OF BLOCKING
- DESIGN TRUSS FOR 3.5K AXIAL LOAD.

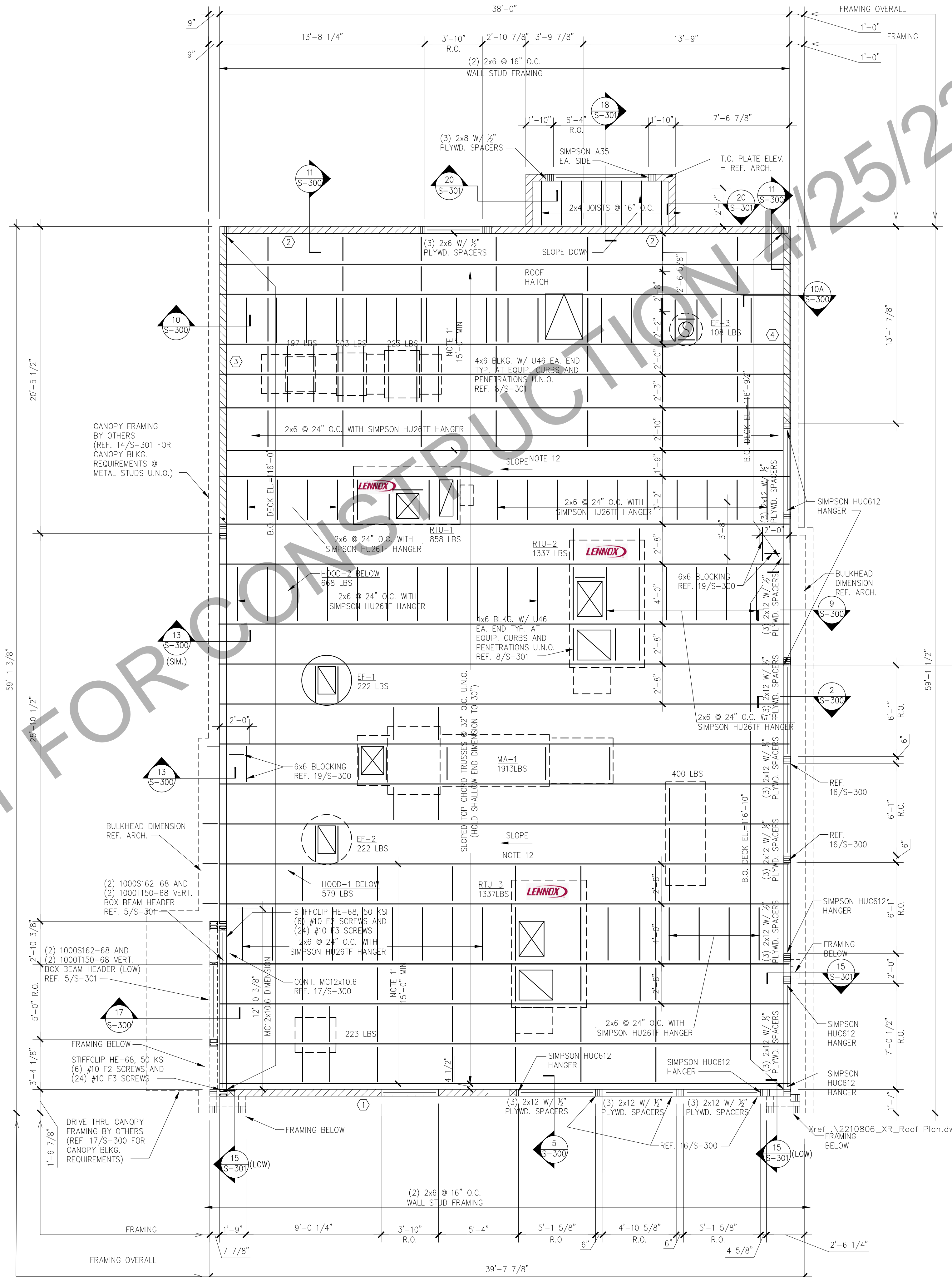
LOOSE LINTEL ANGLE SCHEDULE		
ANGLE	SIZE	SPAN
L6x3 1/2x3/8 LLV		UP TO 11'-0"

NOTE:
1. PROVIDE 8" BEARING (MIN.) EACH END OF LINTEL.
STEEL IS HOT-DIP GALVANIZED.

ROOF NOTES

1

S-101



ROOF FRAMING PLAN

A

S-101



PANDA RESTAURANT GROUP INC.
1683 Walnut Grove Ave.
Rosemead, California
91770
Telephone: 626.799.9898
Facsimile: 626.372.8288

All ideas, designs, arrangement and plans indicated or represented by this drawing are the property of Panda Express Inc. and were created for use on this specific project. None of these ideas, designs, arrangements or plans may be used by or disclosed to any person, firm, or corporation without the written permission of Panda Express Inc.

REVISIONS:

ISSUE DATE:

1 03.04.2022 ISSUE FOR PERMIT

DRAWN BY:

PANDA PROJECT # - S8-22-D8698
C&P PROJECT # - 2210806



2600 Maitland Center Parkway
Suite #200
Maitland, FL 32751
P (407) 661-9100
F (407) 661-9101
c-p.com

03.04.2022

PANDA EXPRESS

TRUE WARM AND WELCOME 2200
3030 DERITA ROAD
CONCORD, NC 28027

S-101

ROOF FRAMING PLAN
CARRIER

TRUE WARM & WELCOME 2200 R4