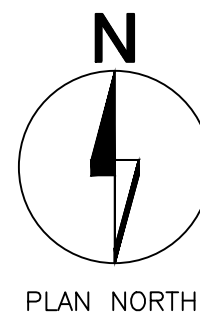
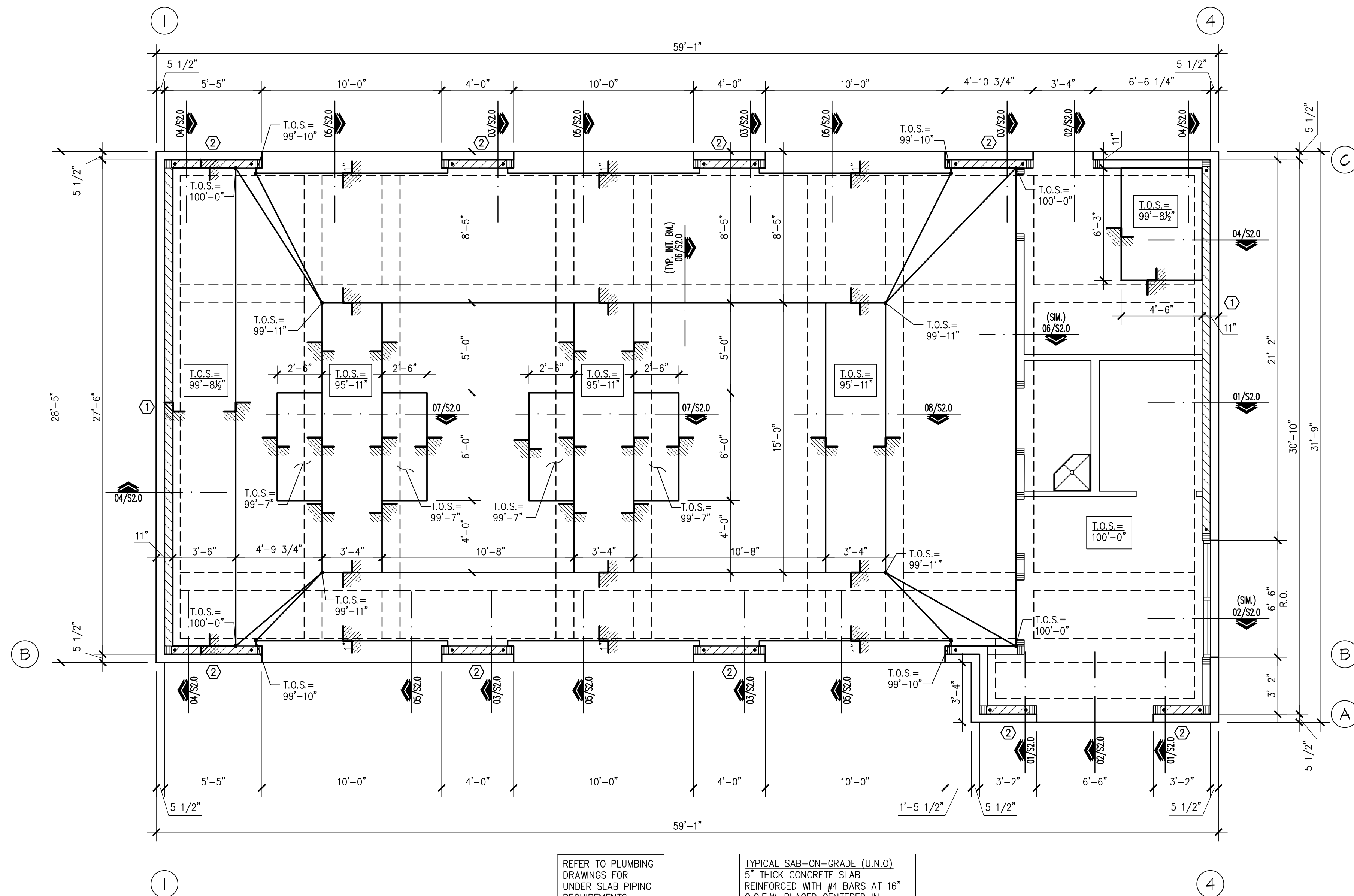


X:\PROJECTS\22047 Strickland Brothers Dawsonville GA\CAUS\STRUCT\22047 Issue for Permit 1.26.2022\22047S1.0.dwg, S1.0, 1/26/2022 4:17:22 PM, created, DWG to PDF.pc3, ARCT full bleed D (24.00 x 36.00 inches), 1:1



# **01 FOUNDATION PLAN**

SCALE: 1/4"=1'-0"

## PLAN NOTES:

1. REF. SHEET S0.0 FOR STRUCTURAL NOTES AND SPECIAL INSPECTION REQUIREMENTS.
2. REF. 09/S2.0 FOR TYPICAL CORNER BAR DETAIL AS REQUIRED.
3. REF. 10/S2.0 FOR TYPICAL SLAB RECESS DETAIL AS REQUIRED.
4. REF. 01/S2.1 FOR TYPICAL GRADE BEAM PENETRATION DETAIL AS REQUIRED.
5. REF. 02/S2.1 FOR TYPICAL CURB DETAIL AS REQUIRED.
6. (\*) INDICATES SIMPSON HDU HOLDOWN. REFER TO SHEARWALL SCHEDULE ON S1.1 FOR SIZE AND 03/S2.1 FOR TYPICAL HOLDOWN DETAIL.
7. REFER TO 05/S2.1 FOR TYPICAL TRASH ENCLOSURE SECTION. REFER TO A0.3 FOR TRASH ENCLOSURE PLAN.



**Ronald R. Roberts**  
Associates, Inc.  
Consulting Engineers  
2946 N. Stemmons Freeway  
Dallas, Texas 75247-6103  
Phone: (214) 637-6299  
www.rara.net

COPYRIGHT © 2022

Revisions:

File Name: 22047  
Project No: 22047  
Date: 01/19/22  
Drawn By: SM  
Checked By: CB

SHEET

**S1.0**

FOUNDATION  
PLAN