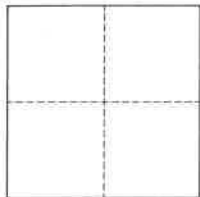


# CORNER RECORD

Agency Index BK 150 PG 57Document Number CR 16353City of BerkeleyCounty of Alameda, CaliforniaBrief Legal Description Intersection of Blake Street and Fulton Street

## CORNER TYPE

## COORDINATES (Optional)



- ☐ Government Corner ☒ Control  
☐ Meander ☐ Property  
☐ Rancho ☐ Other

Date of Survey 11/18/2022

N. \_\_\_\_\_ E. \_\_\_\_\_

Elevation \_\_\_\_\_

Units ☐ Metric ☐ U.S. Survey Foot

Horizontal Datum \_\_\_\_\_

Zone \_\_\_\_\_ Epoch Date \_\_\_\_\_

Vertical Datum \_\_\_\_\_

☐ Complies with Public Resources Code §§8801-8819☐ Complies with Public Resources Code §§8890-8902PLS Act Ref.: ☐ 8765(d) ☒ 8771 ☐ 8773 ☐ Other:Corner/Monument: ☐ Left as found ☐ Established ☐ Rebuilt ☐ Pre-Construction☐ Found and tagged ☒ Reestablished ☐ Referenced ☒ Post-Construction

Narrative of corner identified and monument as found, set, reset, replaced, or removed:

☒ See sheet #2 for description(s):

- 2" BRASS DISK, WITH PUNCH, IN WELL, STAMPED "CITY OF BERKELEY" & "UNLAWFUL TO DEFACE". REESTABLISHED USING VERTICAL AND HORIZONTAL CONTROL FROM PRE-CONSTRUCTION CORNER RECORD 16205, OF ALAMEDA COUNTY RECORDS.

## SURVEYOR'S STATEMENT

This Corner Record was prepared by me or under my direction in conformance with

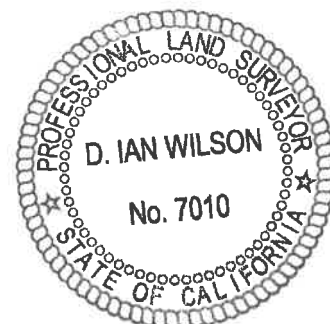
the Professional Land Surveyors' Act on December 9, 2022Signed [Signature] P.L.S. or R.C.E. No. 8040

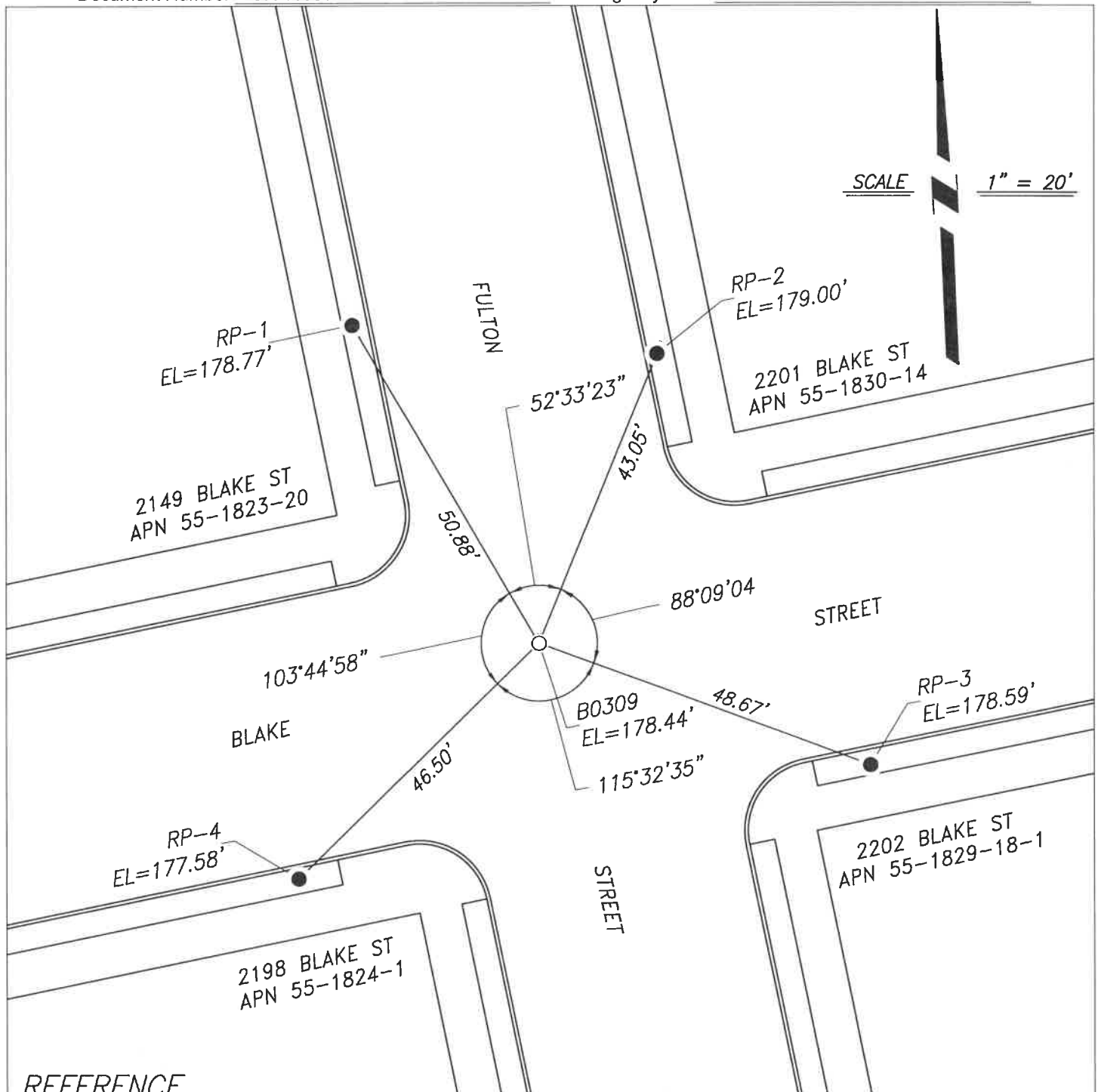
## COUNTY SURVEYOR'S STATEMENT

This Corner Record was received \_\_\_\_\_

and examined and filed JAN 3 4 2023Signed D. Ian Wilson P.L.S. or R.C.E. No. 7010Title ALAMEDA COUNTY SURVEYOR

County Surveyor's Comment \_\_\_\_\_





## REFERENCE

(A) CORNER RECORD 16205, IN THE CITY OF BERKELEY, FILED SEPTEMBER 1, 2022, ALAMEDA COUNTY RECORDS.

## LEGEND

- SET MONUMENT, 2" BRASS DISK IN CONCRETE, WITH PUNCH, STAMPED "CITY OF BERKELEY" & "UNLAWFUL TO DEFACE", IN WELL
- FOUND 3/4" IRON PIPE, WITH CAP, STAMPED LS 8040, IN LANDSCAPE AREA, AS REFERENCE POINT

## NOTES

1. ALL REFERENCES ARE ALAMEDA COUNTY RECORDS
2. BASIS OF ELEVATIONS: REFERENCE POINTS OF CORNER RECORD 16205
3. CITY OF BERKELEY MONUMENT B0309