

EXTERIOR FINISH SCHEDULE

INSTALL AND FURNISH BY: G.C. UNLESS NOTED OTHERWISE

01-11-19

NO	MANUFACTURER	MFG#	COLOR	FINISH	NOTES
(EIFS-1)	STO	STOTHERM ESSENCE SYSTEM	SW 6148 WOOL SKEIN	FINE	BUILDING BODY
(EIFS-2)	STO	STOTHERM ESSENCE SYSTEM	SW 7067 CITYSCAPE	FINE	BUILDING BODY
(EIFS-3)	STO	STOTHERM ESSENCE SYSTEM	SW 7069 IRON ORE	FINE	EIFS ACCENT BAND
(ST-1S)	CORONADO STONE PRODUCTS	900 SERIES	#2 GREY	-	STONE CAP (3/8" VERTICAL JOINT - MORTAR TO MATCH STONE CAP)
(ST-1)	CORONADO STONE PRODUCTS	INDUSTRIAL LEDGE	SHALE GREY	-	ENTRY PORTAL & WAINSCOT CONTACT: LISA KILGORE: 864-962-1221 PROVIDE 2-1/2" MODULAR JOISTS MFG.: ARGOS, COLOR: CHARCOAL
(CD-1)	FIBERON	WILDWOOD	MULGA	60% MATERIAL COVERAGE - RANDOM MIX (NON-GROOVE)	COMPOSITE DECKING - CONTACT: ERIC ATKINS @ 770-910-0930 EMAIL: Eric.Atkins@fiberondecking.com
(CD-2)	FIBERON	WILDWOOD	SUMAC	40% MATERIAL COVERAGE - RANDOM MIX (NON-GROOVE)	COMPOSITE DECKING - CONTACT: ERIC ATKINS @ 770-910-0930 EMAIL: Eric.Atkins@fiberondecking.com
(MTL-1)	EXCEPTIONAL METALS	-	"PANDA EXPRESS IRON ORE"	CAP FLASHING	

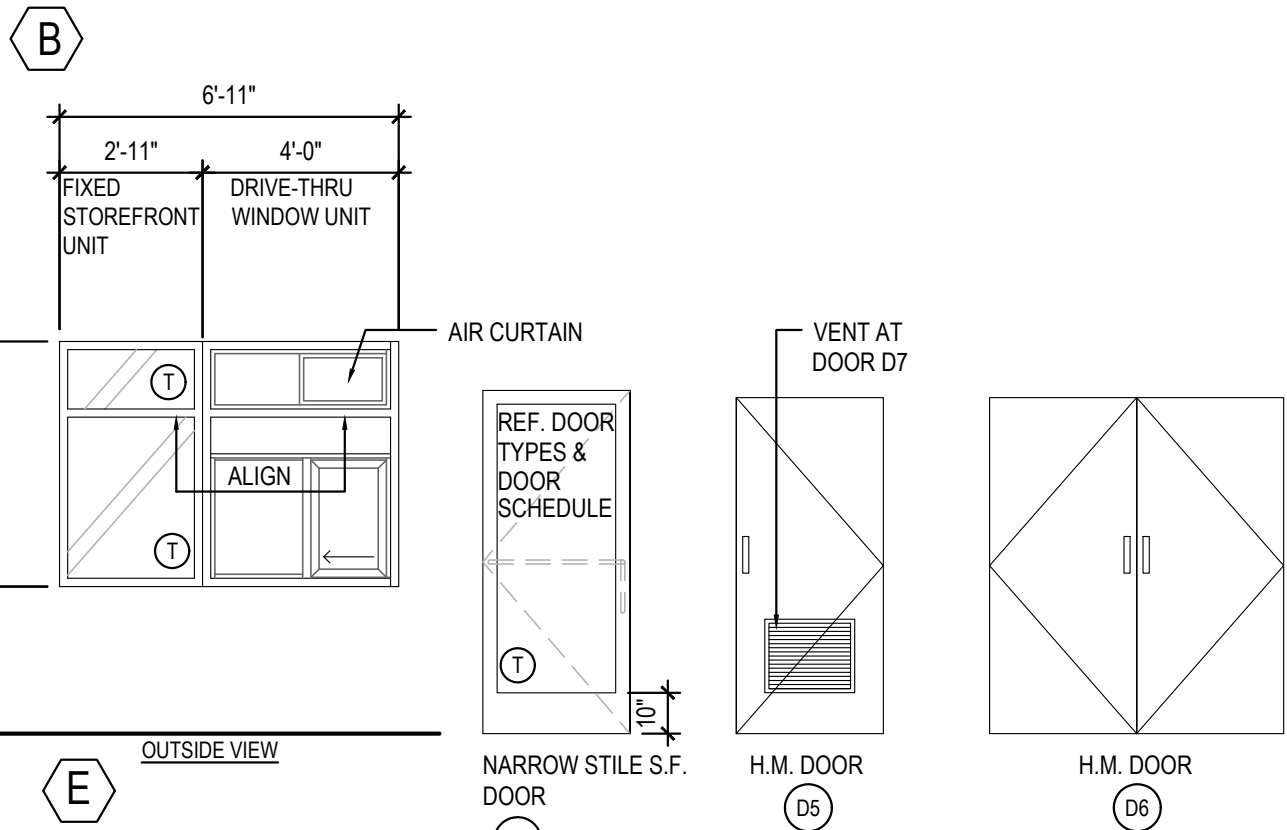
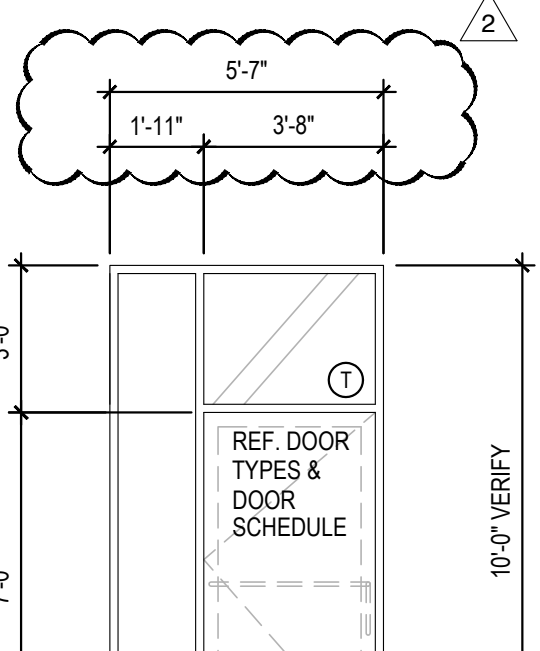
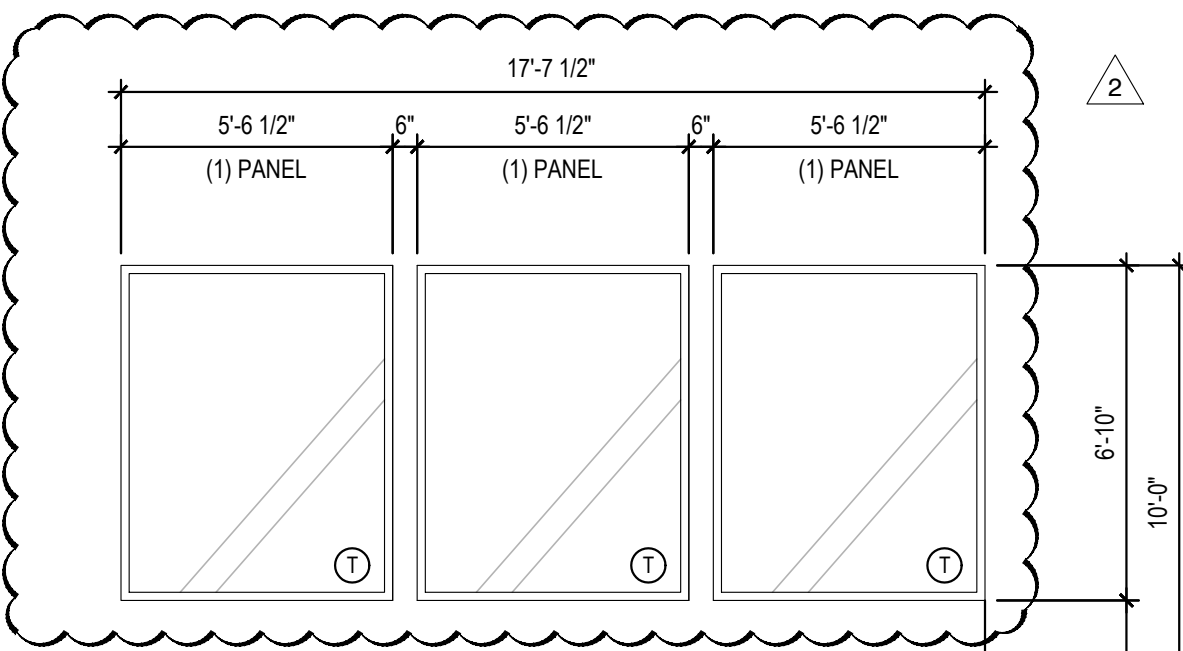
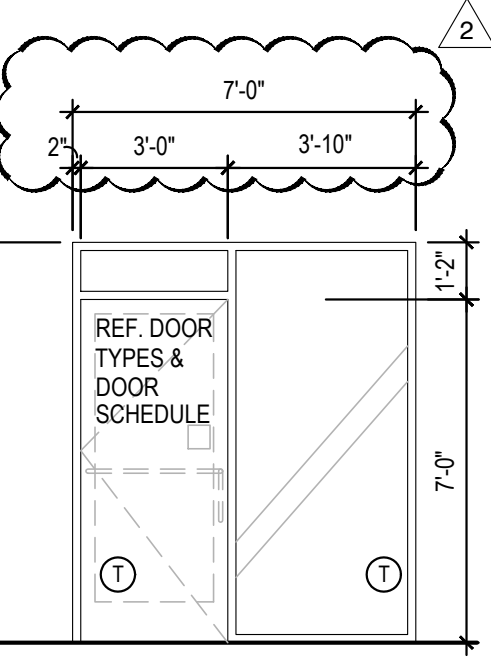
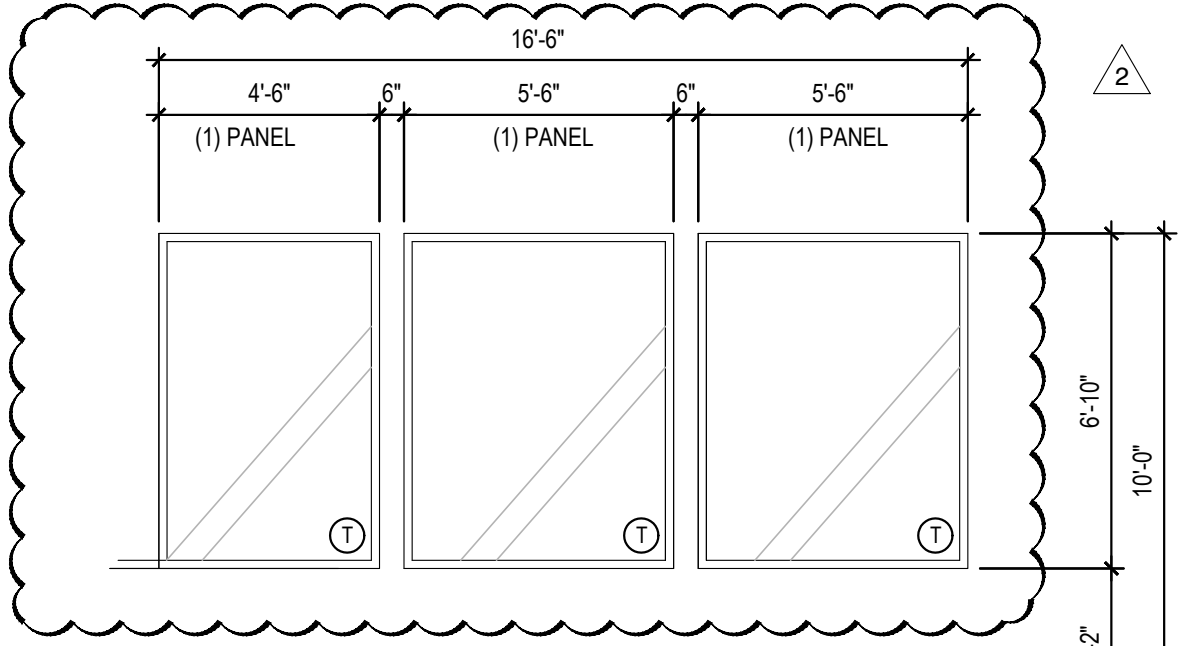
WINDOW SCHEDULE

INSTALL AND FURNISH BY: G.C. UNLESS NOTED OTHERWISE

SYM	WIDTH	HEIGHT	GLASS	FRAME	REMARKS
(A)	16'-6" LIN. FEET	6'-10"	1" INSULATED GLASS	DARK BRONZE ALUMINUM STOREFRONT	1" INSULATED GLAZING, IN 4.5" X 2" IN ANODIZED ALUMINUM FRAME REFER WINDOW TYPES FOR INDIVIDUAL SIZES
(B)	17'-7 1/2" LIN. FEET	6'-10"	1" INSULATED GLASS	DARK BRONZE ALUMINUM STOREFRONT	1" INSULATED GLAZING, IN 4.5" X 2" IN ANODIZED ALUMINUM FRAME REFER WINDOW TYPES FOR INDIVIDUAL SIZES
(C)	6'-10"	8'-2"	1" INSULATED GLASS	DARK BRONZE ALUMINUM STOREFRONT	1" INSULATED GLAZING, IN 4.5" X 2" IN ANODIZED ALUMINUM FRAME
(D)	5'-7"	10'-0"	1" INSULATED GLASS	DARK BRONZE ALUMINUM STOREFRONT	1" INSULATED GLAZING, IN 4.5" X 2" IN ANODIZED ALUMINUM FRAME
(E)	4'-0"	59 5/8"	TEMPERED GLASS	DARK BRONZE ANODIZED ALUMINUM	QUIK-SERV (NON-HEATED AIR CURTAIN), ROUGH OPENING: 48" X 60" SEE ADDITIONAL NOTE # 5. CONTACT: WADE ARNOLD, 800-388-8307

NOTES

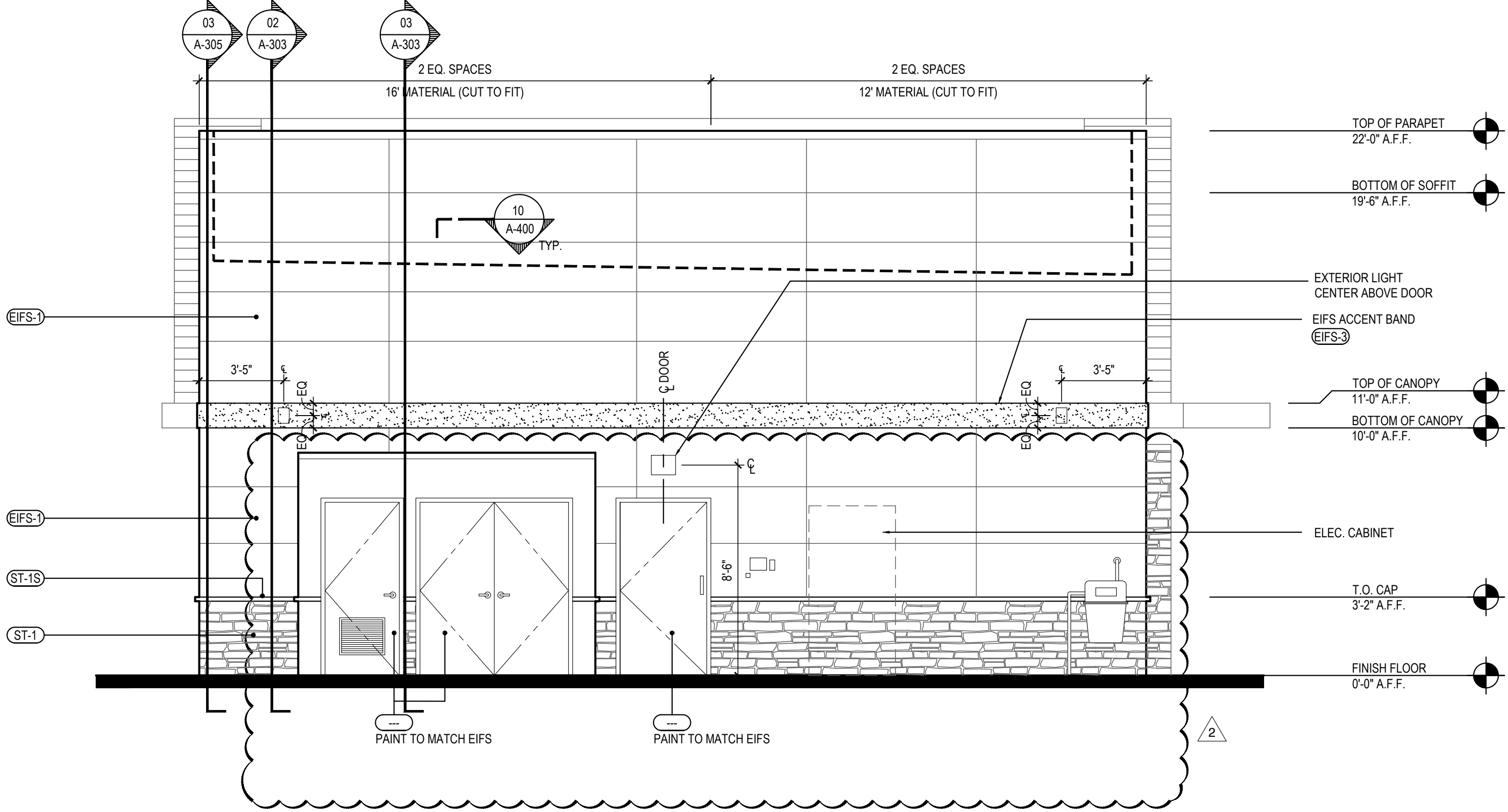
- INSULATING GLASS VITRO ARCHITECTURAL GLAZING SOLARBAN 60 LOW E. WINTER U=0.29 SHGC: 0.25 VIS TRANS: 35%
- DOORS: FULL GLAZED DOORS W/10" KICK BASE, ANODIZED ALUM FINISH. REFER HARDWARE SCHEDULE.
- WINDOW DIMENSIONS ARE FOR BIDDING PURPOSES ONLY. G.C. TO VERIFY ACTUAL WINDOW DIMENSIONS PRIOR TO FABRICATION INSTALLATION. GLASS FACADE AND ENTRY DOORS TO BE DESIGNED, DETAILED, FACTORY FABRICATED AND SITE ASSEMBLED AND ERECTED.
- MANUFACTURER: QUIK-SERV, MODEL SST-4860E WITH THRU-BEAM PHOTO-ELECTRIC BAR. REGIONAL APPLICATION WITH CF-25 NON HEATED AIR CURTAIN OR CHF-25 HEATED AIR CURTAIN. TYPE OF AIR CURTAIN LISTED ON WINDOW SCHEDULE.
- WINDOW SYSTEM SHALL COMPLY WITH APPLICABLE SECTION AND CHAPTER OF BUILDING CODE.
- TEMPERED GLASS



WINDOW AND DOOR ELEVATIONS

3

Scale= NTS A-200

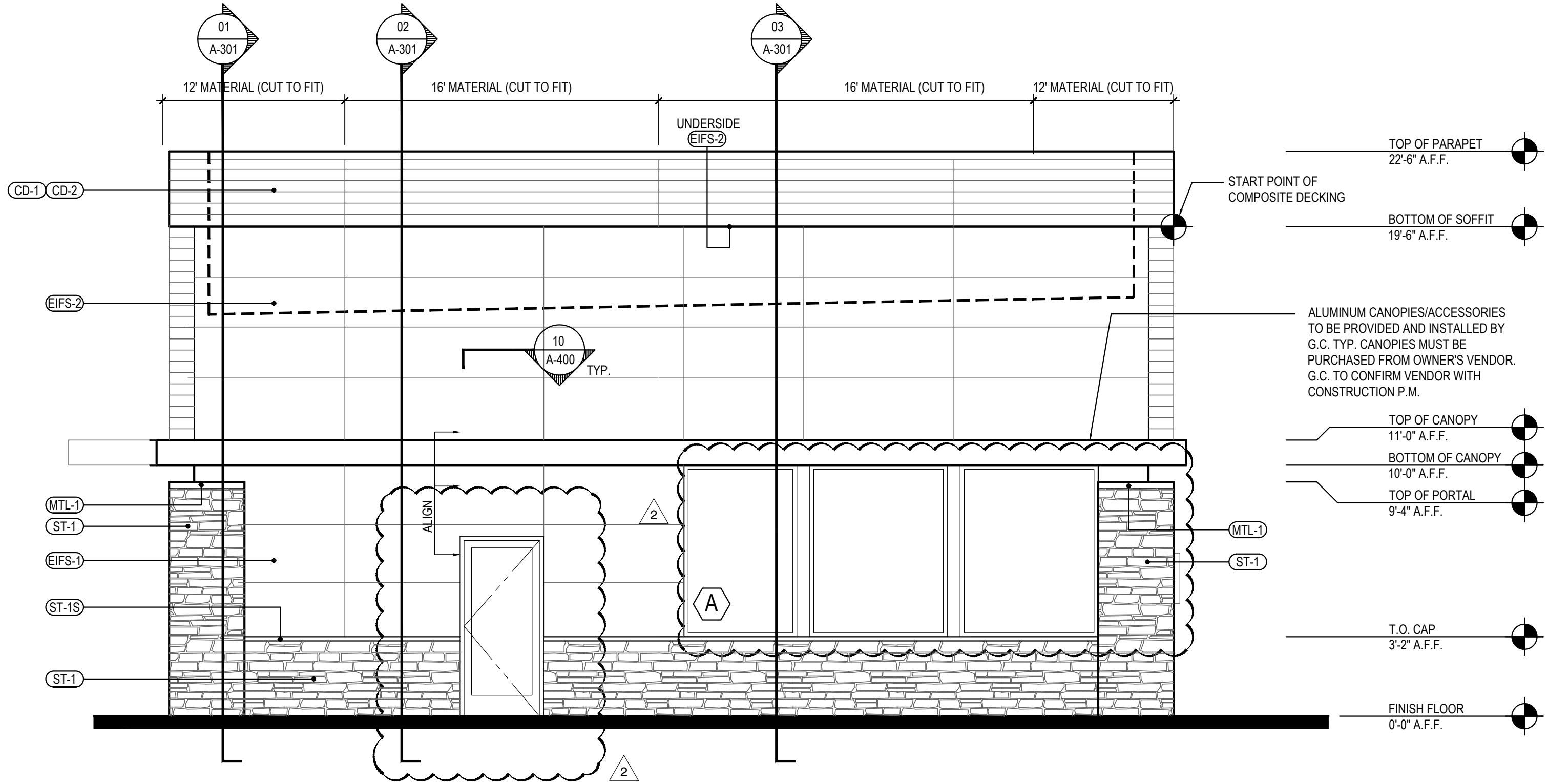


NORTH ELEVATION

2

Scale= 1/4" = 1'-0"

A-200



SOUTH ELEVATION

1

Scale= 1/4" = 1'-0"

A-200



PANDA EXPRESS, INC.
1683 Walnut Grove Ave.
Rosemead, California
91770

Telephone: 626.799.9898
Facsimile: 626.372.8288

All ideas, designs, arrangement and plans indicated or represented by this drawing are the property of Panda Express Inc. and were created for use on this specific project. None of these ideas, designs, arrangements or plans may be used by or disclosed to any person, firm, or corporation without the written permission of Panda Express Inc.

REVISIONS:

REV. LDH COMMENTS	12-16-2021
DRIVE THRU REVISION	01-14-2022

ISSUE DATE:

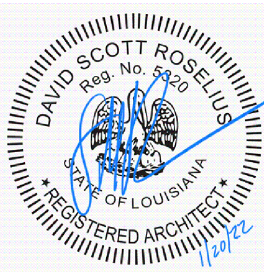
PERMIT/BID ISSUE	09-20-2021
PERMIT/BID ISSUE	01-20-2022

DRAWN BY:

PANDA PROJECT #: S8-21-D8118

PANDA STORE #: D8118

ARCH PROJECT #: 20185



Heights Venture
ARCHITECTURE • DESIGN

HOUSTON 1111 North Loop West, Suite 800 Houston, Texas 77008 713 869 1103 V DALLAS 5741 Legacy Drive, Suite 320 Plano, Texas 75024 972 490 7292 V

PANDA EXPRESS

TRUE WARM & WELCOME
901 N. SERVICE RD. E.
RUSTON, LA 71270

A-200

EXTERIOR
ELEVATIONS

TRUE WARM & WELCOME 2200 R6

PERMIT/RD SET