

CORNER RECORD

APN No. 099 - 1150 - 15 - (Optional)

Document Number **CR 3689**

Unincorporated _____

County of ALAMEDA, California

Brief Legal Description Buena Vista Avenue

CORNER TYPE

Government Corner ☐ Control ☐
 Meander ☐ Property ☐
 Rancho ☐ Other ☒
 Date of Survey May 14, 2009

COORDINATES

(Optional)

N. 429,258.1
E. 1,642,808.1
Zone _____ Datum _____
Elev. _____

Corner - Left as found ☒ Found and tagged ☐ Established ☐ Reestablished ☐ Rebuilt ☐

In compliance with Section 8771 of the Professional Land Surveyors' Act, this corner record is being filed to ESTABLISH ☒ / REESTABLISH ☐ the position of an existing monument PRIOR ☒ / SUBSEQUENT ☐ to street or highway reconstruction. (Use this portion only when applicable.)

Identification and type of corner found: Evidence used to identify or procedure used to establish or reestablish the corner:
Found Railroad Spike with cross on center-line Buena Vista Ave. near house #2053.

Established 4 reference points - set 1/2" rebar with plastic cap stamped "ACPWA SURVEYOR".

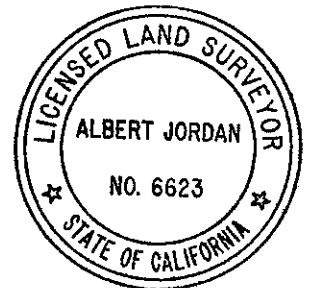
A description of the physical condition of the monument as found and as set or reset: Railroad Spike with cross found in good condition.

As an aide to recovery with Tesla Rd. to the south, this monument is approximately 26+47 feet N'ly.

SURVEYOR'S STATEMENT

This Corner Record was prepared by me or under my direction in conformance with the Land Surveyors' Act on 08/10 2009.

Signed Albert Jordan L.S. or R.C.E. Number PLS 6623
Expires: 12-31-09



COUNTY SURVEYOR'S STATEMENT

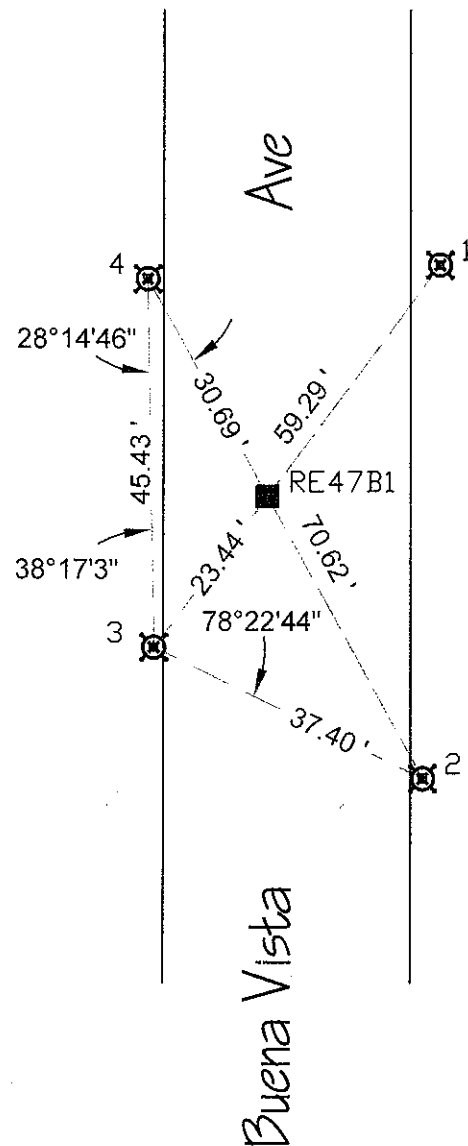
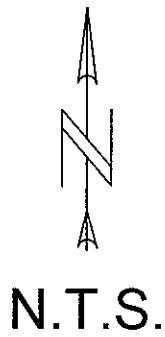
This Corner Record was received 6-16 2009 and examined
and filed August 10 2009

Signed [Signature] Title County Surveyor



County Surveyor's Comment _____

RE47B1



Legend

Found: Rail Road Spike with "x" on C.L. ■

Set: $\frac{1}{2}$ " Rebar w/Plastic Cap ☒

Credits

Lead: Brian Danforth

Assist.: Steven Sousa

Computations: Joanne Fetzer

CAD: Al Jordan

File Name: CR3689_20090730_withDXF_Al.dwg

Job#: R23343

Reference(s)

RS 251, Bk 5 Pg 89

PM 3685, Bk 137 Pg 48

Alameda County Monument Id System (PTa...) **RE47B1**