

RECORD OF SURVEY
RIGHT OF WAY

LOCATED WITHIN SECTIONS 2, 11, 14, 23, 24, 25, & 26,
TOWNSHIP 12 N., RANGE 11 W., M.D.B. & M AND
MENDOCINO COUNTY, CALIFORNIA

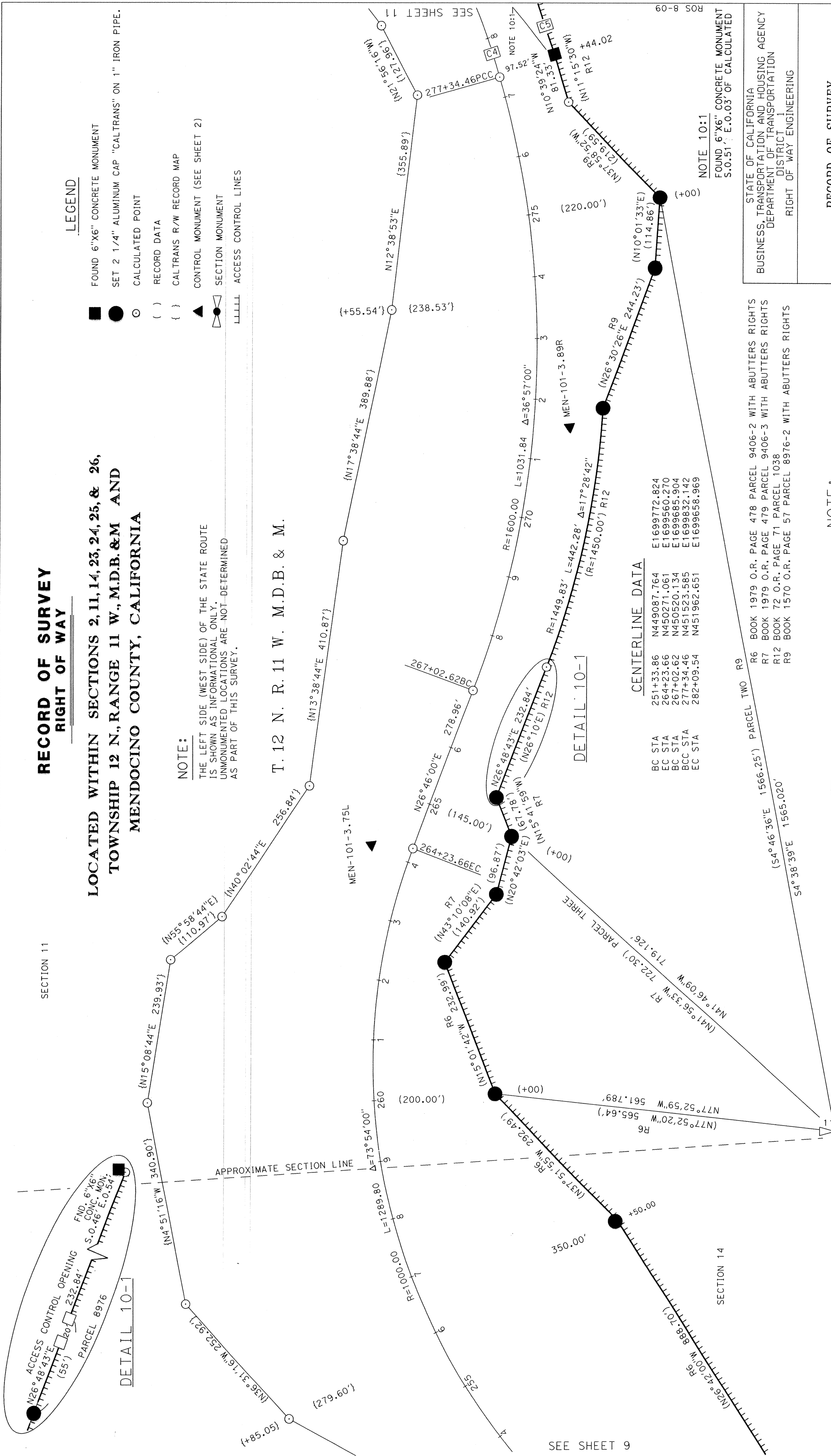
LEGEND

- FOUND 6"x6" CONCRETE MONUMENT
- SET 2 1/4" ALUMINUM CAP "CALTRANS" ON 1" IRON PIPE.
- CALCULATED POINT
- RECORD DATA
- CALTRANS R/W RECORD MAP
- CONTROL MONUMENT (SEE SHEET 2)
- SECTION MONUMENT
- ACCESS CONTROL LINES

NOTE:

THE LEFT SIDE (WEST SIDE) OF THE STATE ROUTE
IS SHOWN AS INFORMATIONAL ONLY.
UNMONUMENTED LOCATIONS ARE NOT DETERMINED
AS PART OF THIS SURVEY.

T. 12 N. R. 11 W. M.D.B. & M.



SEE SHEET 9

CENTERLINE DATA

BC STA	251+33.86	N49087.764	E1699772.824
EC STA	264+23.66	N450271.061	E1699560.270
BC STA	267+02.62	N450520.134	E1699685.904
BCC STA	277+34.46	N451523.585	E1699832.142
EC STA	282+09.54	N451962.651	E1699658.969

PARCEL TWO R9
R6 BOOK 1979 O.R. PAGE 478 PARCEL 9406-2 WITH ABUTTERS RIGHTS
R7 BOOK 1979 O.R. PAGE 479 PARCEL 9406-3 WITH ABUTTERS RIGHTS
R12 BOOK 72 O.R. PAGE 71 PARCEL 1038
R9 BOOK 1570 O.R. PAGE 57 PARCEL 8976-2 WITH ABUTTERS RIGHTS

NOTE:

SECTION AND OTHER LAND LINES ARE DERIVED
FROM ASSESSOR'S PARCEL DATA AND ARE
PROVIDED FOR GRAPHIC PURPOSES ONLY.

BASIS OF BEARINGS

THE BASIS OF BEARINGS FOR THIS SURVEY IS THE NORTH AMERICAN DATUM
OF 1927 (NAD27). HOLDING THE N.G.S. PUBLISHED COORDINATES FOR
MCPHERSON AND HOPLAND.

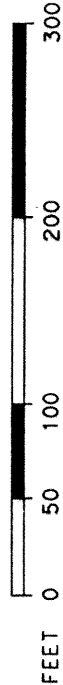


CONVERGENCE ANGLE
-0° 39' 39"
AT MEN-101-2.27L

SCALE FACTOR

THE COMBINED GRID FACTOR (CGF) IS USED TO REDUCE GEODETTIC
DISTANCES TO GROUND DISTANCES. THE CGF AT MEN-101-2.27L IS
0.99990050. MULTIPLY DISTANCES SHOWN BY 1.00009951 TO OBTAIN
GROUND DISTANCES.

SCALE 1"=100'



STATE OF CALIFORNIA
BUSINESS, TRANSPORTATION AND HOUSING AGENCY
DEPARTMENT OF TRANSPORTATION
DISTRICT 1
RIGHT OF WAY ENGINEERING

RECORD OF SURVEY
RIGHT OF WAY

ALONG STATE ROUTE 101
IN THE UNINCORPORATED
AREA OF MENDOCINO COUNTY
BETWEEN THE SONOMA COUNTY LINE
AND HOPLAND

CO.	DIST.	RTE.	PM	SHEET NUMBER
MEN	01	101	0.4/4.9	10 OF 12

MAPS	DRAWER	PAGE
	78	23

#042