

TYPICAL SUBSTRATES FOR INTERIOR WALLS SHALL BE AS FOLLOWS:

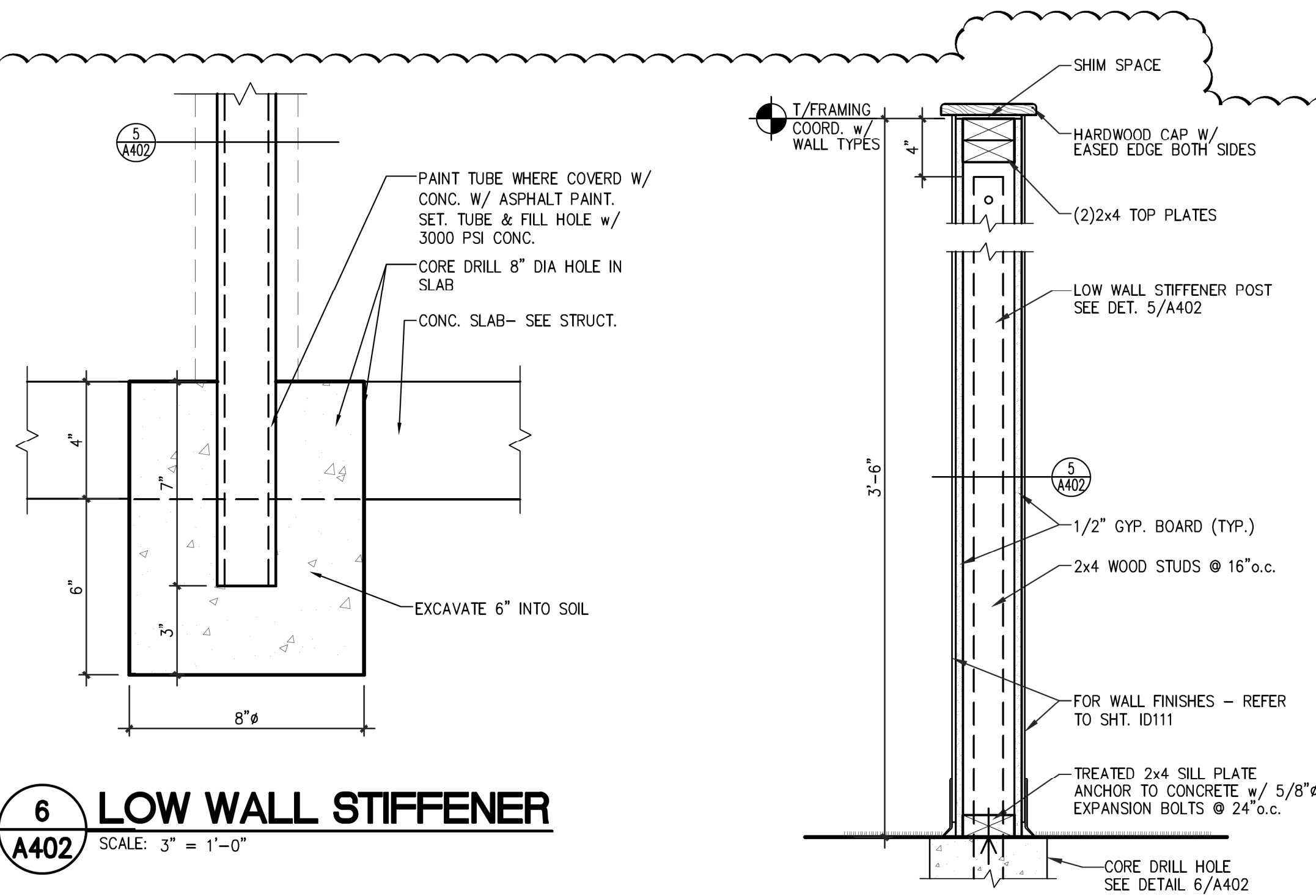
KITCHEN AREAS:
1/2" CEMENT BD. (WHERE TILE OR STAINLESS STEEL IS USED)
0'-0" TO 1'-0" - 1/2" CEMENT BD.
1'-0" AND ABOVE - 1/2" PLYWOOD (WHERE FRP IS USED)

DRINK STATION, ICE CREAM AND DRIVE THRU:
1/2" CEMENT BOARD (WHERE TILE IS USED)

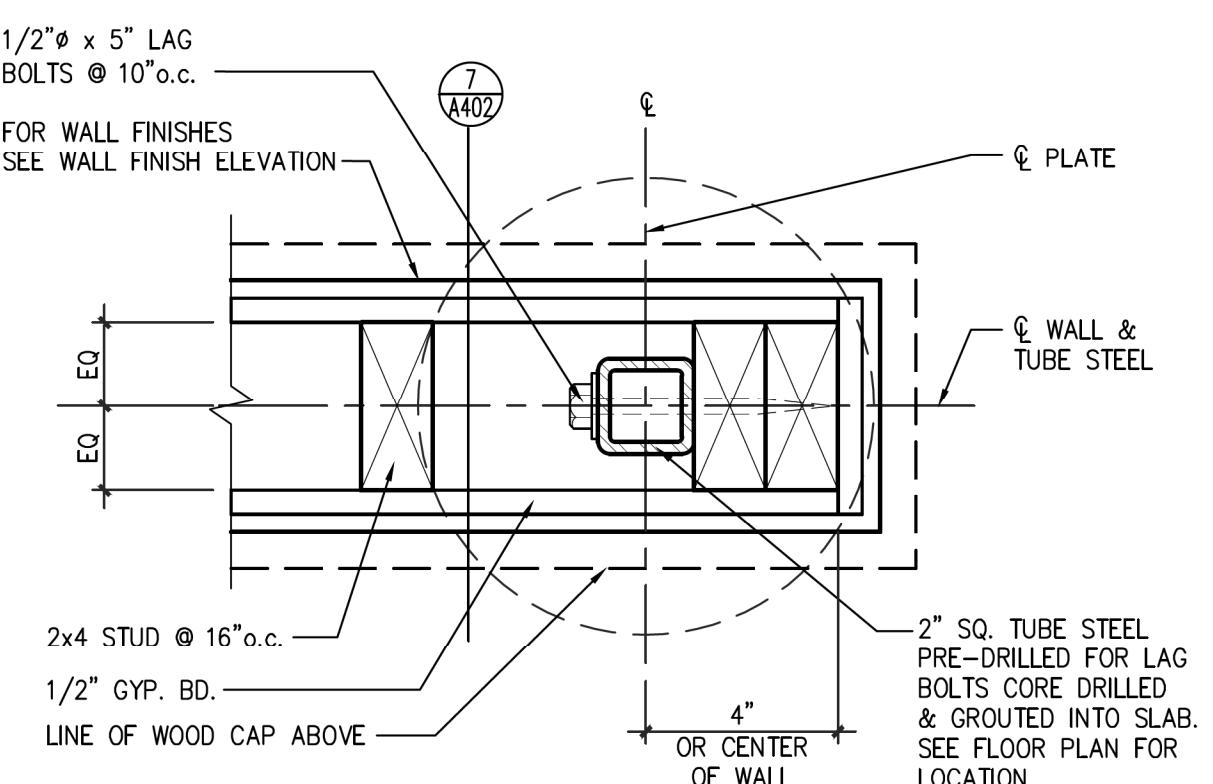
SEATING AREAS, TOILETS AND VESTIBULE:
1/2" GYPSUM BOARD
1/2" CEMENT BOARD (WHERE TILE IS USED)

BACK ROOM AND MECHANICAL:
1/2" MIN. PLYWOOD
1/2" CEMENT BOARD FIRST 12"

8 TYPICAL INTERIOR WALL DETAIL
A402 SCALE: 1 1/2" = 1'-0"

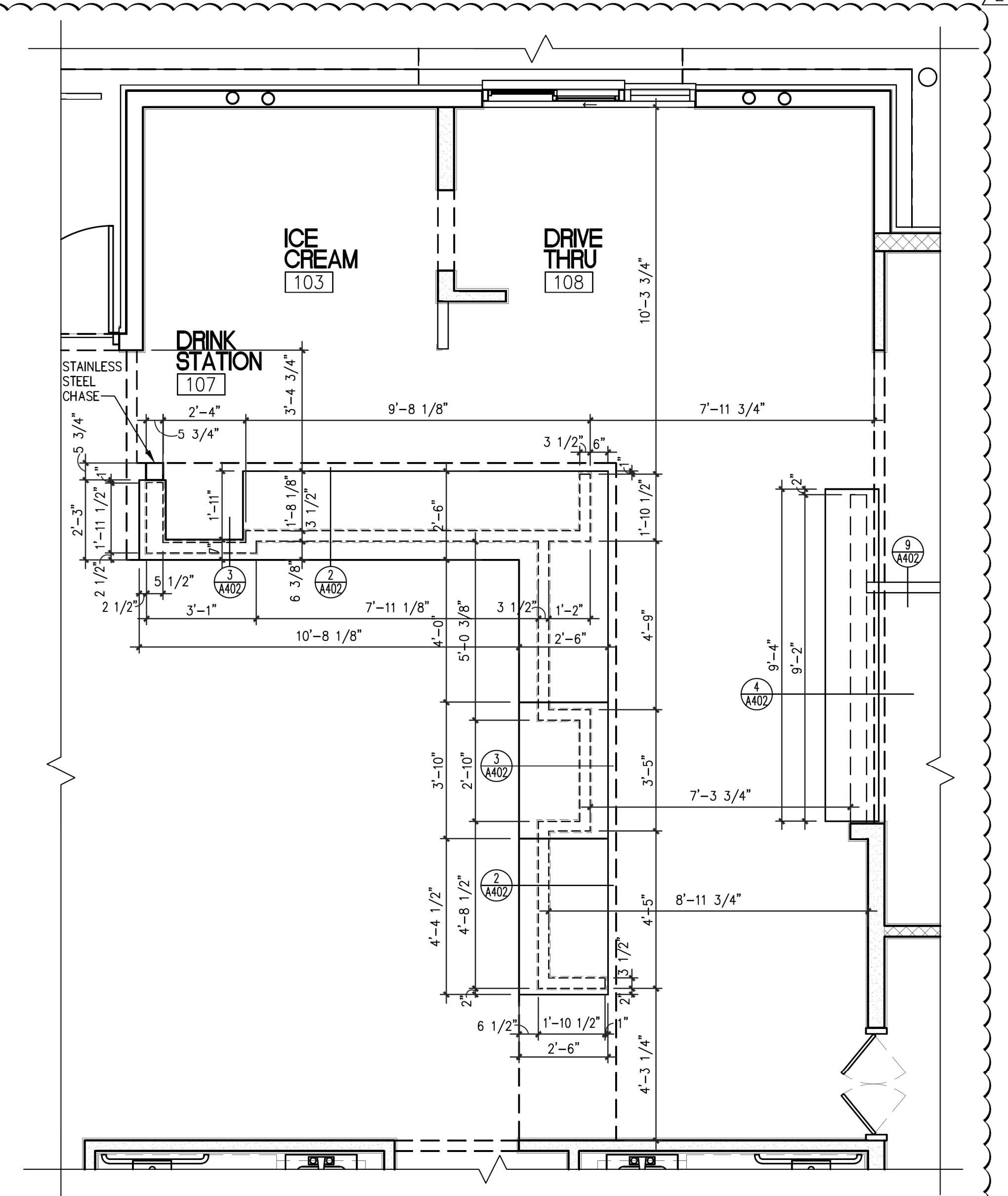


6 LOW WALL STIFFENER
A402 SCALE: 3" = 1'-0"

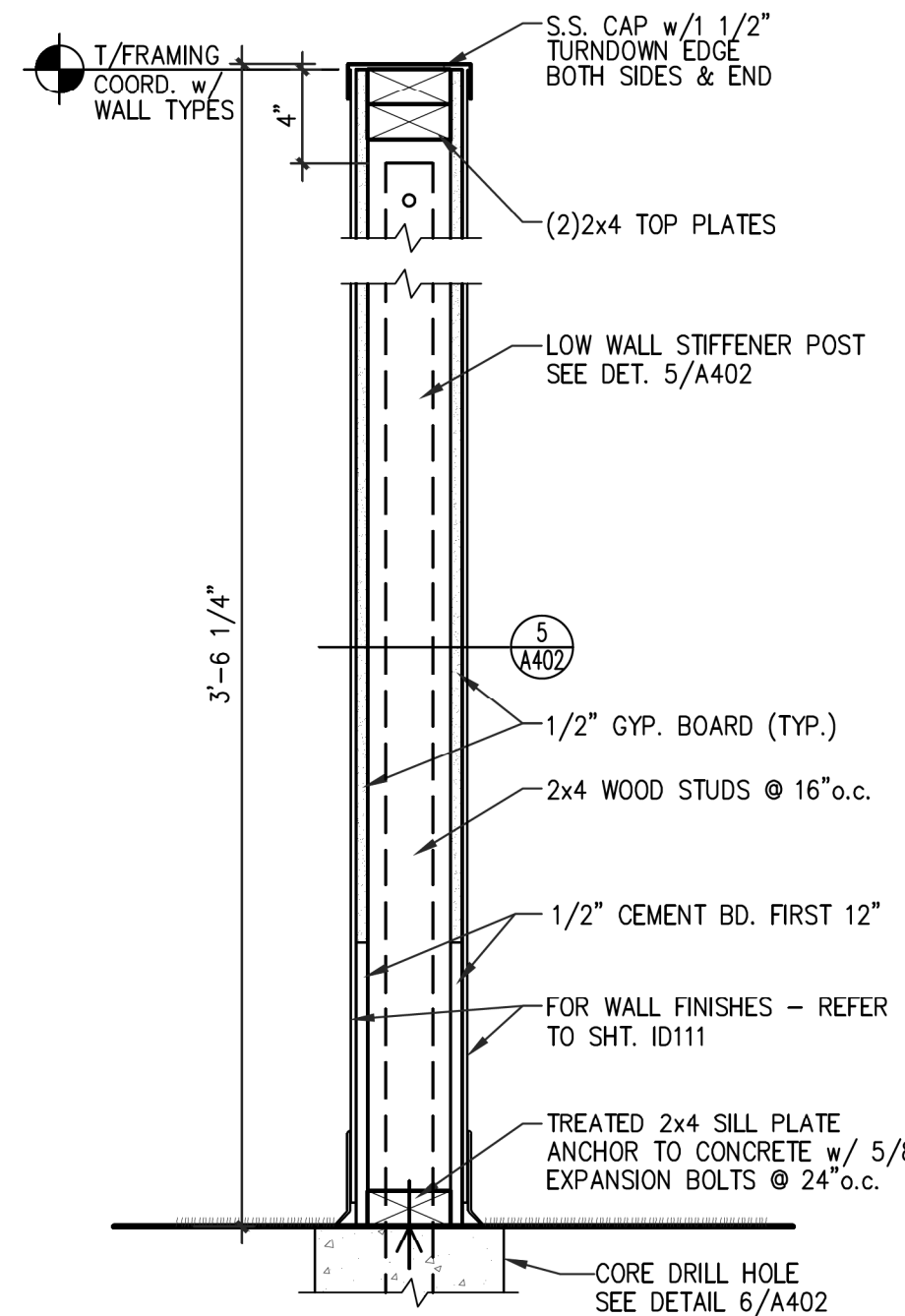


5 LOW WALL STIFFENER
A402 SCALE: 3" = 1'-0"
NOTE: END CONDITION SHOWN- INTERMEDIATE COND. SIM.- FIELD LOCATE

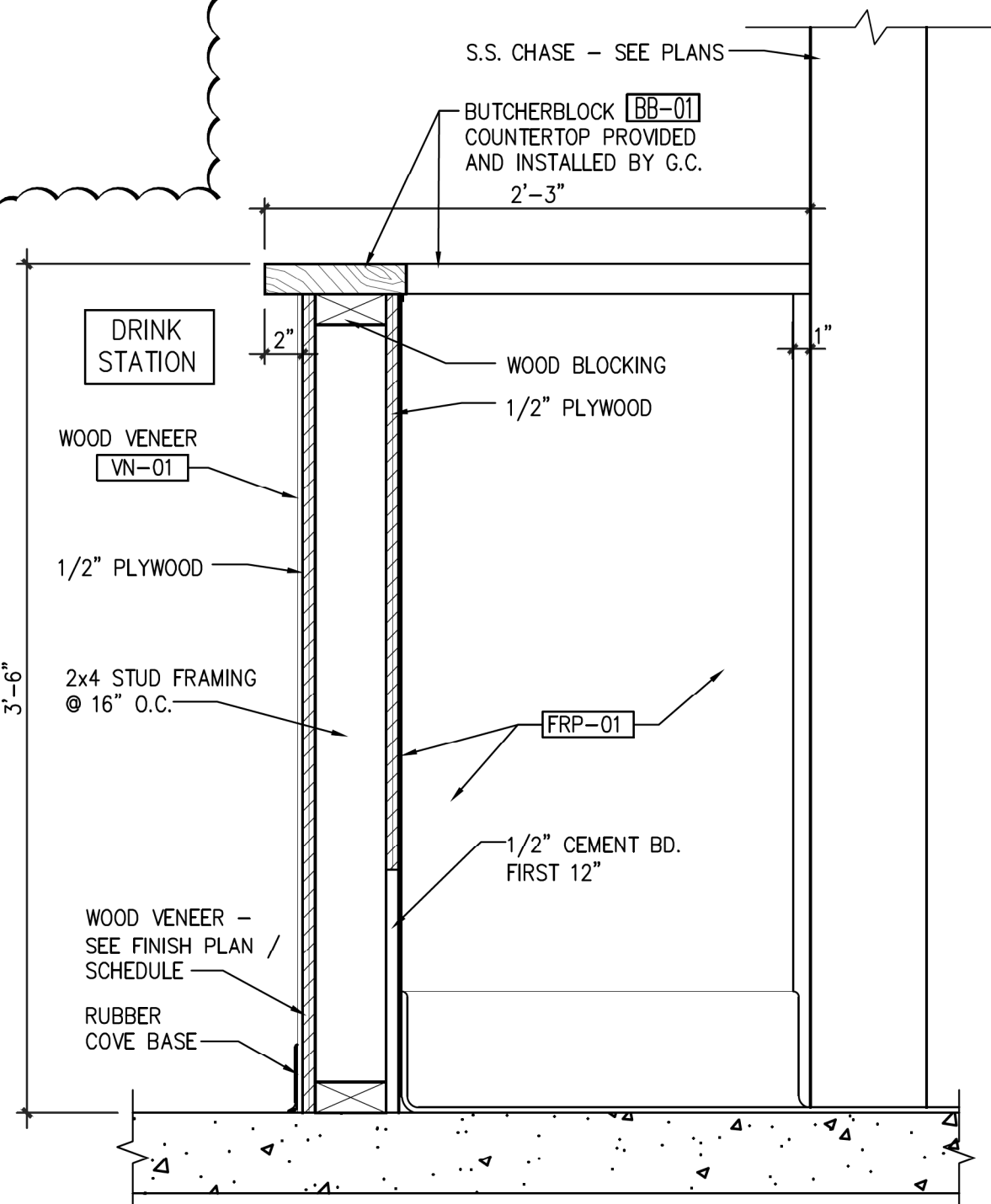
7 LOW WALL • DINING
A402 SCALE: 1 1/2" = 1'-0"



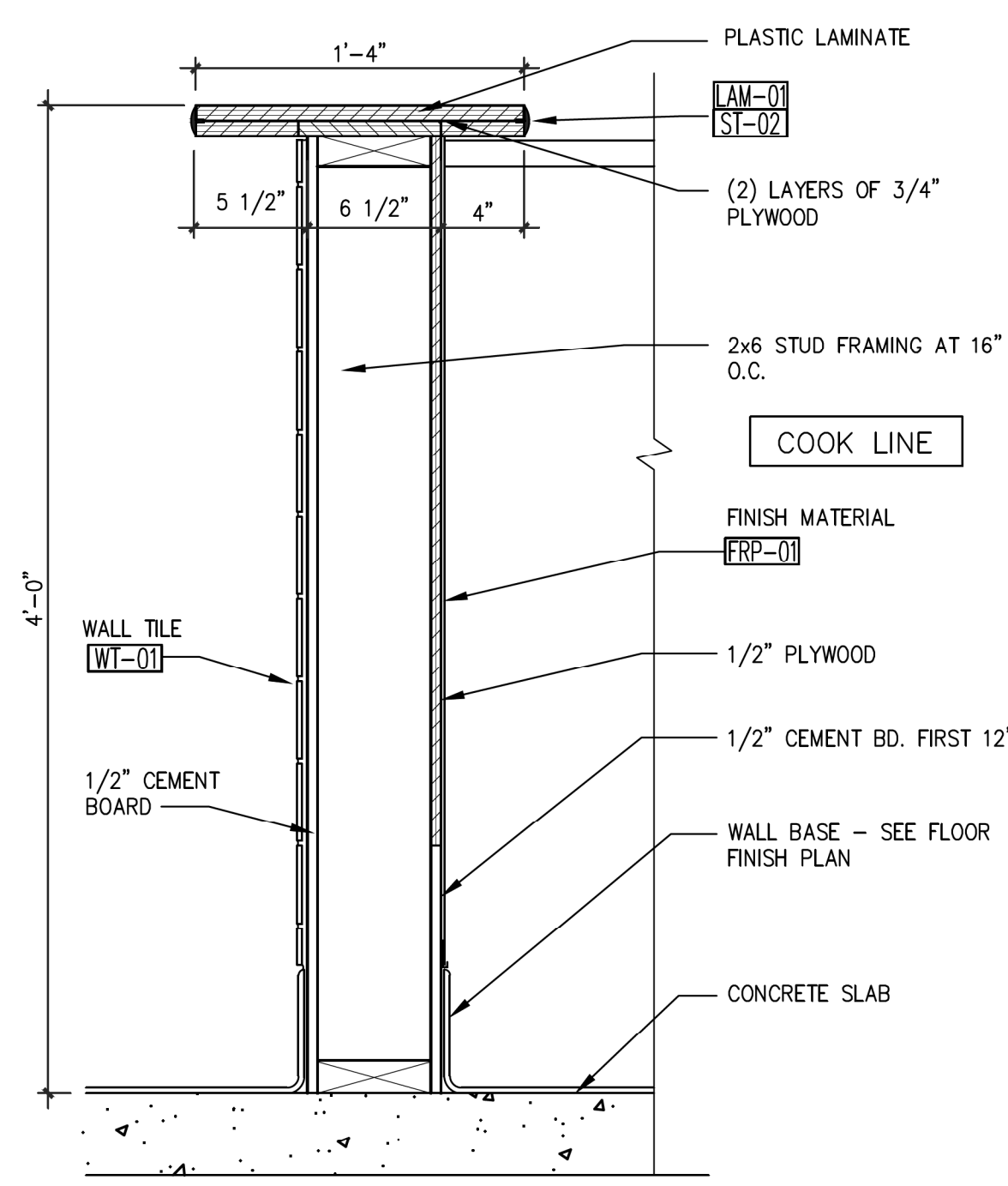
1 PLAN OF BARTOP COUNTER
A402 SCALE: 3/8" = 1'-0"



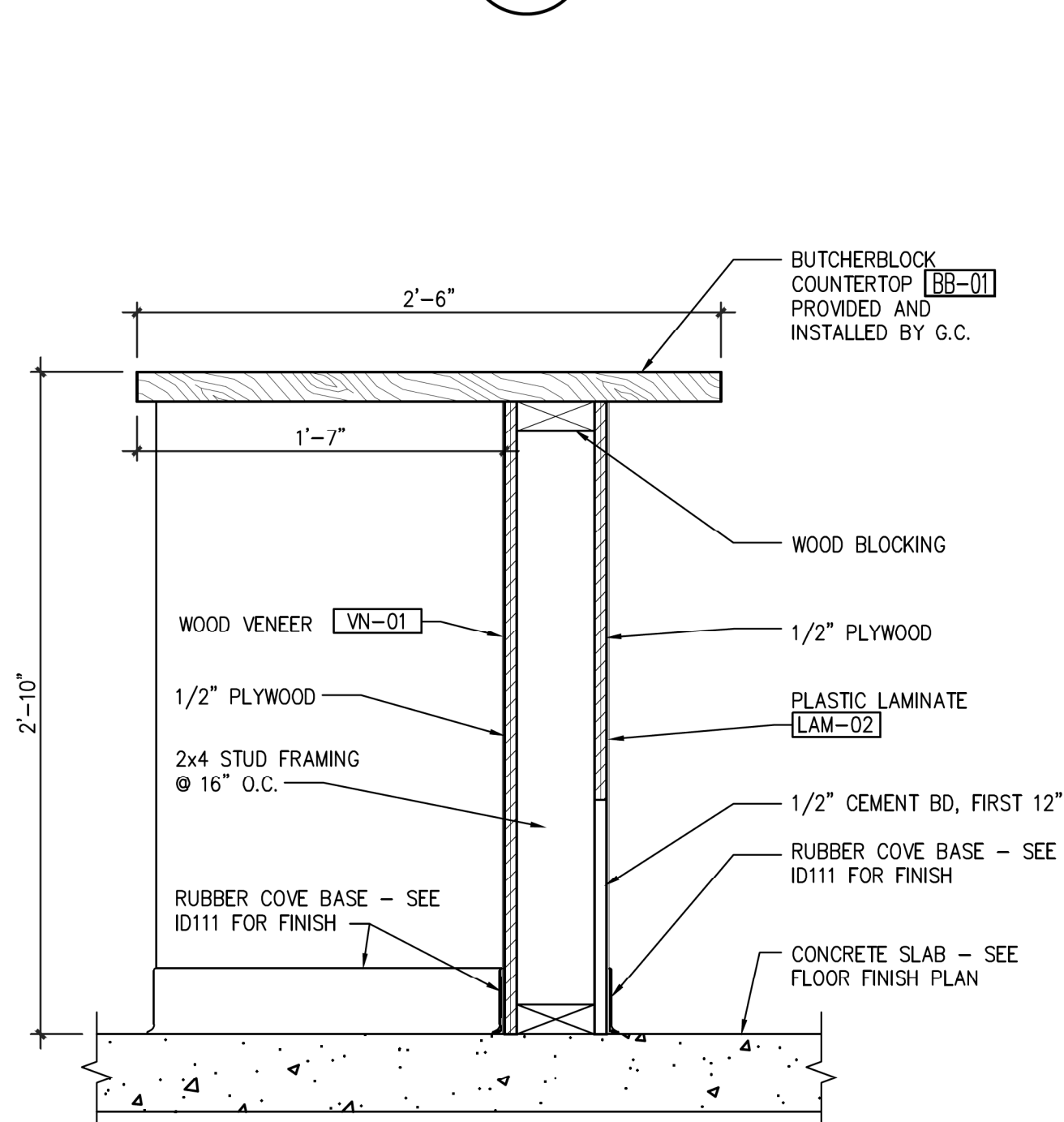
9 LOW WALL • COOKLINE
A402 SCALE: 1 1/2" = 1'-0"



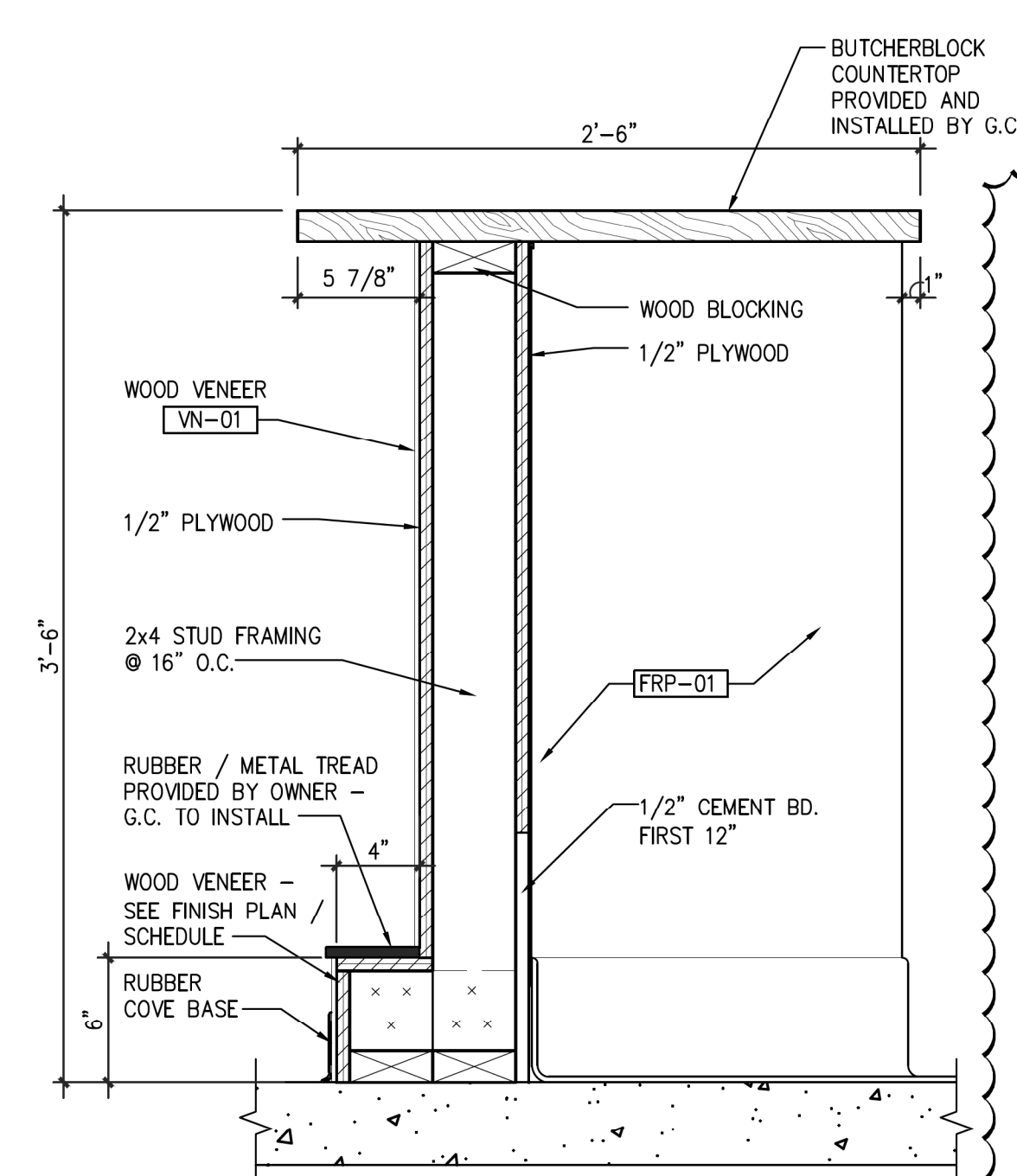
10 BAR COUNTER - SECTION
A402 SCALE: 1 1/2" = 1'-0"



4 PICK-UP COUNTER DETAIL
A402 SCALE: 1" = 1'-0"



3 BAR COUNTER - ADA SECTION
A402 SCALE: 1 1/2" = 1'-0"



2 BAR COUNTER - SECTION
A402 SCALE: 1 1/2" = 1'-0"