



PANDA EXPRESS, INC.
1683 Walnut Grove Ave.
Rosemead, California
91770
Telephone: 626.799.9898
Facsimile: 626.372.8288

All ideas, designs, arrangement and plans indicated or represented by this drawing are the property of Panda Express Inc. and were created for use on this specific project. None of these ideas, designs, arrangements or plans may be used by or disclosed to any person, firm, or corporation without the written permission of Panda Express Inc.

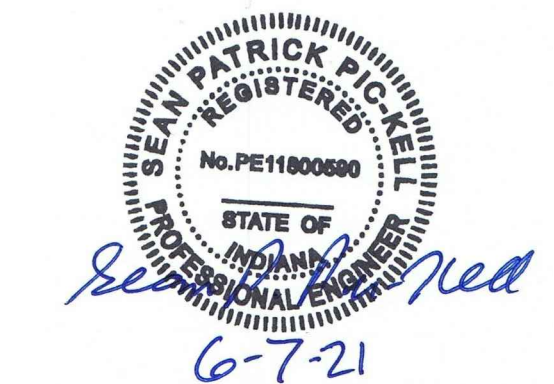
REVISIONS:	

ISSUE DATE:	
STATE PERMIT	06.07.21

DRAWN BY: G. COLLINS

PANDA PROJECT #: D8060

ARCH PROJECT #: JCDT20-0240



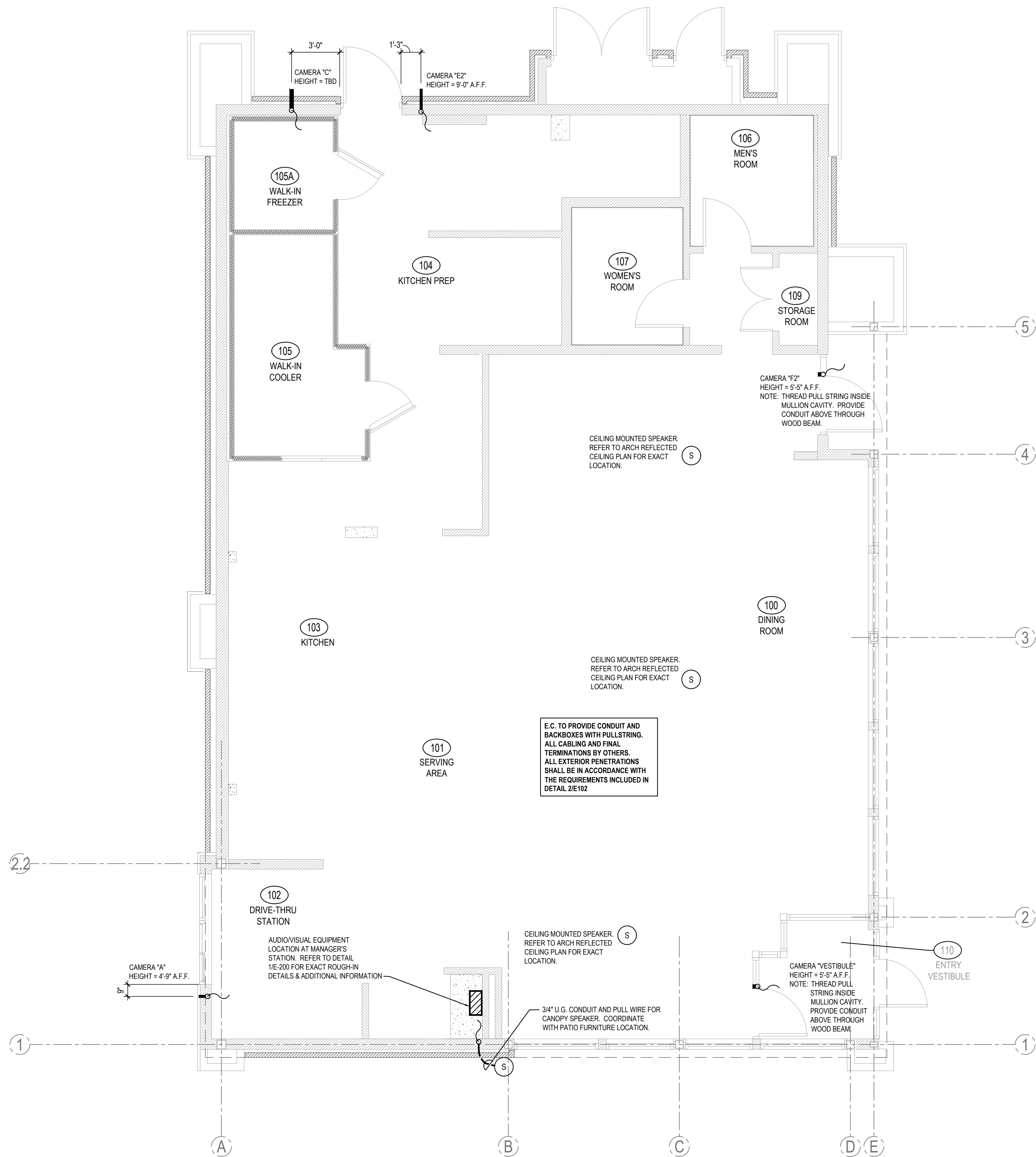
PANDA EXPRESS

TRUE WARM & WELCOME
390 W Spring Mill Pointe Dr.
Westfield, IN 46074

E-102

SECURITY CAMERA PLAN

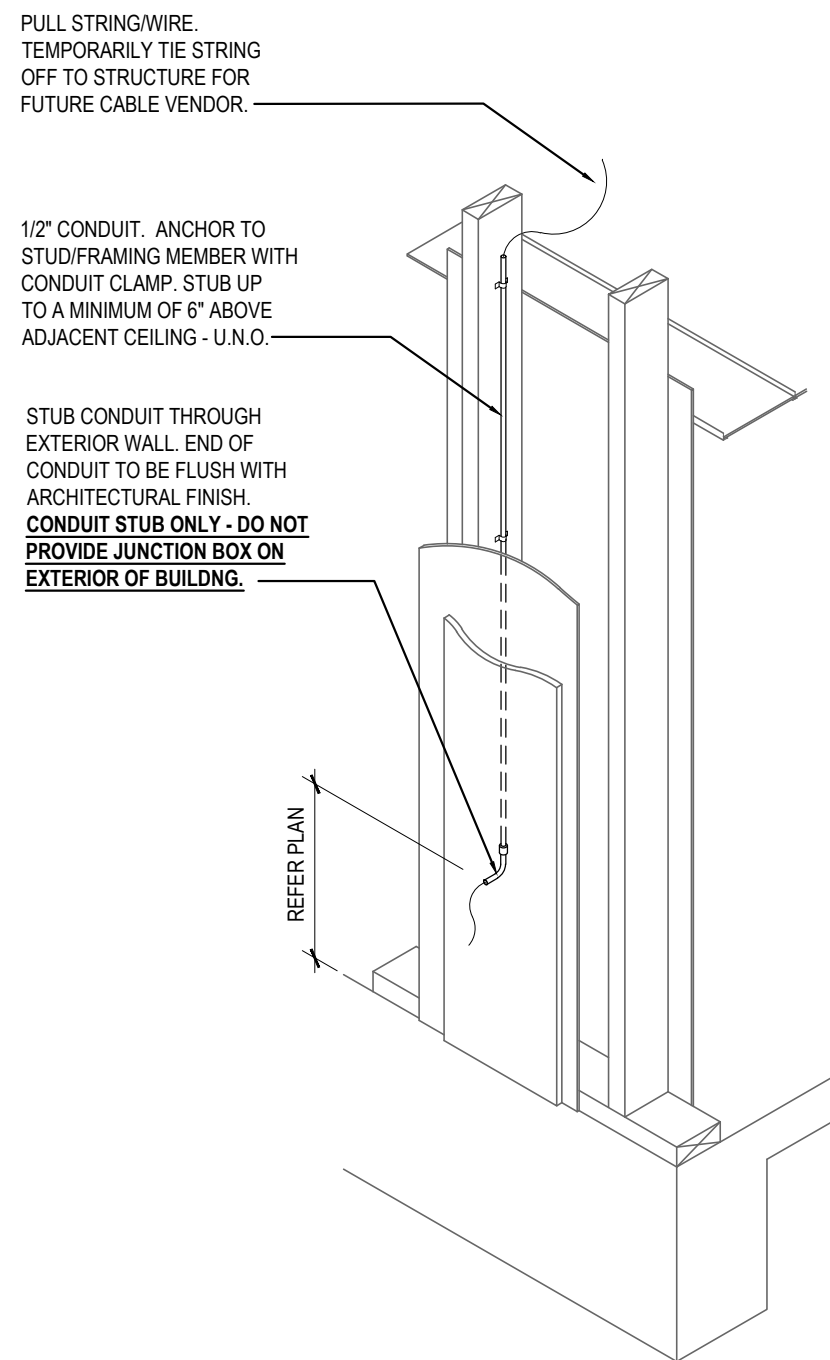
TRUE WARM & WELCOME 2300 R5



NOTE:
G.C./ELECTRICAL SUB TO
COORDINATE WITH PANDA
RESTAURANT PROJECT MANAGER
ON ANY CAMERA LOCATIONS TO BE
ADDED AND/OR OMITTED.

ACTUAL QUANTITY OF CAMERAS TO
BE VERIFIED BY G.C./ELECTRICAL
SUB WITH THE FOLLOWING CAMERA
VENDOR CONTACT.

JOHN STRAIN
INTERFACE SECURITY SYSTEMS
PHONE: 314-708-9878
EMAIL: john.strain@interfacesys.com



CONDUIT ROUGH-IN DETAIL 2
NOT TO SCALE E-102

SECURITY CAMERA PLAN 1
Scale= 1/4" = 1'-0" E-102