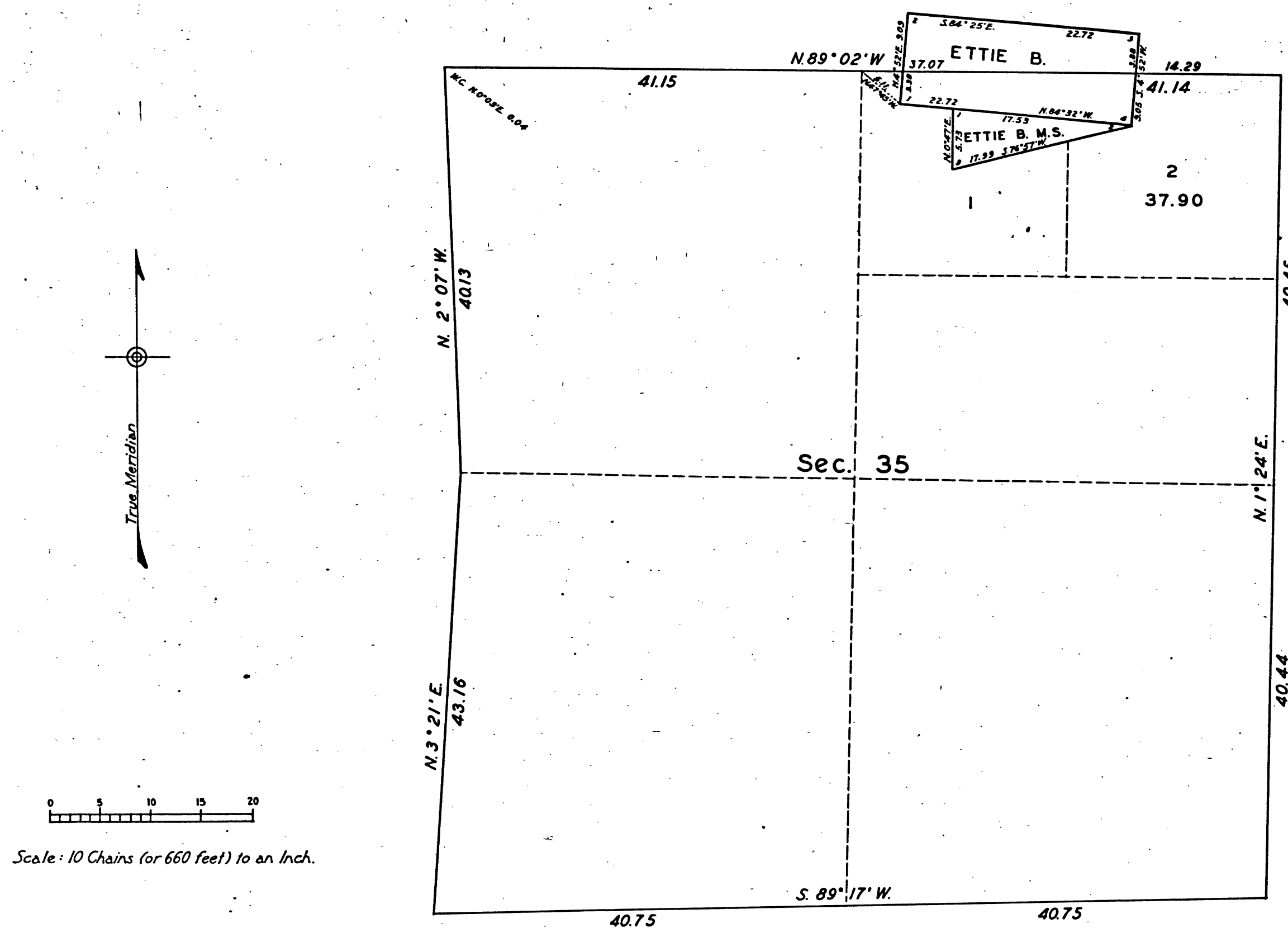


TOWNSHIP N° 5 NORTH, RANGE N° 13 EAST, MOUNT DIABLO MERIDAN, CALIFORNIA.
SUPPLEMENTAL PLAT OF SECTION 35



PUBLIC SURVEY OFFICE

GLENDALE, CALIFORNIA, SEPT. 16, 1941.

THE ABOVE SUPPLEMENTAL PLAT OF SECTION 35, TOWNSHIP 5 NORTH, RANGE 13 EAST, OF THE MOUNT DIABLO MERIDIAN, CALIFORNIA, BASED UPON THE PLAT APPROVED FEBRUARY 11, 1939, SHOWING LOTTING OF FRACTIONAL AREA CREATED BY THE SEGREGATION OF THE UNPATENTED ETTIE B. LOSE CLAIM AND ETTIE B. MILL SITE, TO ACCOMMODATE APPLICATION TO PURCHASE SACRAMENTO 033554, PREPARED IN ACCORDANCE WITH INSTRUCTIONS CONTAINED IN THE COMMISSIONER'S LETTER "N" DATED SEPTEMBER 4, 1941, IS HEREBY APPROVED.

John A. Lewis
OFFICE CADASTRAL ENGINEER.

UNITED STATES
DEPARTMENT OF THE INTERIOR
GENERAL LAND OFFICE

WASHINGTON, D.C., SEPTEMBER 25, 1941.

THE AMENDED LOTTING REPRESENTED BY THIS SUPPLEMENTAL PLAT HAVING BEEN CORRECTLY MADE IN ACCORDANCE WITH THE REGULATIONS OF THIS OFFICE, THE PLAT IS HEREBY ACCEPTED.

Thomas C. Howell
ACTING ASSISTANT COMMISSIONER.

41 444

T5NR13E MD

9

CHAINS
0 20 40 60 80 120

BLM 348