

HPGN D CA 01 F6
N 2,293.776.97
E 6,186,170.00

BASIS OF BEARINGS
N 7° 36' 05" E - 398.67' - 15330.53'
S 30° 02' 47" W - 15330.53'

HPGN D CA 01 EF
N 2,272.431.06
E 6,162,532.29

DETAIL "A"
NOT TO SCALE

1954 O.R. 2233
M.C.R. 673, (SUPERSEDED)
M.C.R. 494, (SUPERSEDED)
2120 O.R. 2, (SUPERSEDED)
1607 O.R. 2, (SUPERSEDED)

LEGEND

- SET 1/2" IRON PIPE MARKED L.S. 4805.
- MONUMENT AS NOTED (NOT LOCATED THIS SURVEY).
- △ FOUND CALIFORNIA HPGN DENSIFICATION SURVEY MONUMENT AS DESCRIBED IN THE GEODETIC CONTROL DATA SHEET PUBLISHED IN 1994 BY THE DEPARTMENT OF COMMERCE FOR THE NATIONAL GEODETIC SURVEY.

RECORD INFORMATION

THE BEARINGS AND DISTANCES OF THIS SURVEY AGREE WITH REFERENCED RECORD DATA UNLESS SHOWN OTHERWISE.
RECORD DATA FROM:

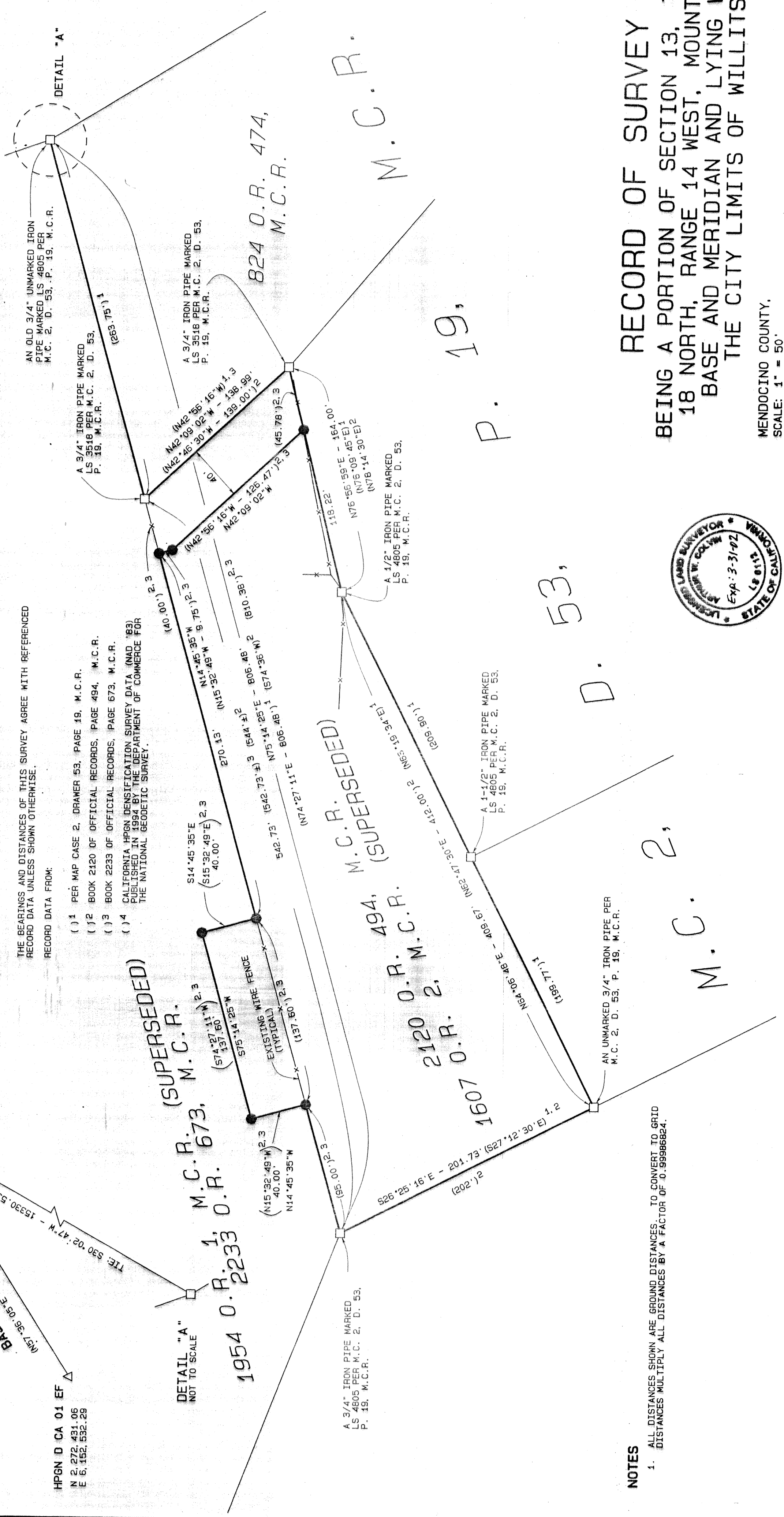
- (1) PER MAP CASE 2, DRAWER 53, PAGE 19, M.C.R.
- (2) BOOK 2120 OF OFFICIAL RECORDS, PAGE 494, M.C.R.
- (3) BOOK 2233 OF OFFICIAL RECORDS, PAGE 673, M.C.R.
- (4) CALIFORNIA HPGN DENSIFICATION SURVEY DATA (NAD '83) PUBLISHED IN 1994 BY THE DEPARTMENT OF COMMERCE FOR THE NATIONAL GEODETIC SURVEY.

BASIS OF BEARINGS

N57°36'05"E (CALCULATED) BETWEEN FOUND HPGN MONUMENTS "EF" AND "F6" BASED UPON THE CALIFORNIA COORDINATE SYSTEM NAD '83 ZONE 2. SEE DETAIL A.

COUNTY SURVEYOR'S NOTE

THIS MAP IS APPROVED FOR FILING PURSUANT TO CALIFORNIA GOVERNMENT CODE SECTION 66442(G) IN ACCORDANCE WITH CITY OF WILLITS APPROVED BOUNDARY LINE ADJUSTMENT #93-1.



NOTES

- 1. ALL DISTANCES SHOWN ARE GROUND DISTANCES. TO CONVERT TO GRID DISTANCES MULTIPLY ALL DISTANCES BY A FACTOR OF 0.99986824.

RECORD OF SURVEY

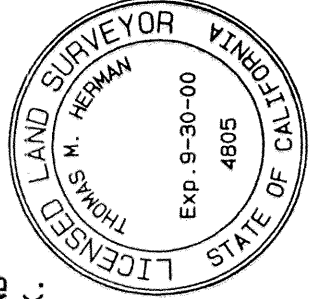
BEING A PORTION OF SECTION 13, TOWNSHIP 18 NORTH, RANGE 14 WEST, MOUNT DIABLO BASE AND MERIDIAN AND LYING WITHIN THE CITY LIMITS OF WILLITS

MENDOCINO COUNTY, CALIFORNIA
SCALE: 1" = 50'

SURVEYOR'S STATEMENT

THIS MAP CORRECTLY REPRESENTS A SURVEY MADE BY ME OR UNDER MY DIRECTION IN CONFORMANCE WITH THE REQUIREMENTS OF THE LAND SURVEYORS' ACT AT THE REQUEST OF JAMES F. KING AND JEAN K. KING IN JANUARY, 2000.

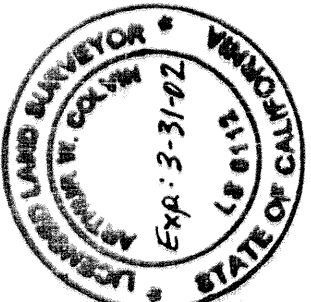
THOMAS M. HERMAN
P.L.S. 4805
LIC. EXP. DATE - 9/30/00



COUNTY SURVEYOR'S STATEMENT

THIS MAP HAS BEEN EXAMINED IN ACCORDANCE WITH SECTION 8766 OF THE LAND SURVEYORS' ACT THIS 6TH DAY OF JULY 2000.

STANLEY TOWNSEND
COUNTY SURVEYOR
BY: Arthur W. Colvin
ARTHUR W. COLVIN
DEPUTY COUNTY SURVEYOR
P.L.S. 6112
LIC. EXP. DATE 3/31/02



RECORDER'S STATEMENT

FILED THIS 7TH DAY OF JULY 2000 AT 9:26 A.M., IN MAPS, DRAWER 67, PAGE 69, M.C.R. AT THE REQUEST OF T. M. HERMAN & ASSOCIATES.

MARSHA A. WHARFF
COUNTY CLERK-RECORDER
FEE \$800
BY: Donna Locatelli
DEPUTY

#51

ONE SHEET ONLY

MAPS
DRAWER 67
PAGE 69

00105