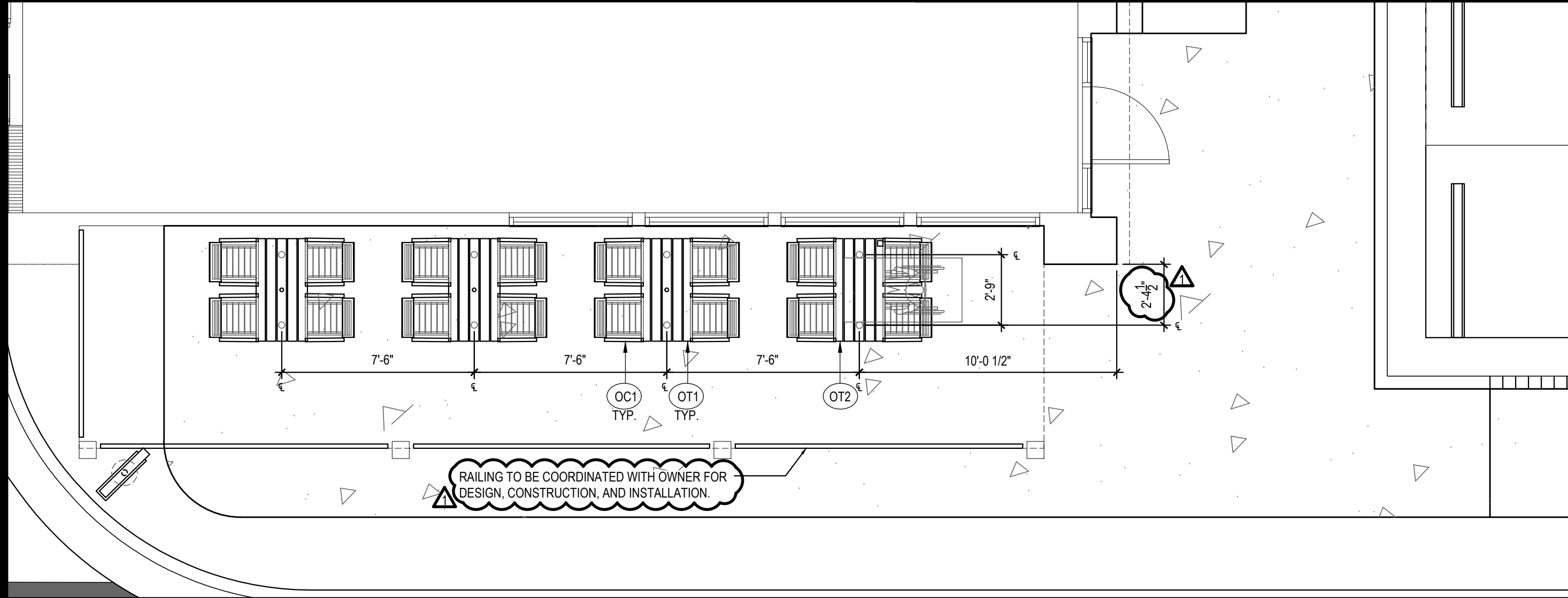


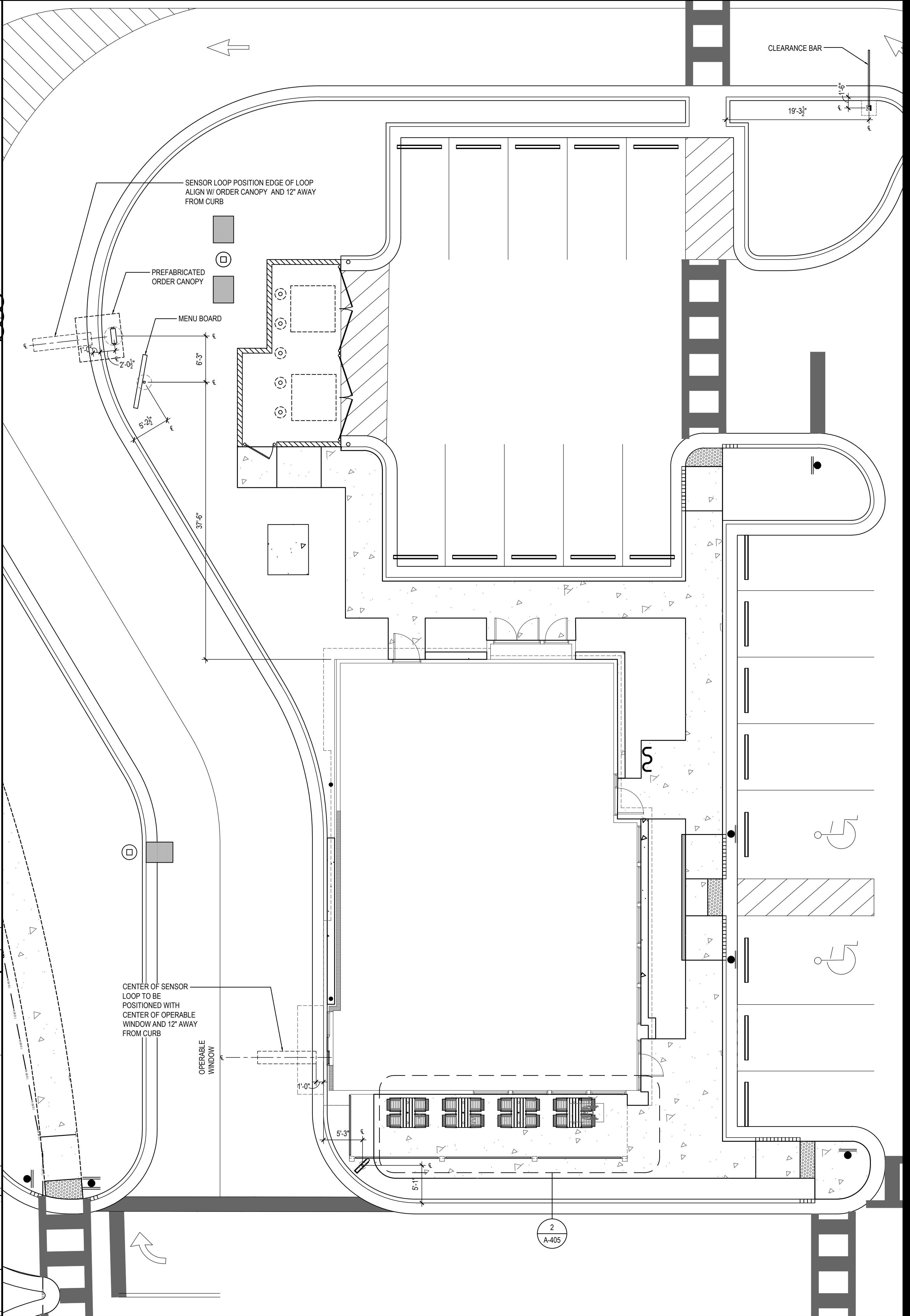
C2j2	PANDA COUNTER STOOL- NO BACK	OAK (PREFERRED STOOL)	PANDA VENDOR	22" H
C2g	PANDA COUNTER STOOL W/ BACK	OAK (OPTIONAL)	PANDA VENDOR	22" H
OUTDOOR FURNITURE & ARCH. ELEMENTS				
OC1	OUTDOOR CHAIR		PANDA VENDOR	22-7/8" x 22-1/2" x 35-3/8" / (17-3/8")
OT1	4 TOP OUTDOOR TABLE		PANDA VENDOR	48" x 24" x 30"
OT2	4 TOP OUTDOOR TABLE (ADA)		PANDA VENDOR	48" x 33" x 30"
OT3	2 TOP OUTDOOR TABLE		PANDA VENDOR	24" x 24" x 30"
OW1	OUTDOOR WASTE BIN		PANDA VENDOR	23" x 23-1/4" x 44-5/8"
OW2	OUTDOOR WASTE BIN	ALUMINUM	PANDA VENDOR	22-1/2" x 22-1/2" x 45"
F5a	UMBRELLA & BASE (7")	TOP: SUNBRELLA, CANVAS, JOCKEY RED POLE: ALUM. MARINE SATIN ANODIZED BASE: 24" DIA. 75LB GALV. STEEL BASE	TUUCI	7" HEX x 96" H
F5b	SINGLE POST PYRAMID UMBRELLA (12")	TOP: FABRIC TOP, PVC 502 FERRARI PRECONTRACTANT POLE: BLK. 5.0 GA. TRD TUBING BASE: 8" SQ. PLATE ON CONC. FOOTING. SEE DETAIL	USA SHADE	12' SQ. x 10' 5-12"/H



NOT USED 5
Scale= 1/8" = 1'-0" A-405



PATIO FURNITURE 2
Scale= 1/4" = 1'-0" A-405



DRIVE - THRU MENU BOARD LOCATION 1
Scale= 1/8" = 1'-0" A-405



PANDA RESTAURANT GROUP INC.
1683 Walnut Grove Ave.
Rosemead, California
91770
Telephone: 626.799.9898
Facsimile: 626.372.8288

All ideas, designs, arrangement and plans indicated or represented by this drawing are the property of Panda Express Inc. and were created for use on this specific project. None of these ideas, designs, arrangements or plans may be used by or disclosed to any person, firm, or corporation without the written permission of Panda Express Inc.

REVISIONS:
1 06.04.21 ISSUE FOR BID

ISSUE DATE:
1 04.29.2021 ISSUE FOR PERMIT
2 06.04.2021 ISSUE FOR BID

DRAWN BY: JDV

PANDA PROJECT #: - S8-22-D8135
C&P PROJECT #: - 2200775



2600 Maitland Center Pkwy, Maitland, FL 32751
P (407) 661-9100
F (407) 661-9101
www.cph.com
Florida Corporate Certificate #AA-C00026

06.04.2021

PANDA EXPRESS
TRUE WARM AND WELCOME 2300
SKYBROOKE BOULEVARD & STATE ROAD 54
LUTZ, FL 33558

A-405
ARCHITECTURAL DETAILS
DRIVE THRU

TRUE WARM & WELCOME 2300 R4